

R.P.O. Vol. 682 Fol. 359

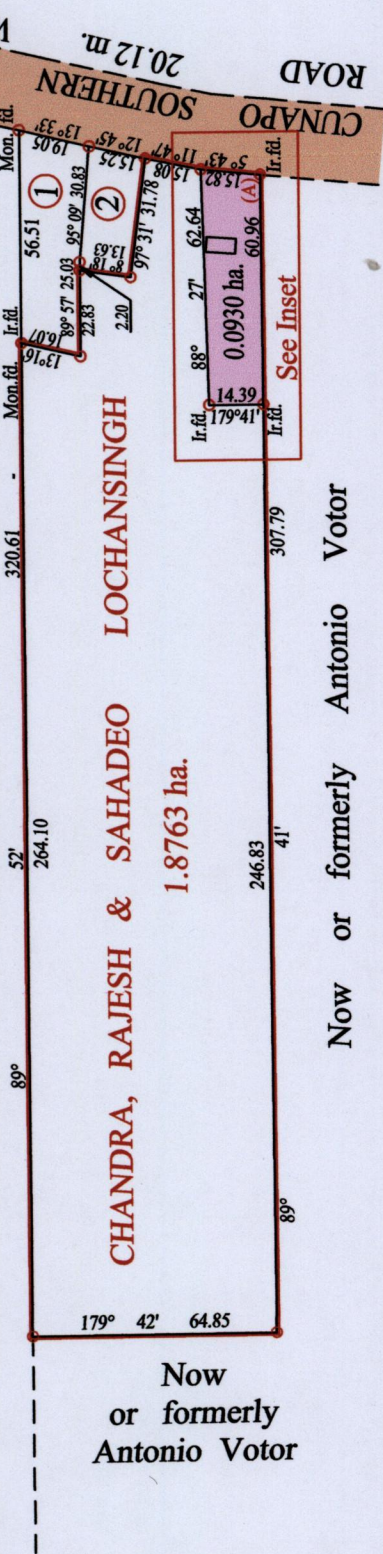
C.T. Vol. 3917 Fol. 221

Ward of Charuma

County of Nariva

Cadastral Sheet E.16.N. 45 E  
3/b

Now or formerly Oli Mohammed



Station (A)  
E 0699162  
N 1146061  
Reading taken with  
Handheld G.P.S.  
Garmin 765  
U.T.M. Zone 20  
Naparima  
±10m

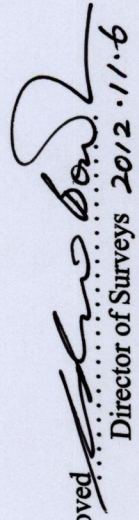
CHANDRA, RAJESH & SAHADEO LOCHANSINGH

1.8763 ha.

Now or formerly Antonio Votor

Now or formerly Antonio Votor

AREA	
①	= 0.0929 ha.
②	= 0.0469 ha.

Approved:   
Director of Surveys 2012.11.6

o Denotes Iron put except stated otherwise.

Note: Bearings are cassini grid based on solar observations Distances are in metres

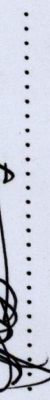
PLAN of a Parcel of land coloured pink in the Ward of Charuma

Containing zero point zero nine three zero hectare

Surveyed by me, with due authority, in December 2010

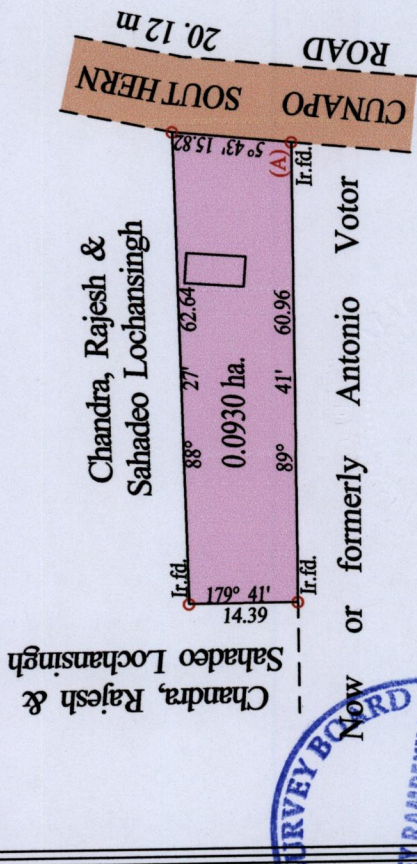
In accordance with Regulation 25 (1) of the Land Surveyors' Regulations 1998,

I certify that this plan is correct.

Checked by  M.M. 11/11/2012

Entered on ..... Trinidad & Tobago Land Surveyor ..... 09 ..... 2012

Inset (1:1000)

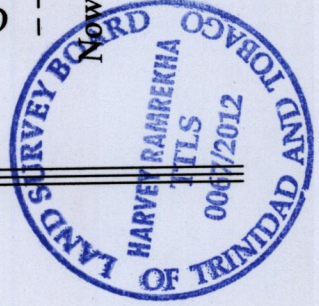


Chandra, Rajesh & Sahadeo Lochansingh

0.0930 ha.

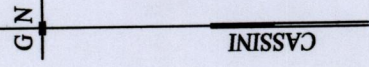
Now or formerly Antonio Votor

Now or formerly Antonio Votor



1433

147





1433/147