

1433

143

R.P.O. Vol. 447 Fol. 449

C.T. Vol. Fol.

PROCESS ID# 53153

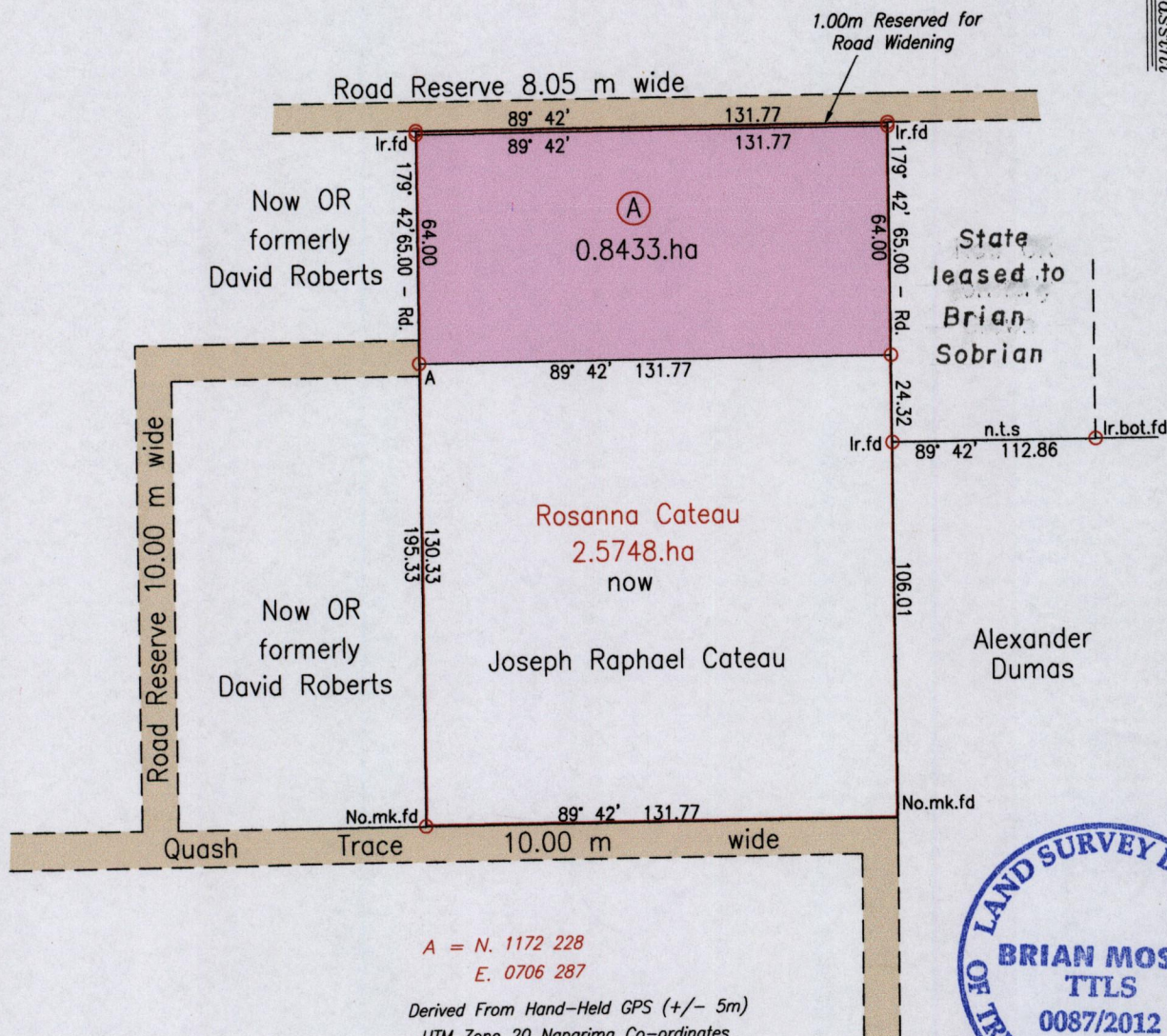
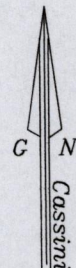
Cadastral Sheet 25F/2/a, C.22.J.

Ward of Turure

County of St Andrew

Vide
Bk 205:236
Bk 206:178
BK 1065.68

BK 1082:115



A = N. 1172 228
E. 0706 287

Derived From Hand-Held GPS (+/- 5m)
UTM Zone 20 Naparima Co-ordinates



Approved

[Signature]
 Director of Surveys 2012-10-31

SCALE 1:2000

Distances are in Metres

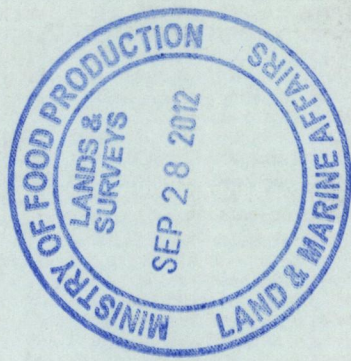
Bearings are Cassini Grid based on Solar Obs.
 ○ Denotes Iron Put unless otherwise stated
 Plan of a Parcel of land coloured pink in the ward of Turure
 Containing zero point eight four three three hectares
 Surveyed by me, with due authority, in March 2010 for *[Name]*
 In accordance with Regulation 25(1) of the Land Surveyors' Regulations 1998,
 I certify that this plan is correct.

Checked by *[Signature]* 30/10/2012

[Signature]

Entered on

Trinidad & Tobago Land Surveyor 26th Sept. 2012



1433/143