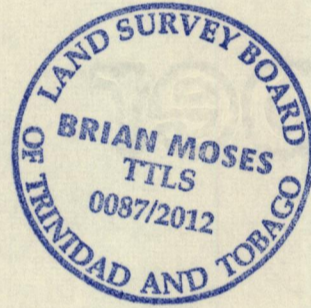
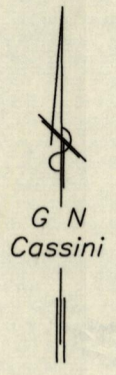
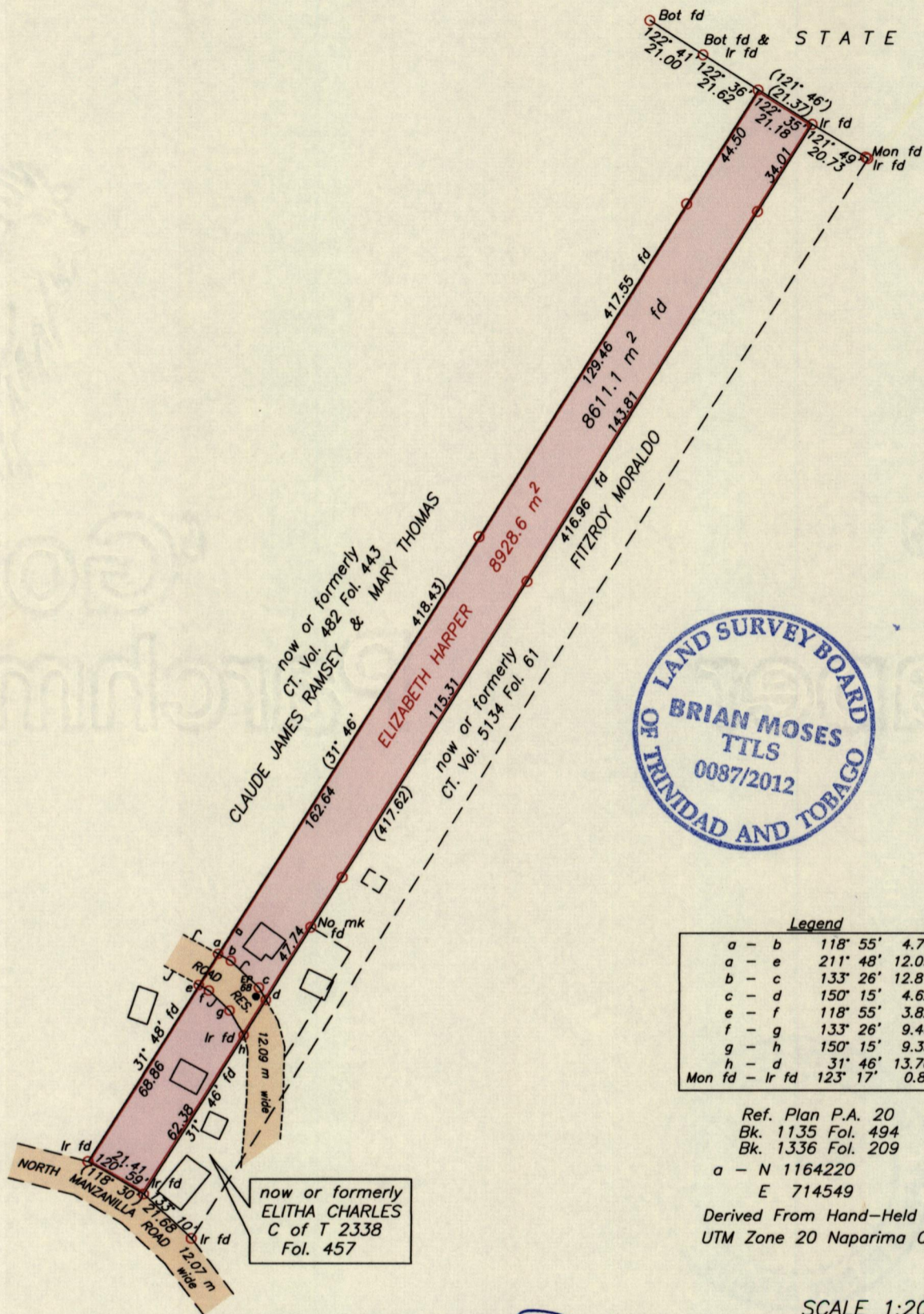


R.P.O. Vol. 28 Fol. 667  
C.T. Vol. Fol.

Cadastral Sheet E.8.C. 36B  
1/c  
Ward of Manzanilla  
County of St. Andrew

Vesting Order

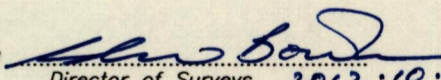


**Legend**

a - b	118° 55'	4.76
a - e	211° 48'	12.09
b - c	133° 26'	12.81
c - d	150° 15'	4.62
e - f	118° 55'	3.82
f - g	133° 26'	9.49
g - h	150° 15'	9.35
h - d	31° 46'	13.76
Mon fd - lr fd	123° 17'	0.84

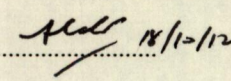
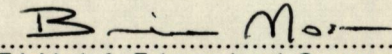
Ref. Plan P.A. 20  
Bk. 1135 Fol. 494  
Bk. 1336 Fol. 209  
a - N 1164220  
E 714549  
Derived From Hand-Held GPS (+/-5 m)  
UTM Zone 20 Naparima Co-ordinates

SCALE 1:2000  
Distances are in METRES

Approved   
Director of Surveys 2012.10.19

- Denotes Iron put unless otherwise stated
- Bearings are Cassini Grid based on Solar observations

PLAN of a Parcel of land coloured pink in the Ward of Manzanilla  
Containing eight six one one point one square metres  
Surveyed by me, with due authority, on 13th May 2010, 5th June, 2010 to be vested to Judith Greenaway  
& 2nd October, 2012  
In accordance with Regulation 25 (1) of the Land Surveyors' Regulations 1998,  
I certify that this Plan is correct.

Checked by  18/10/12  
Entered on .....  
  
Trinidad & Tobago Land Surveyor (T.T.L.S.)  
8<sup>th</sup> October ..... 2012



1433140