

R.P.O. Vol. 31 Fol. 439

C.T. Vol. 1560 Fol. 327

Cadastral Sheet B.24.C ^{24B}/_{2/d, 4/b}

Ward of Arima

County of St. George

Bk. 1196 Vol. 2

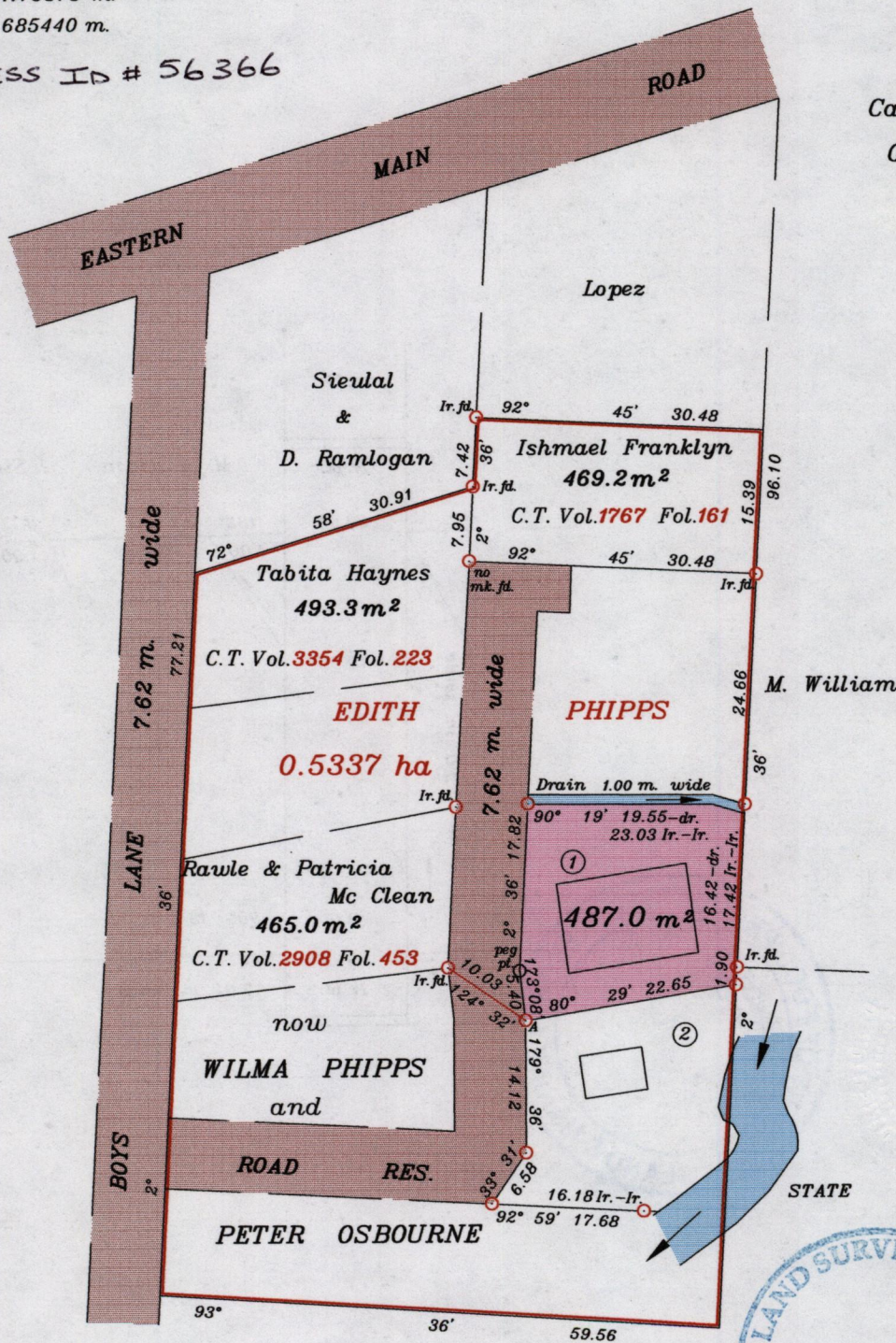
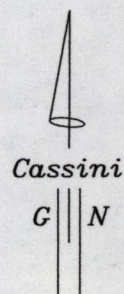
Fol. 117

U.T.M. co-ords. of A (+/-9m.)

N 1175373 m.

E 685440 m.

PROCESS ID # 56366



Edna Marshall

Approved by *[Signature]*
Director of Surveys 2012-10-15



Co-ordinates are U.T.M. 20. Wgs 84
obtained by hand-held G.P.S.

○ Denotes Ir.pt. except otherwise stated.
Bearings are based on Solar observations.

SCALE 1 : 750
Distances are in metres

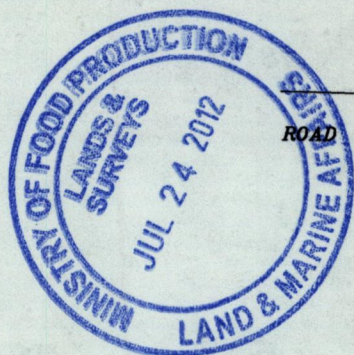
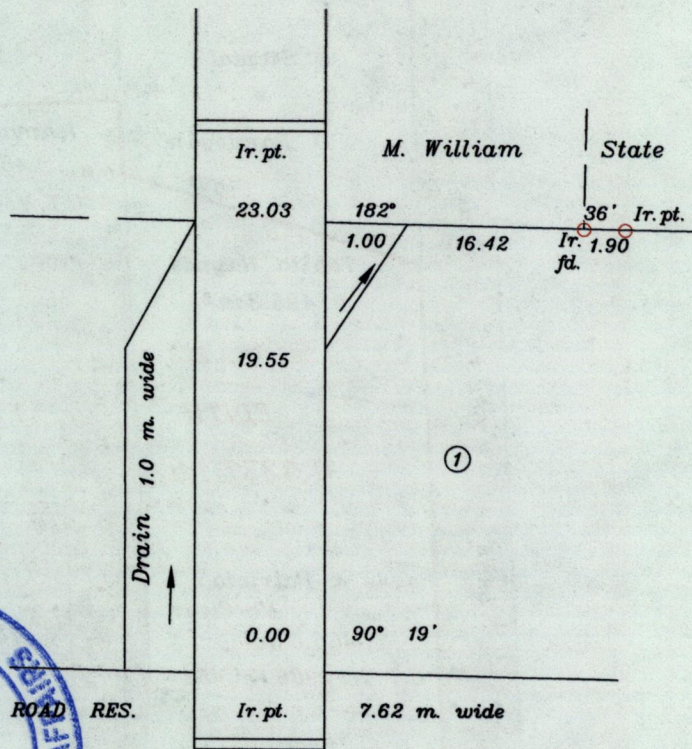
PLAN of a parcel of land coloured pink in the Ward of Arima
Containing Four hundred and eighty seven point zero sq.metres
Surveyed by me with due authority in November 1990.

In accordance with Reg. 25(1) of the Land Surveyors' Regulations 1998,

I certify that this plan is correct.

Checked by *[Signature]* 15/10/12
Entered on.....

Trinidad & Tobago *[Signature]*
Land Surveyor 20 7 2012.



1433/134