

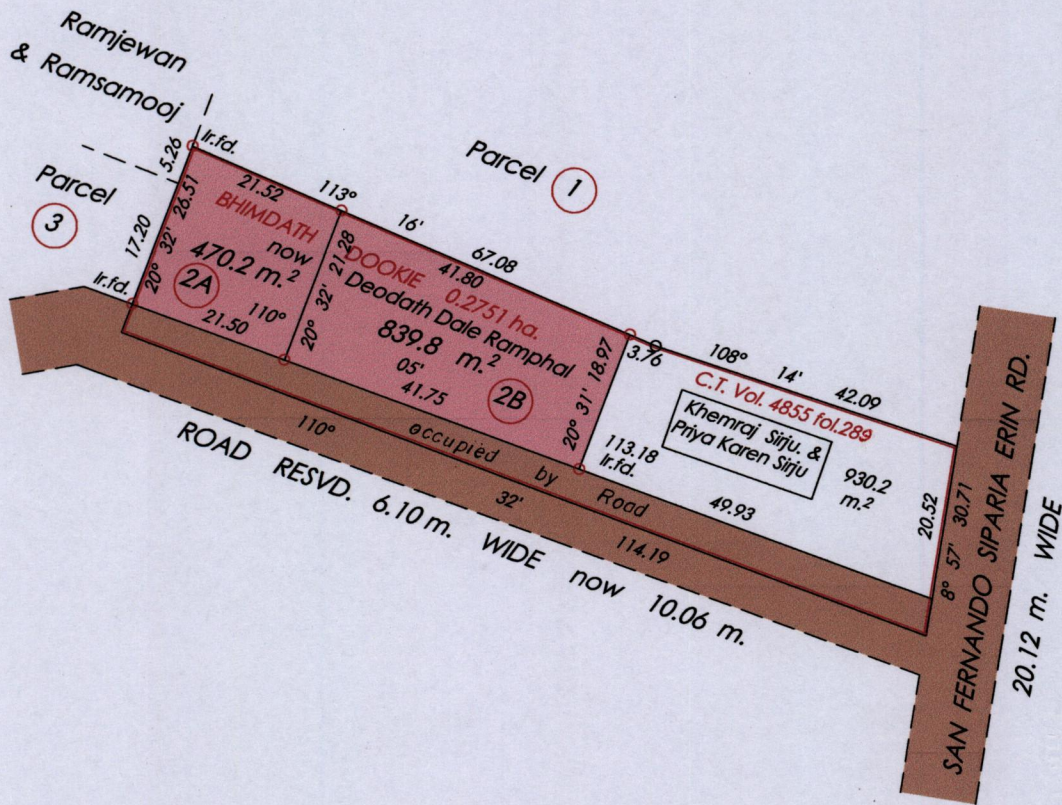
R.P.O. Vol. 35 fol. 573  
C.T. Vol. 3598 fol. 177

Ward of Naparima  
County of Victoria  
Cadastral Sheet G 8 N & G 13 B

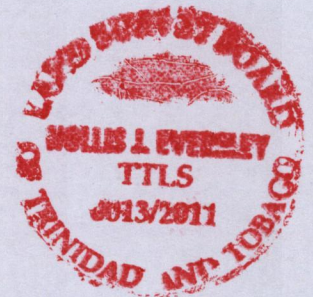
Bk. 1211 fol. 141

63 C  
3/c

PROCESS ID # 52319



Z = N. 1127757 E. 669811  
U.T.N. Zone 20 Naparima +/- 5.00 m  
Hand Held G.P.S.



Approved [Signature]  
Director of Surveys 2012.9.4

○ Denotes Iron Put Except  
Otherwise Stated

SCALE : 1 : 1000

Note: Bearings are cassini grid based on solar observations Distances are in metres

PLAN of 2 Parcels of land coloured pink in the Ward of Naparima  
Containing one thousand three hundred and ten sq. metres  
Surveyed by me, with due authority, in Jan. 2011

In accordance with Regulation 25 (1) of the Land Surveyors' Regulations 1998,  
I certify that this plan is correct.

Checked by [Signature]

[Signature]  
3<sup>rd</sup> April 2011

Entered on ..... Trinidad & Tobago Land Surveyor ..... 2011

