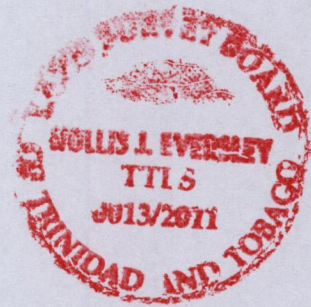
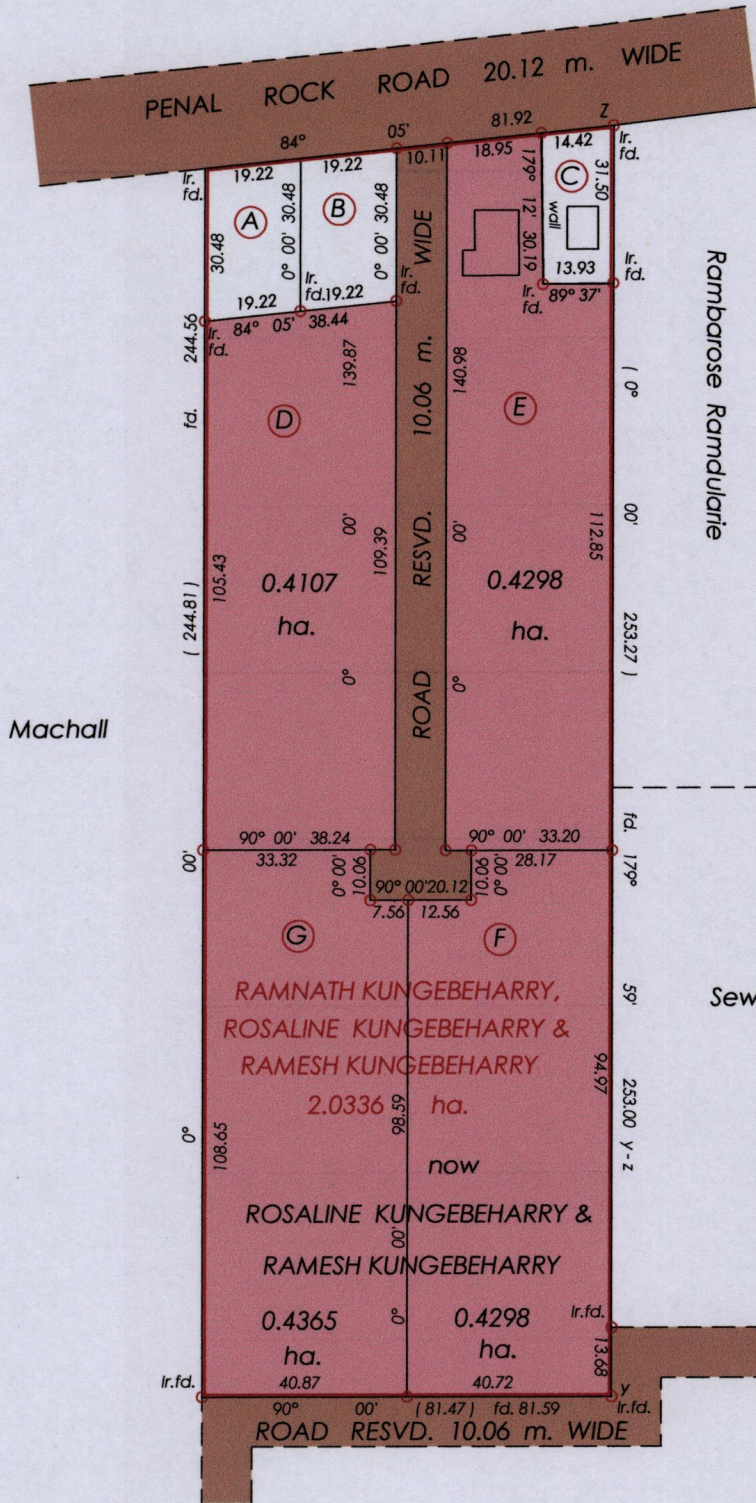


R.P.O. Vol. 145 fol. 391
 C.T. Vol. 2603 fol. 47
 Vol. 5532 fol. 181
 Bk. 397 fol. 291

Ward of Siparia
 County of St. Patrick
 Cadastral Sheet (G.18 H.) $\frac{73 C}{21 d}$

PROCESS ID # 57342



Parcel A = 582.7 m.²
 Parcel B = 582.7 m.²
 Parcel C = 435.6 m.²

Z = N. 1119861 E. 673392
 U.T.M. Zone 20 Naparima
 Hand Held G.P.S.

○ Denotes Iron Put Except Otherwise Stated

Approved *[Signature]*
 Director of Surveys 2012.10.11

SCALE : 1 : 1500

Note: Bearings are cassini grid based on solar observations Distances are in metres
 PLAN of 4 Parcels of land coloured pink in the Ward of Siparia
 Containing one point seven zero six eight hectares
 Surveyed by me, with due authority, in Sept. 2009
 In accordance with Regulation 25 (1) of the Land Surveyors' Regulations 1998,
 I certify that this plan is correct.

Checked by *[Signature]* 9/10/12

[Signature]

Entered on Trinidad & Tobago Land Surveyor 28th July 2011

LOT No.	CT. VOLUME & FOLIO	NAMES
D	5532 fol. 211	RAJEEV & RAMESH KUNGEBEHARRY
E	5532 fol. 213	RAJIN, SANDRA & RAMESH KUNGEBEHARRY
F	5532 fol. 209	RAJESH & RAMESH KUNGEBEHARRY
G	5532 fol. 207	RAVI & RAMESH KUNGEBEHARRY

