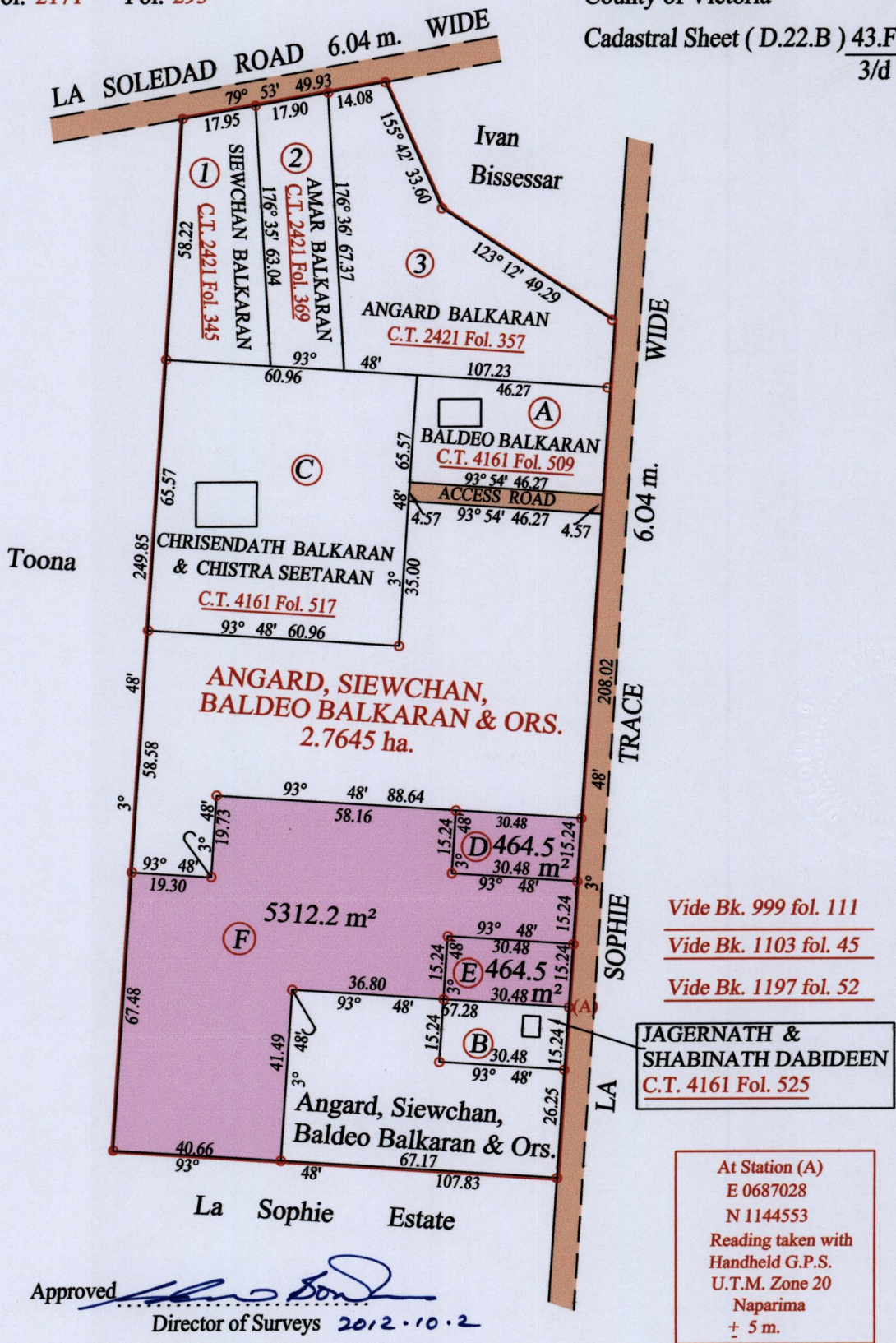
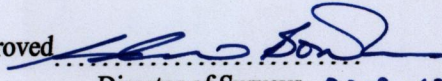


R.P.O. Vol. Fol.  
C.T. Vol. 2171 Fol. 293

Ward of Pointe - a - Pierre  
County of Victoria  
Cadastral Sheet ( D.22.B ) 43.F.  
3/d



Approved   
Director of Surveys 2012.10.2

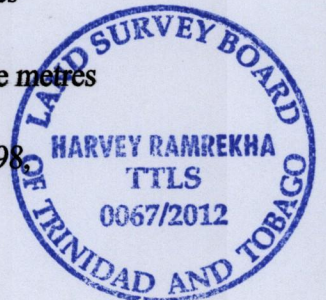
Denotes Iron put except stated otherwise.

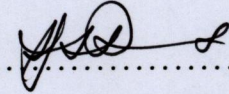
SCALE : 1:1500

Note: Bearings are cassini grid based on solar observations

Distances are in metres

PLAN of 3 Parcels of land coloured pink in the Ward of Pointe - a - Pierre  
Containing together six thousand two hundred and forty one point two square metres  
Surveyed by me, with due authority, in January 2008  
In accordance with Regulation 25 (1) of the Land Surveyors' Regulations 1998.  
I certify that this plan is correct.



Checked by  3/9/2012

Entered on ..... Trinidad & Tobago Land Surveyor ..... 2012

Faint, illegible text and markings, possibly bleed-through from the reverse side of the page.



1433/119