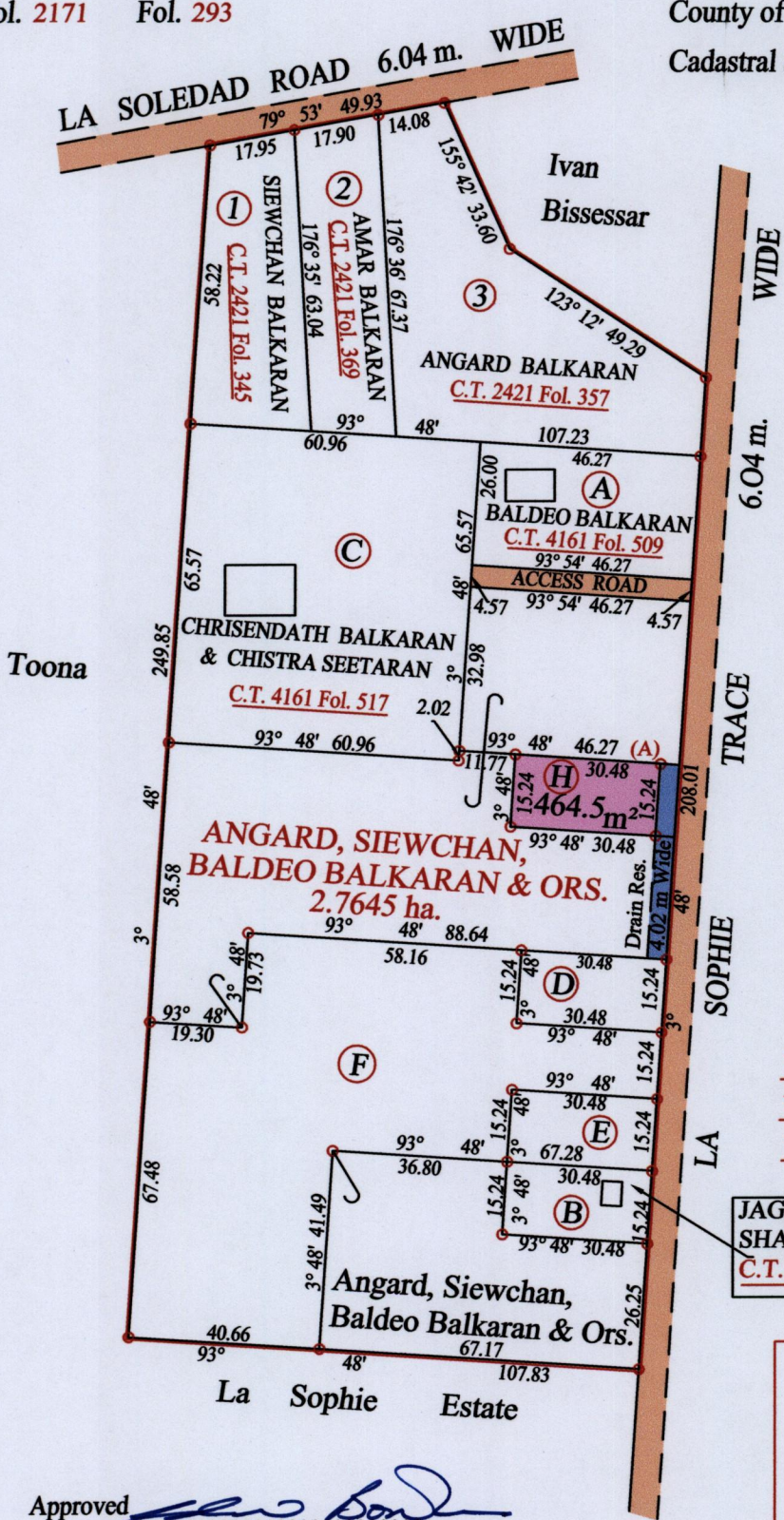


R.P.O. Vol. Fol.
C.T. Vol. 2171 Fol. 293

Ward of Pointe - a - Pierre
County of Victoria
Cadastral Sheet (D.22.B) 43.F.
3/d



Vide Bk. 999 fol. 111
 Vide Bk. 1103 fol. 45
 Vide Bk. 1197 fol. 52

JAGERNATH & SHABINATH DABIDEEN
 C.T. 4161 Fol. 525

At Station (A)
 E 0687033
 N 1144641
 Reading taken with
 Handheld G.P.S.
 U.T.M. Zone 20
 Naparima
 ± 5 m.

Approved *[Signature]*
 Director of Surveys 2012.10.2



SCALE : 1:1500

Denotes Iron put except stated otherwise.
 Note: Bearings are cassini grid based on solar observations Distances are in metres
 PLAN of a Parcel of land coloured pink in the Ward of Pointe - a - Pierre
 Containing four hundred and sixty four point five square metres
 Surveyed by me, with due authority, in May 2011
 In accordance with Regulation 25 (1) of the Land Surveyors' Regulations 1998,
 I certify that this plan is correct.

Checked by *[Signature]* *[Signature]*

Entered on Trinidad & Tobago Land Surveyor 2012

MINISTRY OF FOOD PRODUCTION
LANDS & SURVEYS
SEP 26 2012
LAND & MARINE AFFAIRS



1433/118