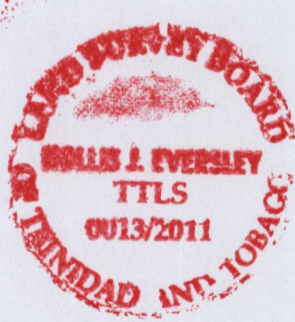
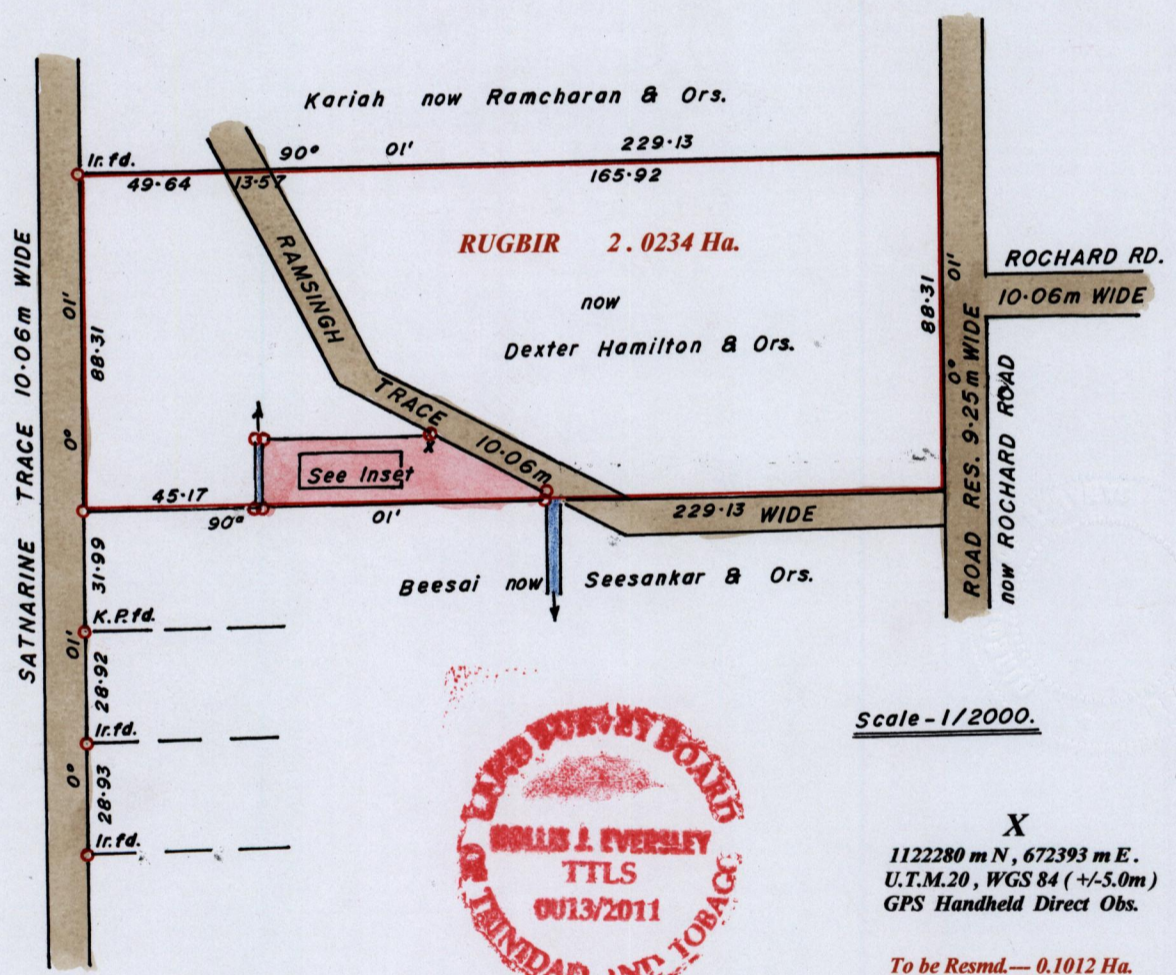
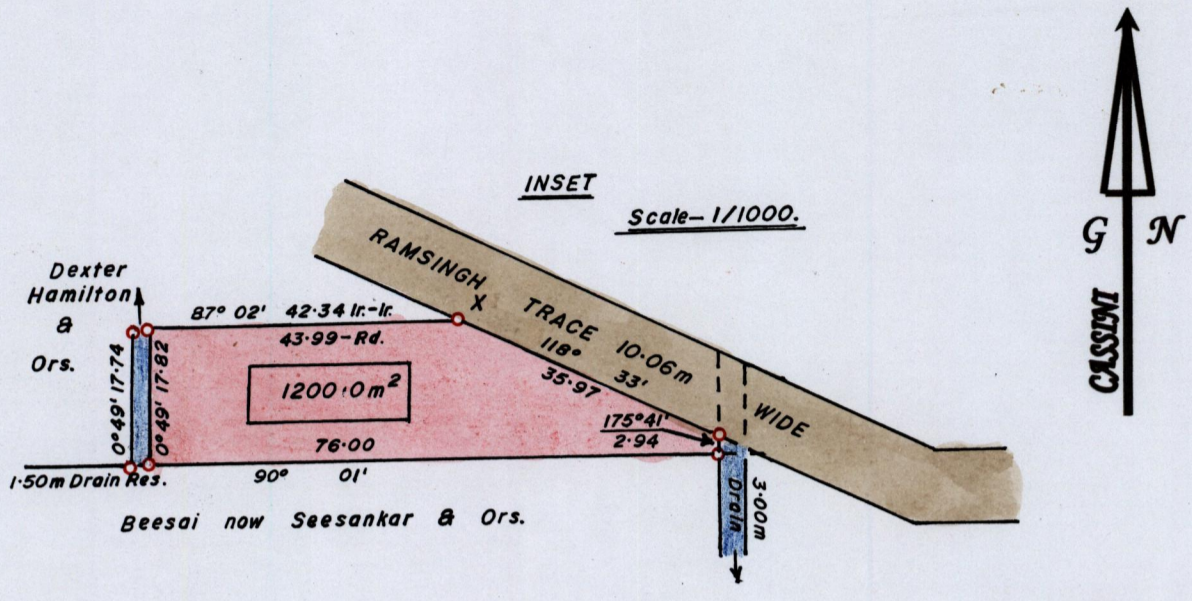


R.P.O Vol. 262 Fol. 543
C.T. Vol. Fol.
C.T. Vol. 5547 Fol. 125

Ward of Siparia.
County of St. Patrick.
Cadastral Sheet G.13.P. 63F
4/d



X
1122280 m N, 672393 m E.
U.T.M.20, WGS 84 (+/-5.0m)
GPS Handheld Direct Obs.

To be Resmd.— 0.1012 Ha.
To be Acqd.— 0.0254 Ha.
Bk. 754 : 54
Bk. 1103 : 136
Bk. 425 : 86.

SCALE 1 : 2000 & 1 : 1000.
Distances are in METRES

o Denotes Iron Put except otherwise stated
Bearings are Cassini Grid based on Solar Observations.

Approved
Director of Surveys. 2012.5.16

Note : To obtain compass bearings subtract 01 minutes.
PLAN of a Parcel of land coloured PINK in the Ward of Siparia.
Containing one thousand two hundred point zero square metres.
Surveyed by me, with due authority, in February 2007.
In accordance with Reg. 25(1) of the Land Surveyors' Regulations 1998,
I certify that this plan is correct.

Checked by HR-19/05/12

Entered

Trinidad and Tobago Land Surveyor. 21st December 2011.

| LOT # | C.T. Vol. Folio | Names |
|-------|-----------------|--------------------------|
| | 5547 Fol. 127 | Fyzool & Jassim Mohammed |



1433/11