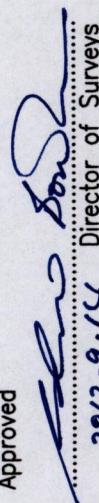


R.P.O. Vol. 6 Fol. 521  
 C.T. Vol. 2601 Fol. 525  
 C.T. Vol. 5562 Fol. 197  
 U.P.I.N. No.

Process ID # 56160

Approved  
  
 Director of Surveys  
 2012-9-14

A1	E	696055
	N	1170609

Reliability Error  $\pm$  5.0 m.  
 Coordinates are UTM, Naparima 1955 from  
 Garmin GPSmap 60CSx Handheld GPS Receiver

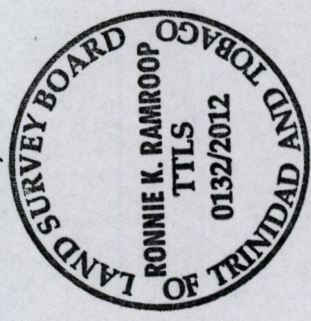
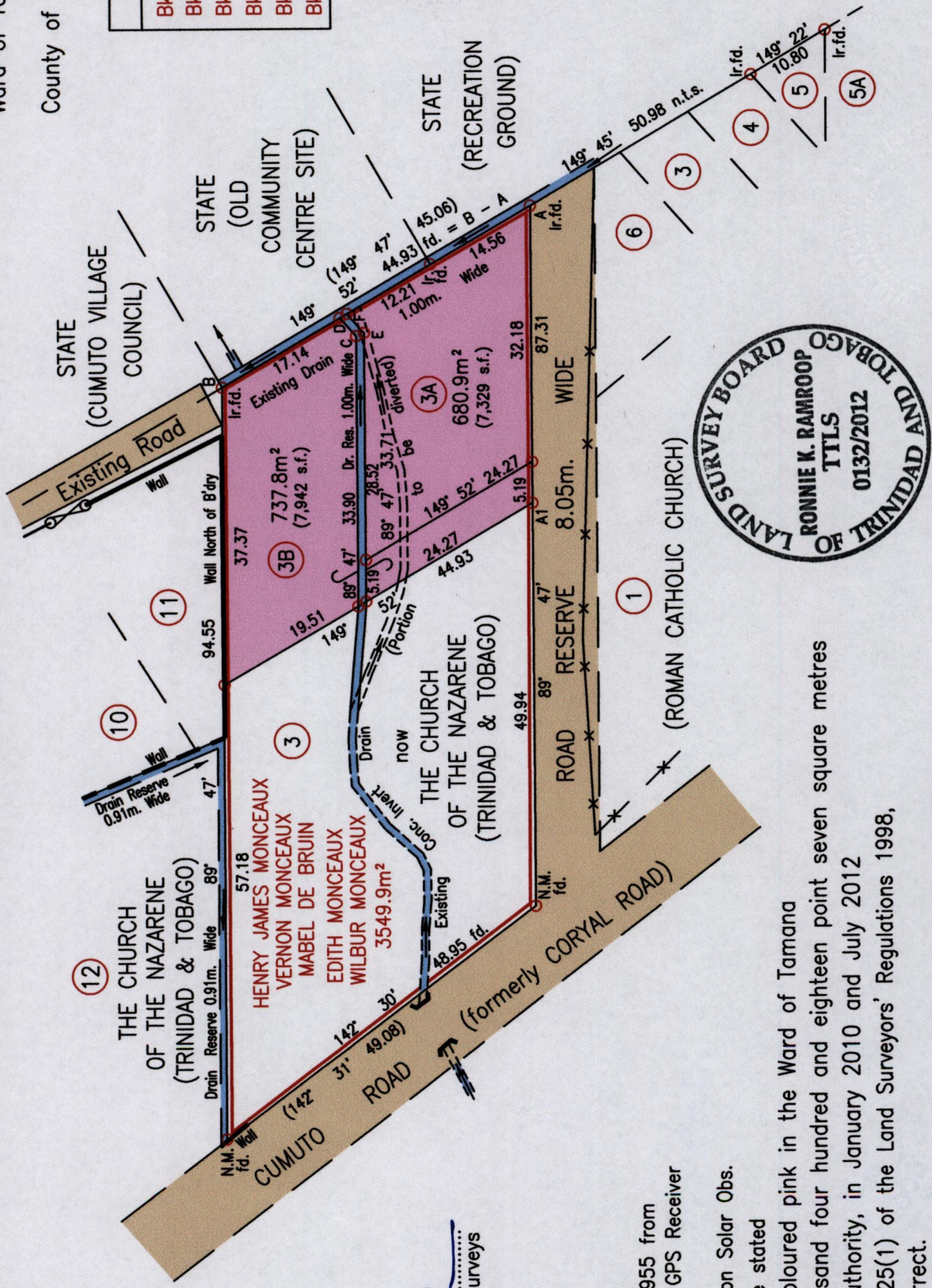
Bearings are Cassini Grid based on Solar Obs.  
 ○ Denotes Iron Put unless otherwise stated  
 Plan of 2 Parcels of land coloured pink in the Ward of Tamana  
 Containing together one thousand four hundred and eighteen point seven square metres  
 Surveyed by me, with due authority, in January 2010 and July 2012  
 In accordance with Regulation 25(1) of the Land Surveyors' Regulations 1998,  
 I certify that this plan is correct.

Checked by *W. H. H. H.* 2/19/12  
 Entered on .....

"L.P. No. 114 CUMUTO ROAD, CUMUTO"

Cadastral Sheet  $\frac{25D}{2/d}$ , C.21.M.  
 Ward of Tamana  
 County of St. Andrew

Vide
Bk 166:50
Bk 937:126
Bk 987:53
Bk 1065:40
Bk 1118:155
Bk 1175:58



Trinidad & Tobago Land Surveyor ..... 12<sup>th</sup> July ..... 2012

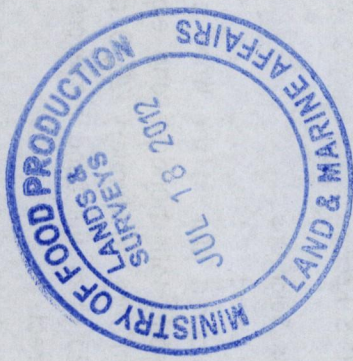
1433

105

Grid North  
 Cassini

LINE	BEARING	DIST.
C - D	47° 49'	3.08
E - F	47° 49'	3.25
D - F	149° 52'	1.02

SCALE 1:750  
 Distances are in Metres  
 \*---\* Denotes chain link wire fence



DN 115-26	AS 2
BY 115-26	
BY 115-26	
BY 115-26	
BY 115-26	
BY 115-26	

1433/105