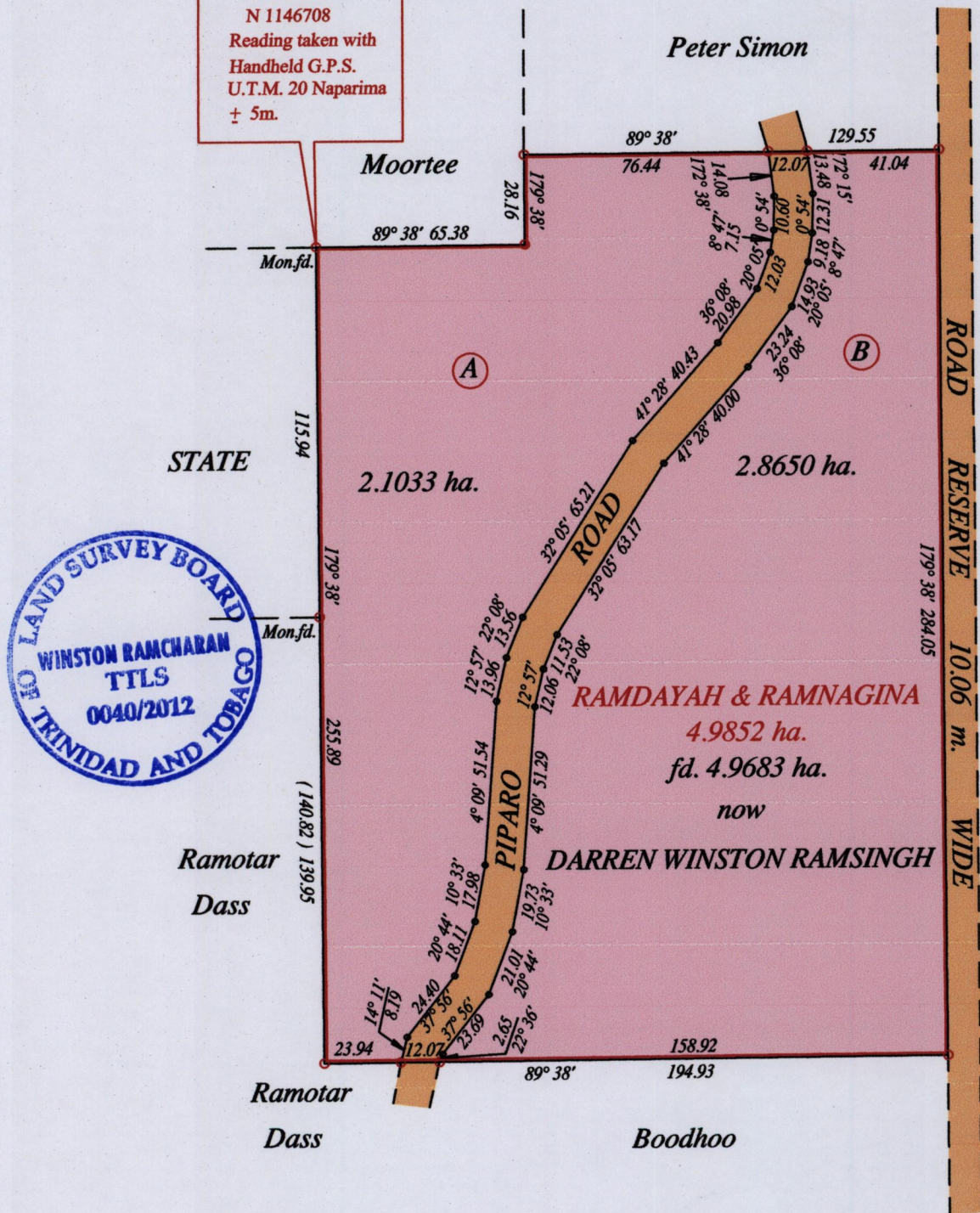


E 0683205  
N 1146708  
Reading taken with  
Handheld G.P.S.  
U.T.M. 20 Naparima  
± 5m.



Approved *[Signature]*  
Director of Surveys 2012.9.14

Vide Bk. 270 fol. 205 & 211

Vide Bk. 275 fol. 74

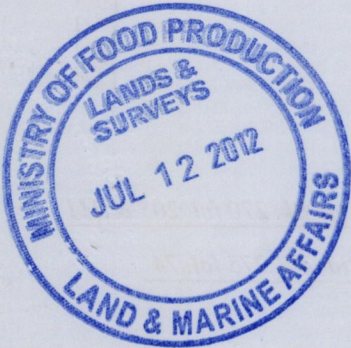
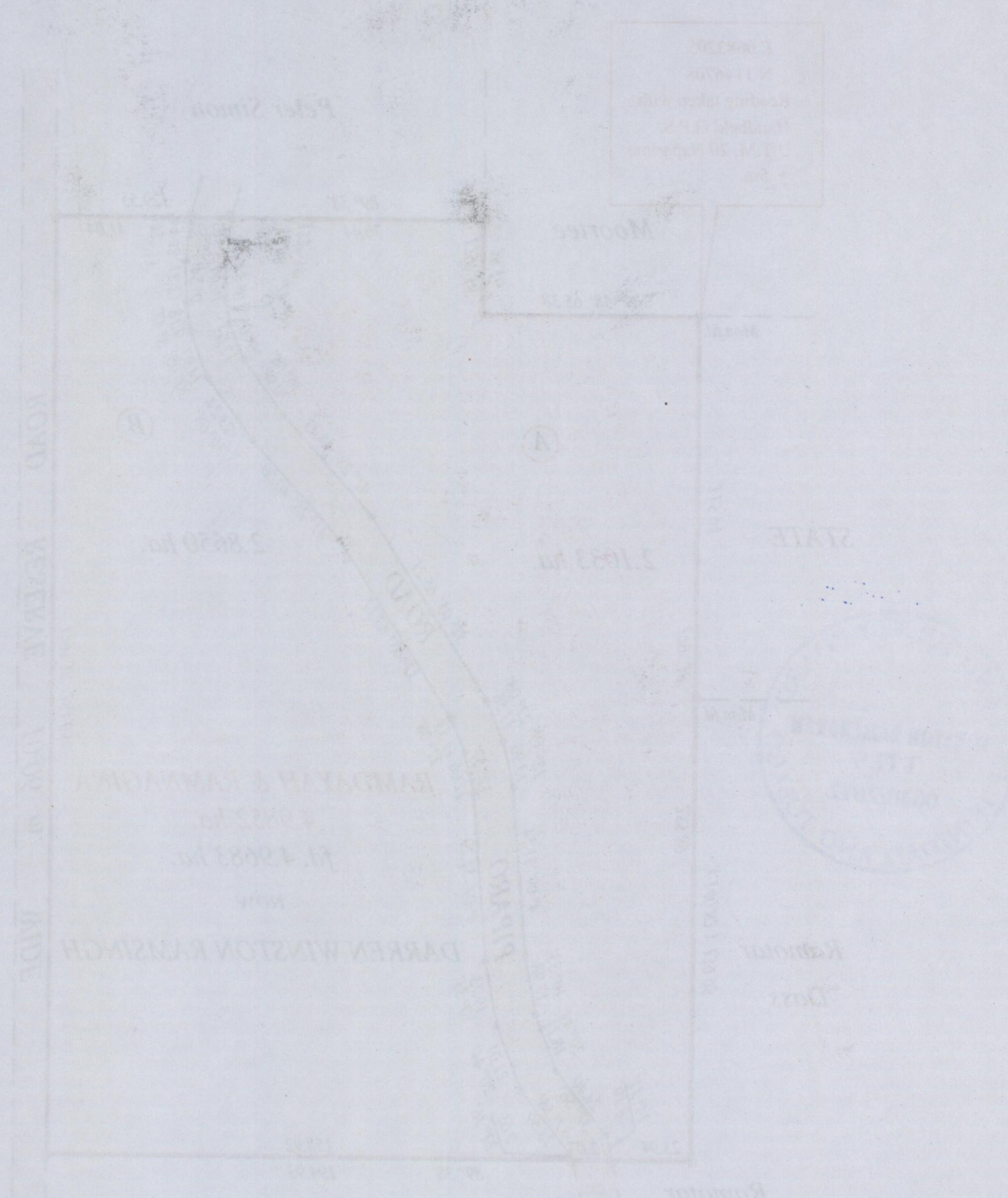
- Denotes no mark put
- Denotes Iron put except stated otherwise.

SCALE : 1:2000

Note: Bearings are U.T.M. grid based on solar observations Distances are in metres  
 PLAN of 2 Parcels of land coloured pink in the Ward of Pointe-a-Pierre  
 Containing together four point nine six eight three hectares  
 Surveyed by me, with due authority, in June 2010  
 In accordance with Regulation 25 (1) of the Land Surveyors' Regulations 1998,  
 I certify that this plan is correct.

Checked by *[Signature]* Winston Ramcharan

Entered on ..... Trinidad & Tobago Land Surveyor 10<sup>th</sup> July... 2012



Scale: 1:2000  
Note: Bearings are B.T.M. grid based on solar observations  
PLAN of 2 parcels of land coloured pink in the Ward of Pointe-a-Pitre  
Containing together four point nine six eight three hectares  
surveyed by me, with the authority, in June 2010  
In accordance with Regulation 25 (1) of the Land Surveyors' Regulation 1998  
I certify that this plan is correct  
Entered on  
Printed & Published by Land Surveyors  
2011

201/3341