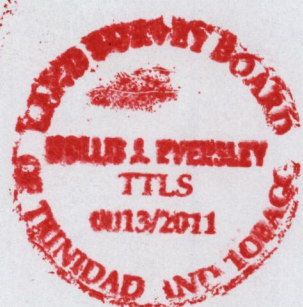
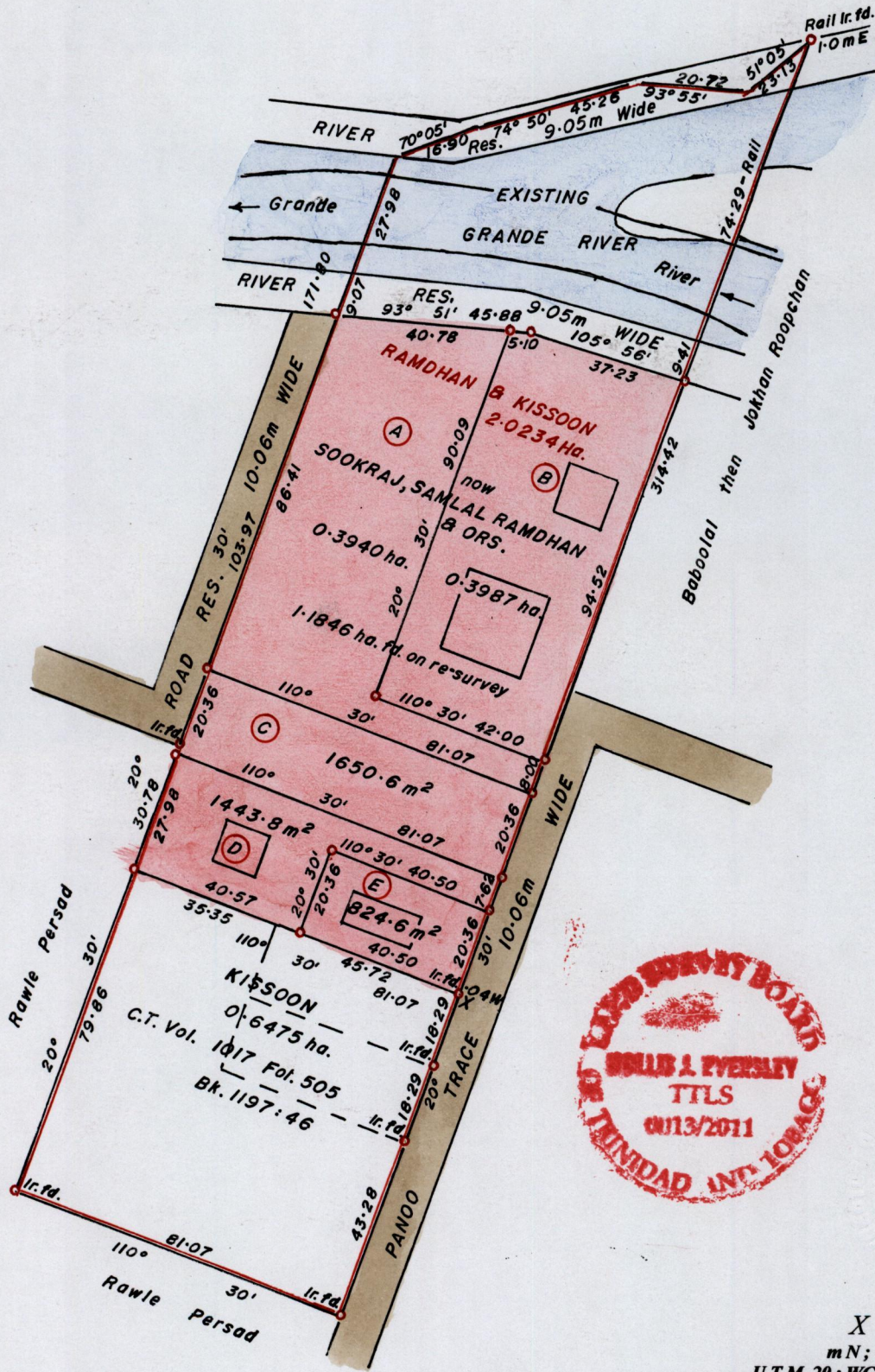


R.P.O Vol. 91 Fol. 519
C.T. Vol. 707 Fol. 335

Ward of Naparima.
County of Victoria.
Cadastral Sheet G.13.G. 63F
2/c

PROCESS ID # 47210



X
m N; m E.
U.T.M. 20; WGS 84 (+/-5.0m)
GPS Handheld Direct Obs.

Bk. 391 : 20.
Bk. 834 : 135.

SCALE 1 : 1500.

Distances are in METRES

o Denotes Iron Put except otherwise stated
Bearings are Cassini Grid based on Solar Observations.

Note : To obtain compass Bearing add/subtract 00 minutes.

Approved.....
Director of Surveys. 2012-8-28

PLAN of 5 Parcels of land coloured PINK in the Ward of Naparima.
Containing together one point one eight four six hectares.
Surveyed by me, with due authority, in February 2006.
In accordance with Reg. 25(1) of the Land Surveyors' Regulations 1998,
I certify that this plan is correct.

Checked by.....

.....

Entered.....

Trinidad and Tobago Land Surveyor..... 21..... 2011.

Faint header text at the top of the page, possibly containing document identification numbers.



Faint, illegible text or markings in the lower-left quadrant of the page, possibly a signature or handwritten notes.



1433/101