

R.P.O Vol. 98 Fol. 327  
C.T. Vol. 3193 Fol. 129

Coordinates

Iron fd. C: N 1124024.3  
E 664779.2

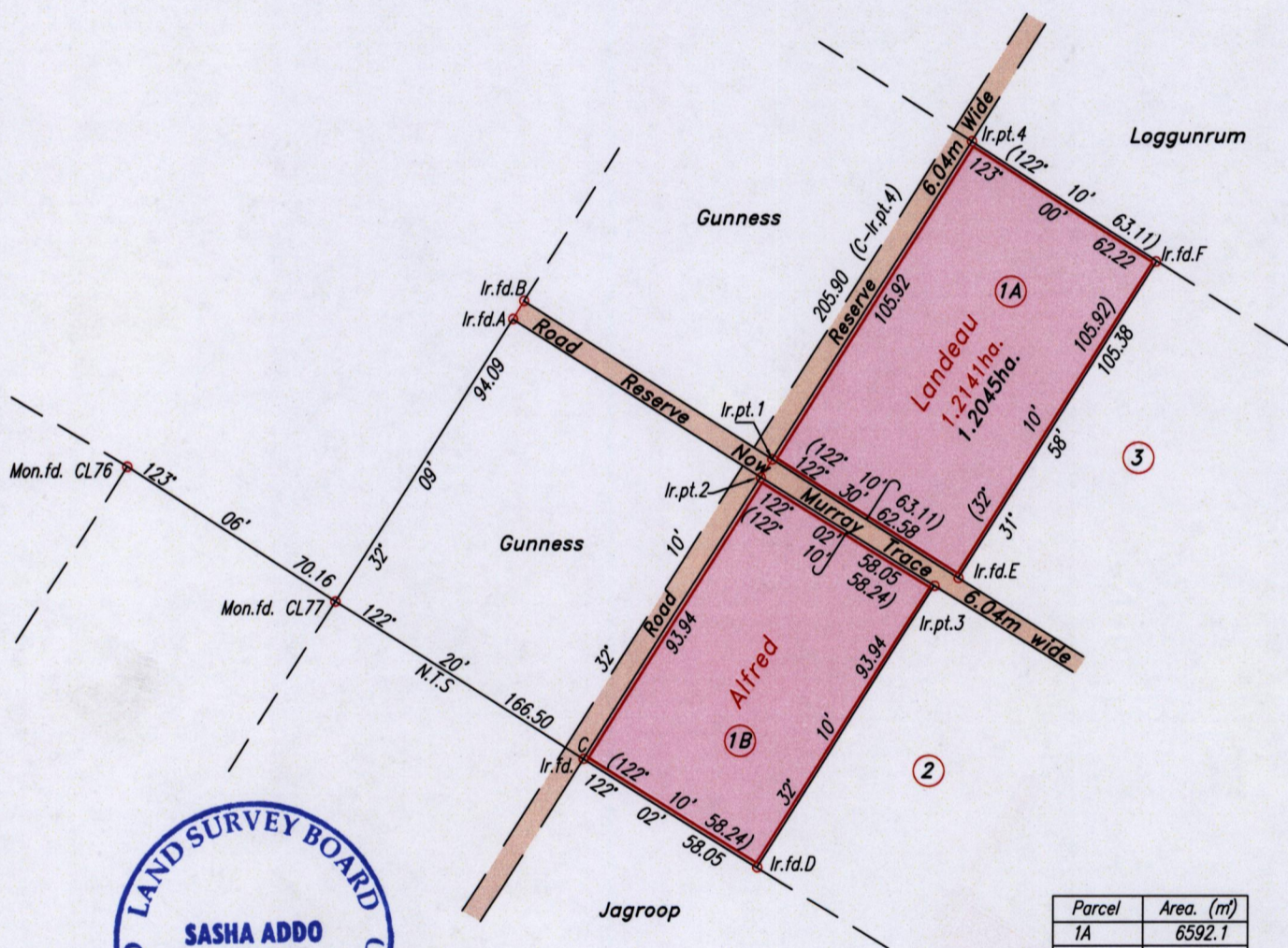
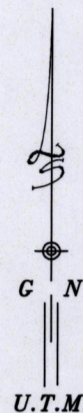
Error Statement : ±4m

Datum Definition : U.T.M. Zone 20 Naparima

Source : Magellan Hand Held GPS

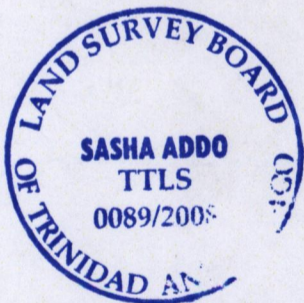
Ward of Siparia  
County of ST. Patrick  
Cadastral Sheet G.12.K 63 E  
3/a&b

Parcel Address: Murray Trace,  
Siparia



Parcel	Area. (m <sup>2</sup> )
1A	6592.1
1B	5453.2

Ir.fd.A - Ir.fd.B 32° 10' 6.04  
Ir.pt.1 - Ir.pt.2 32° 10' 6.04



Approved.....  
Director of Surveys  
2008-10-15

SCALE 1:2000

○ Denotes Iron put except otherwise stated.

Note: Bearings are utm grid based on solar observations.

Distances are in metres.

Plan of two Parcels of land coloured pink in the Ward of Siparia

Containing together one point two zero four five hectares

Surveyed by me, with due authority, in July 2008

In accordance with Regulation 25(1) of the Land Surveyors' Regulations 1998,  
I certify that this plan is correct.

Checked by.....  
13/10/08

.....  
Trinidad & Tobago Land Surveyor 13/10/2008.