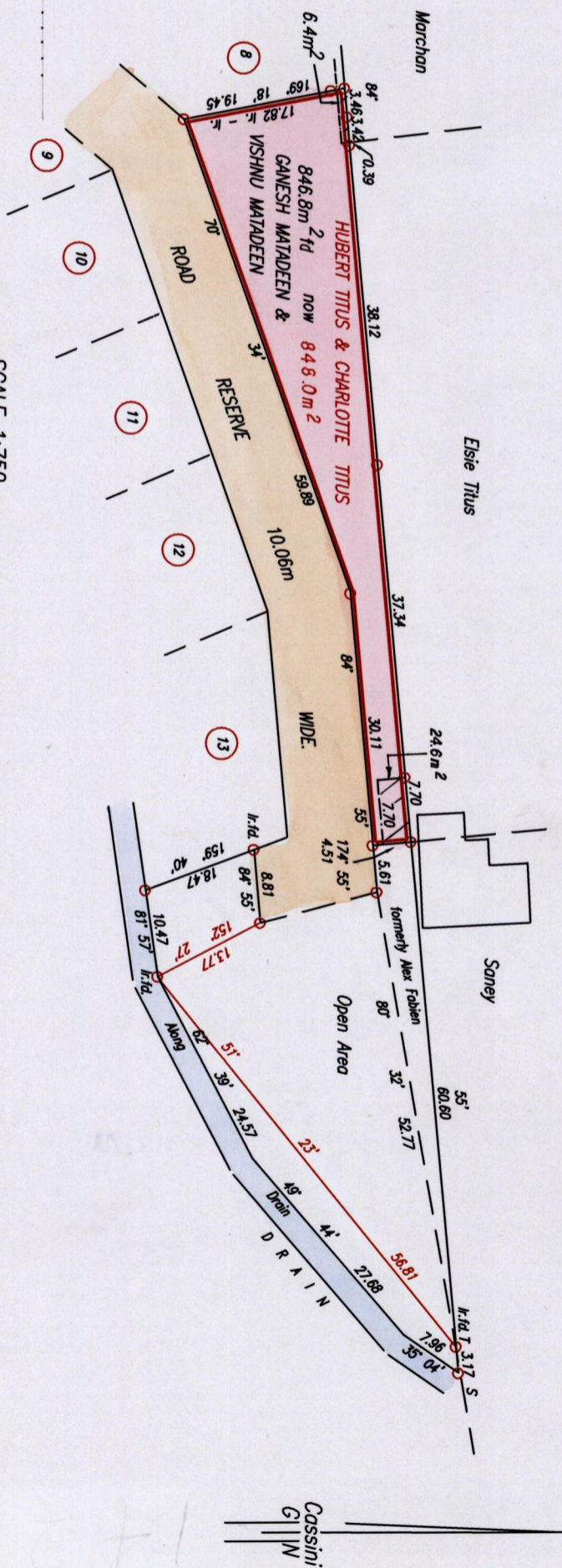


Wide Plan FA 17
RC 63

Cadastral Sheet G.12.N & O. 73A
Ward of Siparia
County of St.Patrick



Approved

Director of Surveys

2008 10 24

○ Denotes Iron put except otherwise stated.

Bearings are Cassini Grid based on Solar Observations.

Plan of a Parcel of land coloured pink in the Ward of Siparia

Containing eight hundred and forty six point eight square metres.

Surveyed by me, with due authority, in May, 2006

In accordance with Regulation 25(1) of the Land Surveyors' Regulations 1998,

I certify that this plan is correct.

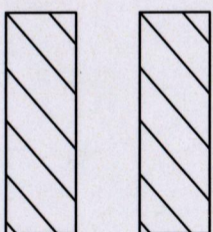
Checked by...

Handwritten signature

Entered ... Trinidad & Tobago Land Surveyor ... 2007

SCALE 1:750

Distances are in Metres



Western Encroachment by Marchan 6.4m²

Eastern Encroachment by Soney 24.6m²

Cassini
Grid