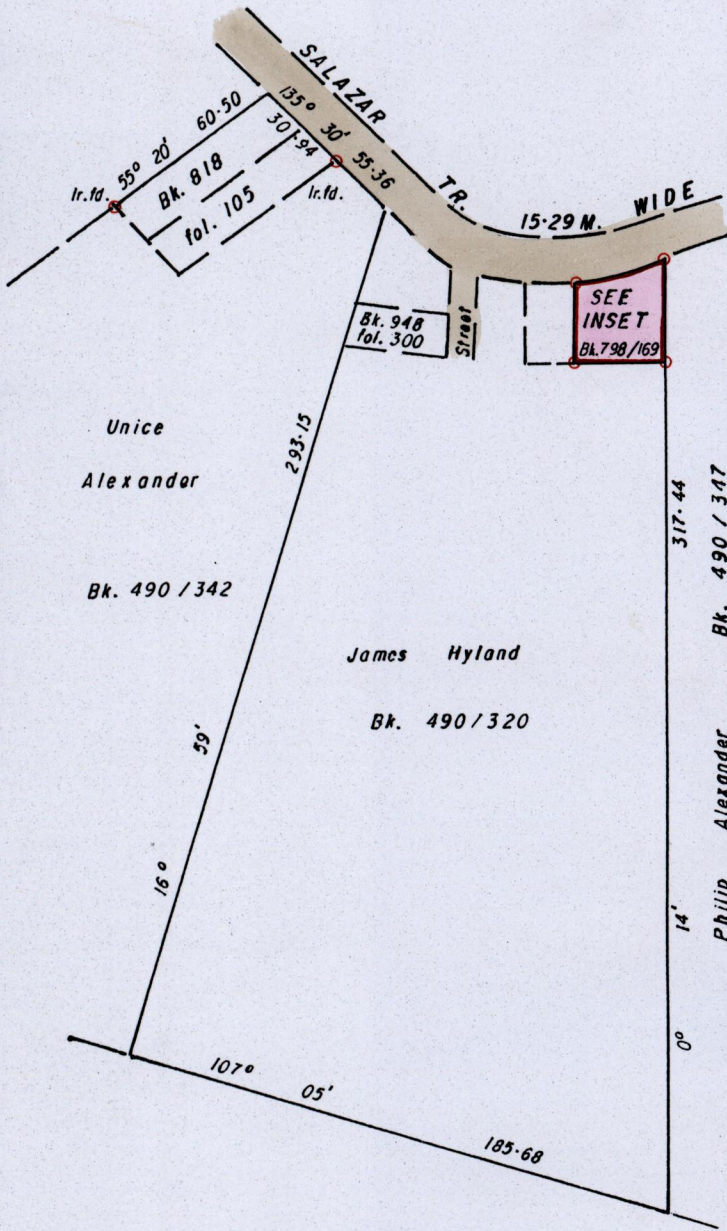


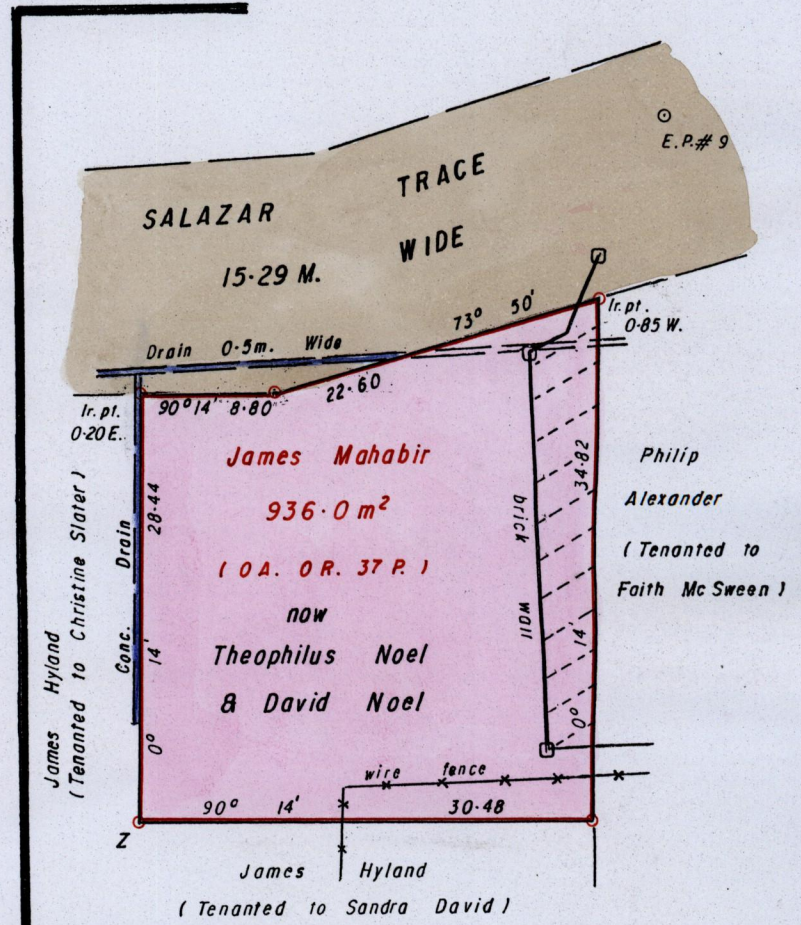
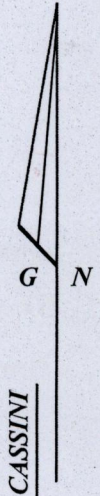
R.P.O. Vol. 420 Fol. 537
C.T. Vol. 964 Fol. 173

Ward of La Brea
County of St. Patrick
Cadastral Sheet 62D, F.15.M.
4/d


Ref. Bk. 798/169



LOCATION
Scale 1 / 2500



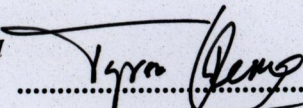
INSET

 Encroachment by Faith Mc Sween

Coordinates obtained by Hand Held G.P.S.
Point Z (W.G.S. 84, Zone 20)
Accuracy ± 5 m.
E. 0645606
N. 1122396

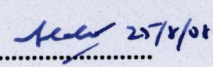
○ Denotes Iron put unless otherwise stated
Bearings are Cassini Grid based on Solar Obs.
SCALE 1 / 500 (INSET)
Distances are in METRES

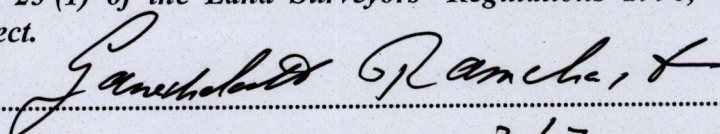


Approved 
Director of Surveys
2008.10.09

Note: To Obtain compass bearings add/subtract minutes

PLAN of a Parcel of land coloured PINK in the Ward of La Brea
Containing nine hundred and thirty six point zero square metres
Surveyed by me, with due authority, in May 2008 for Theophilus Noel
In accordance with Regulation 25 (1) of the Land Surveyors' Regulations 1998,
I certify that this plan is correct.

Checked by  25/11/08

Entered 
Trinidad and Tobago Land Surveyor..... 317 2008