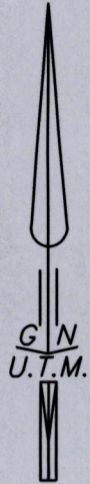
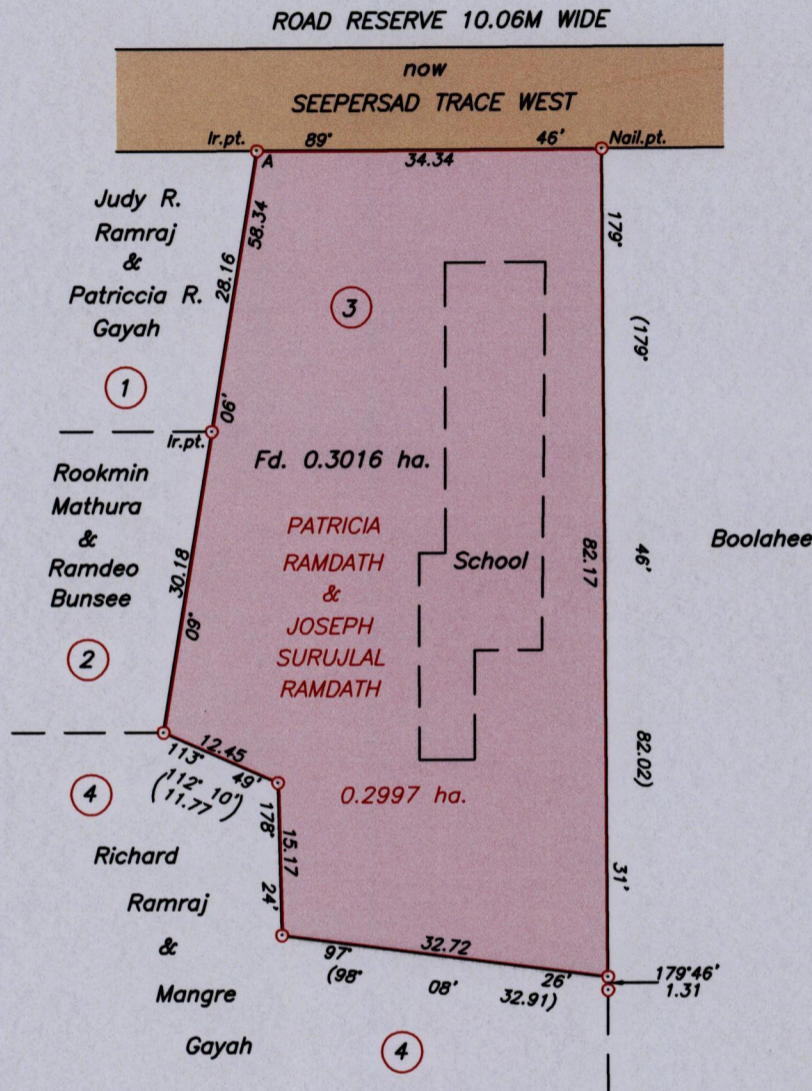


R.P.O. Vol.164
C.T. Vol. 4297

Fol.149
Fol.221

Cadastral Sheet G.12.H. $\frac{63E}{2/c \& 2/d}$
Ward of Siparia
County of St. Patrick
Bk.1128 Fol.217

TULSA TRACE HINDU SCHOOL



Approved *[Signature]*
Director of Surveys
2008.10.02

Co-ordinates obtained by Hand Held G.P.S. (WGS84 U.T.M. Zone 20)
Point A
Accuracy ± 6m
E 666983.00m
N 1126149.00m

SCALE 1:750
Distances are in metres

Note: To obtain cassini bearings + 18 minutes
○ Denotes Iron found except otherwise stated
Bearings are U.T.M. based on Solar Observations
Plan of a Parcel of land coloured pink in the Ward of Siparia
Containing zero point three zero one six hectares
Surveyed by me, with due authority, on 18th December 2007
In accordance with Regulation 25 (1) of the Land Surveyors' Regulations 1998,
I certify that this plan is correct.



Entered on *[Signature]*
Checked by *[Signature]* 15/8
Trinidad & Tobago Land Surveyor 2008