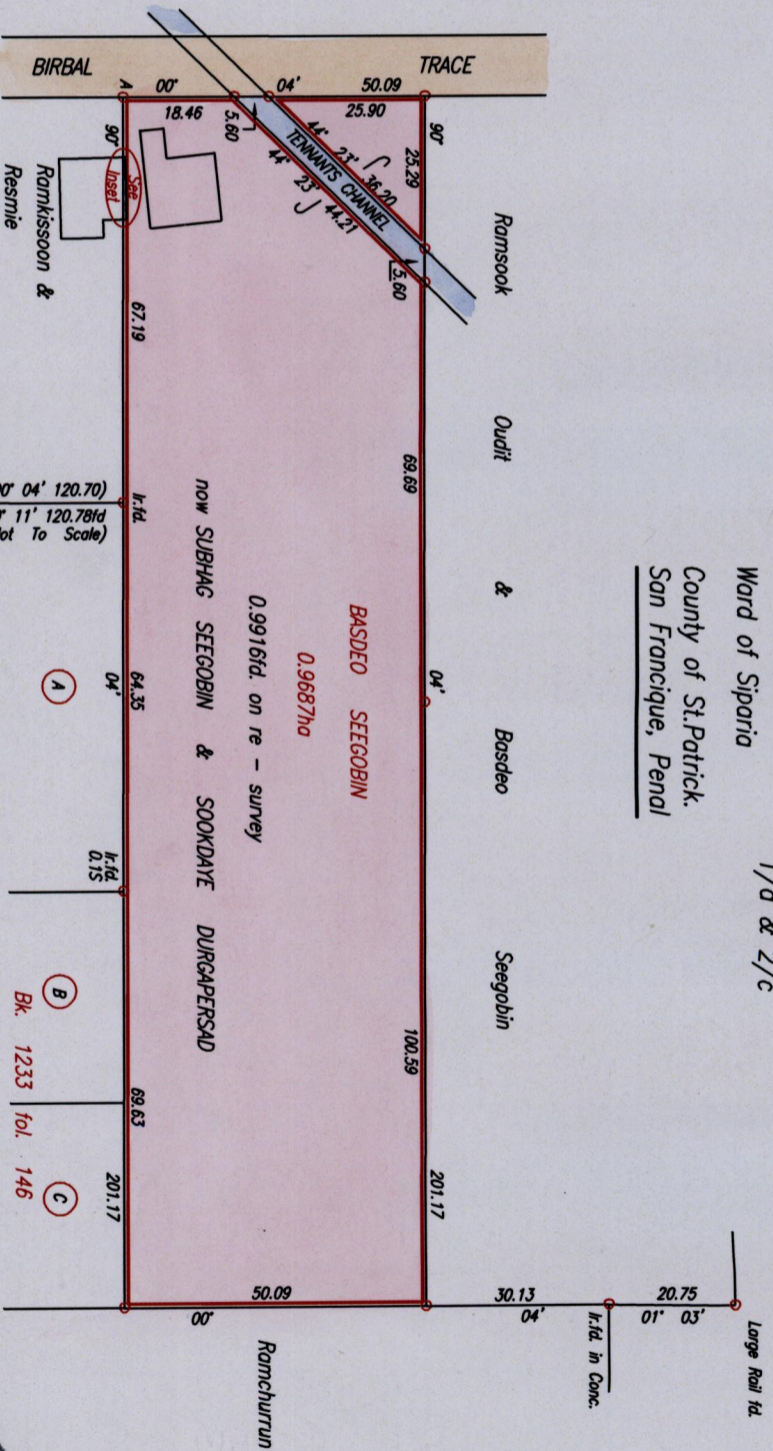
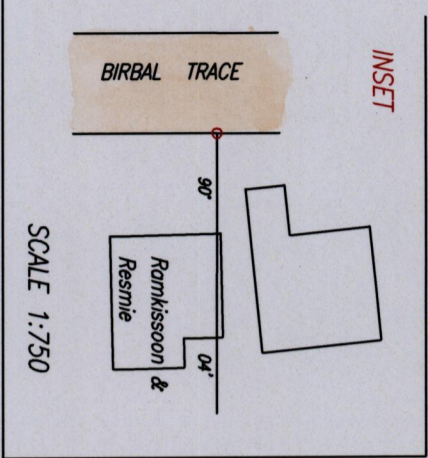


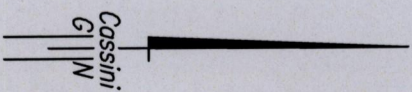
R.P.O. Vol. Fol.  
 C.I. Vol. 1768 Fol. 213  
 Vide Bk. 1233 fol. 146  
 Vide Bk. 999 fol. 17

Cadastral Sheet G.12.H. 63E  
 1/d & 2/c  
 Ward of Siparia  
 County of St.Patrick.  
San Francisque, Penal



ROAD RES. 4.50m WD.

00° 04' 120.70"  
 00° 11' 120.78fd  
 (Not To Scale)



Approved

*Reynold Bhikarry*  
 Director of Surveys

2008.10.02

PLAN of a Parcel of land coloured pink in the Ward of Siparia  
 Containing zero point nine nine one six hectare.  
 Surveyed by me, with due authority, in July, 2008  
 In accordance with Regulation 25 (1) of the Land Surveyors' Regulations 1998,  
 I certify that this plan is correct.

Checked by...

*Walter 23/9/08*

*Reynold Bhikarry*

Entered on...

Trinidad & Tobago Land Surveyor. 28th July 2008.

NOTE : Input A 665854mE, 1126128mN  
 (U.T.M. 20 Naparima (+/-5m))  
 SCALE 1:1250

Distances are in metres

Coordinates obtained from hand held GPS.

Denotes Iron put except where otherwise stated  
 Bearings are Cassini Grid based on Solar Observations

