

R.P.O. Vol 13

Fol. 337

Ward of Ortoire

C.T. Vol. 1034

Fol. 35

County of Victoria

SEE Bk. 324 Fol. 190

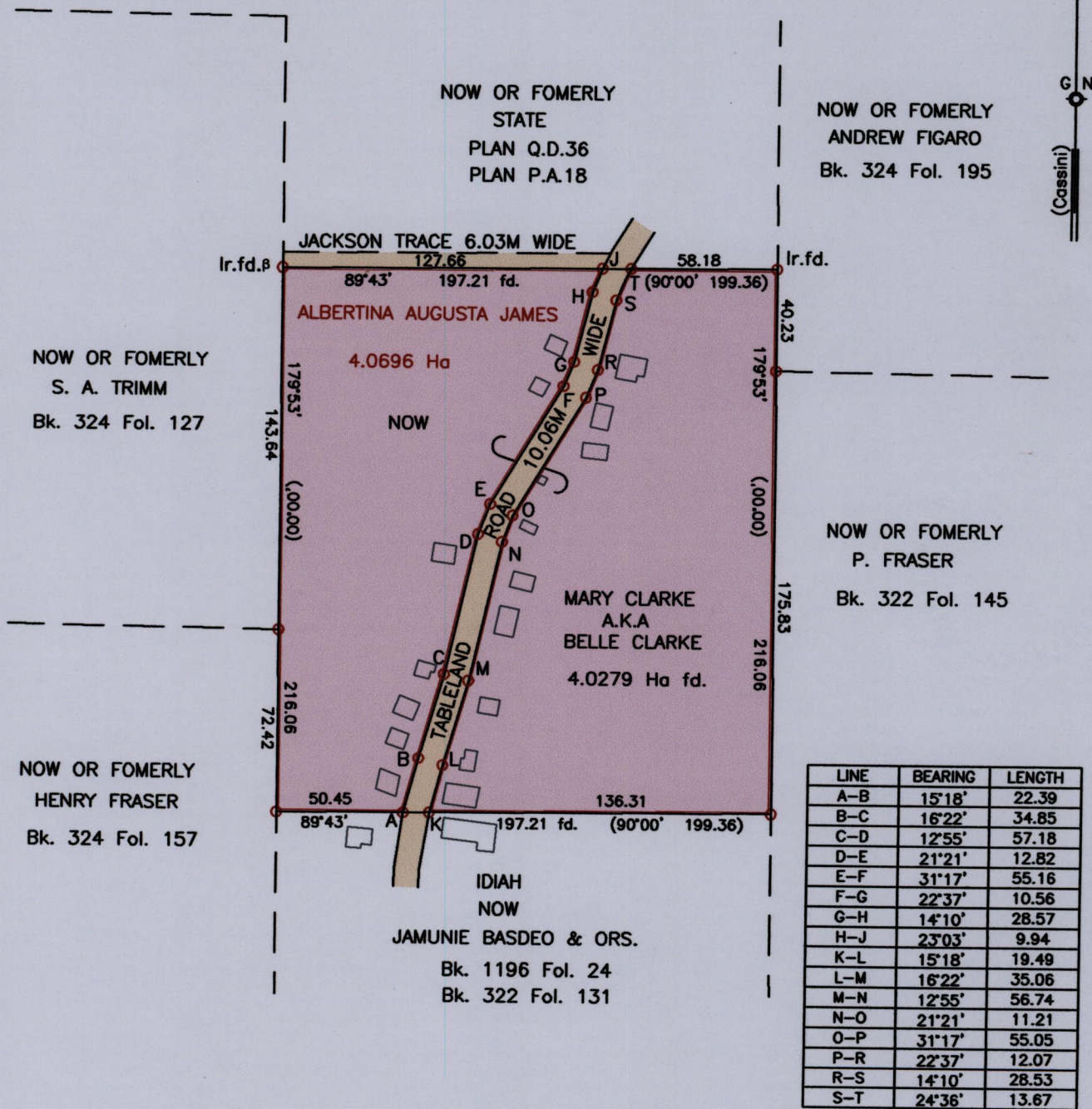
SEE PLAN Q.D. 36

SEE PLAN P.A. 18

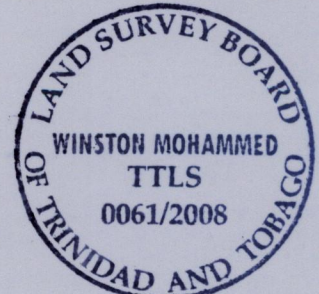
SEE Bk. 322 Fol. 131

SEE Bk. 1196 Fol. 241

Cadastral Sheet H.1.F, 54F
2/c



Approved.....
Winston Mohammed
 Director of Surveys
 2008.10.02



o Denotes Iron put except otherwise stated. Scale 1:2500
 Bearings are Cassini grid based on solar observations Distances are in metres
 Plan of a parcel of land coloured pink in the Ward of Ortoire
 Containing four point zero two seven nine hectares
 Surveyed by me, with due authority in September 2003
 In accordance with Regulation 25 (1) of the Land Surveyors' Regulations 1998,
 I certify that this plan is correct.

Checked by.....
 Entered.....
 Trinidad and Tobago Land Surveyor 2008