

1427

64

REMAINING PORTION

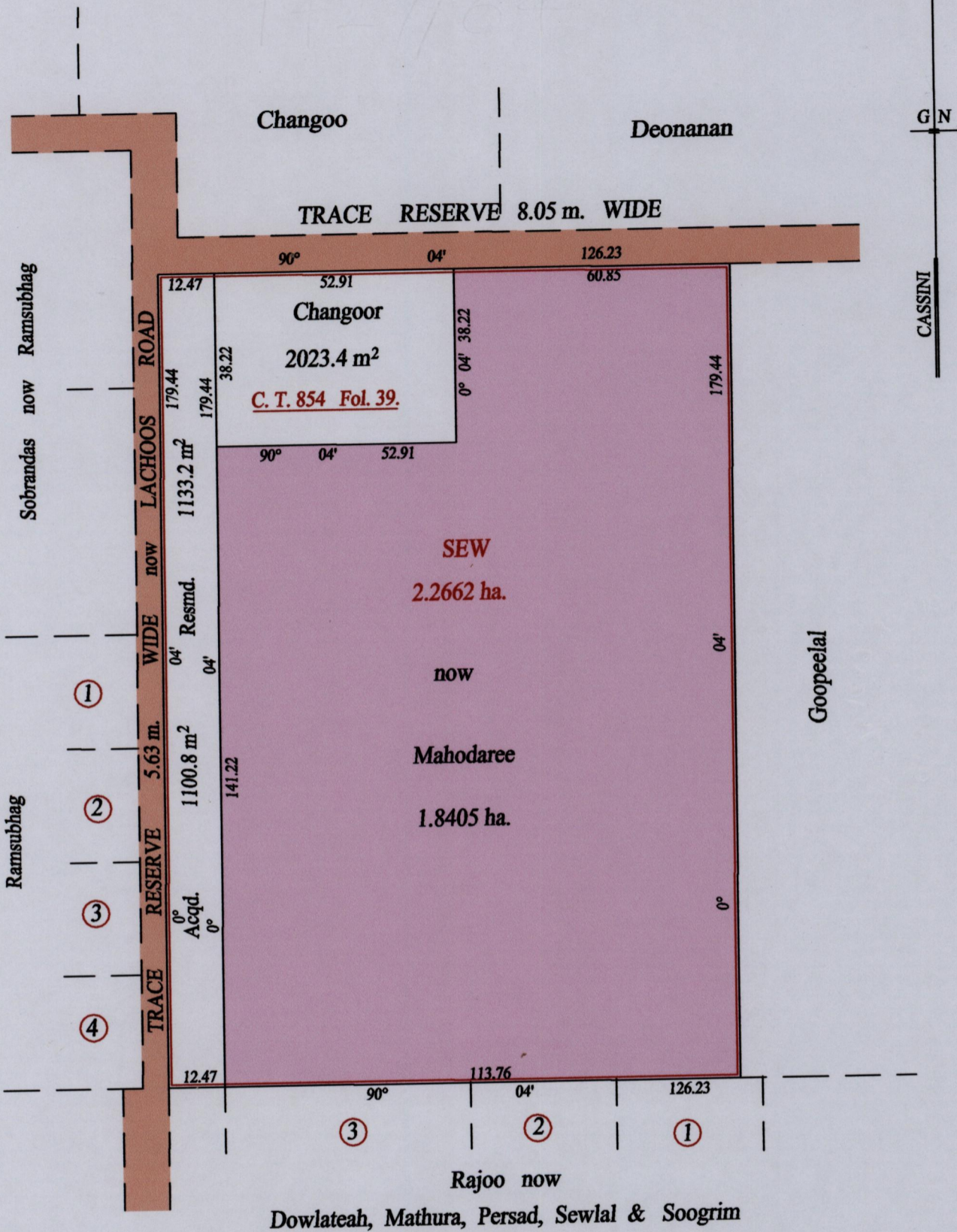
R.P.O. Vol. 192 Fol. 543

C.T. Vol. 728 Fol. 443

Ward of Siparia

County of St. Patrick

Cadastral Sheet (G 13 O) 63.F. / 3/d



Approved *[Signature]*
 Director of Surveys
 2008.9.29

Vide Bk. 897 fol. 64

SCALE : 1:1250

Note: Bearings are cassini grid based on solar observations Distances are in metres

This is a true copy of a diagram of two point two six six two hectares, originally transferred to Sew, shewing a portion coloured pink and containing one point eight four zero five hectares being the remainder after one (1) previous transfer, (1) resumption & (1) acquisition of another portion of the land.

In accordance with Regulation 25 (1) of the Land Surveyors' Regulations 1998, I certify that this plan is correct.

Checked by *[Signature]* 21/9/08

Entered on Trinidad & Tobago Land Surveyor 19.09.2008

