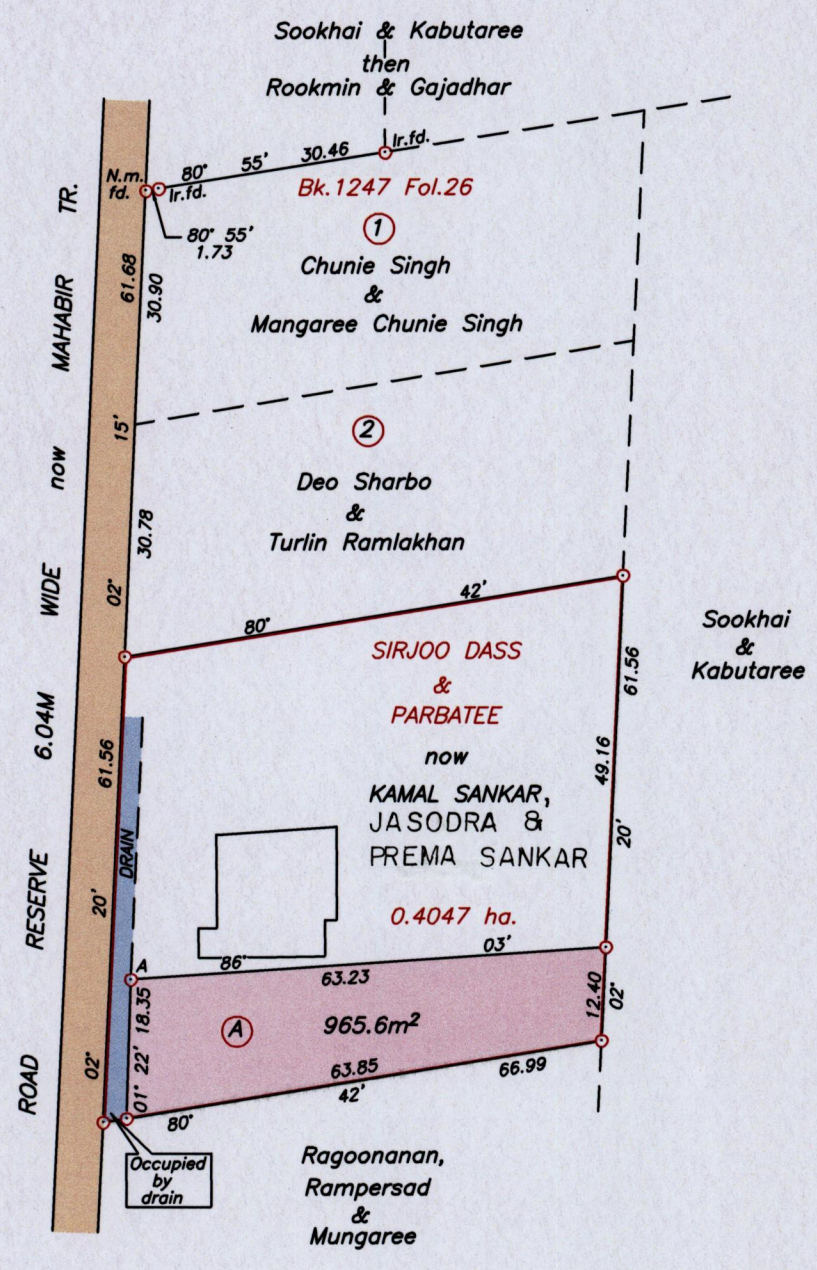


R.P.O. Vol. 559  
C.T. Vol. 1257

Fol. 495  
Fol. 373

Cadastral Sheet G.14.I.  $\frac{64D}{3/a}$   
Ward of Siparia  
County of St. Patrick  
Bk. 495 Fol. 68  
Bk. 923 Fol. 277



Approved *[Signature]*  
Director of Surveys  
2008.09.22

SCALE 1/1000  
Distances are in metres

Co-ordinates obtained by Hand Held G.P.S. (WGS84 U.T.M. Zone 20)  
Point A  
Accuracy ± 6m  
E 675211.00m  
N 1123703.00m

Note: To obtain cassini bearings + 18 minutes

○ Denotes Iron put except otherwise stated

Bearings are U.T.M. based on Solar Observations

Plan of a Parcel of land coloured pink in the Ward of Siparia  
Containing nine hundred and sixty five point six square metres  
Surveyed by me, with due authority, on 28th August 2007

In accordance with Regulation 25 (1) of the Land Surveyors' Regulations 1998,  
I certify that this plan is correct.

Entered on *[Signature]*  
Checked by *[Signature]* Trinidad & Tobago Land Surveyor 2008

