

U.P.R.N No.....

Cadastral Sheet (E.6 I.) 35D  
2/b

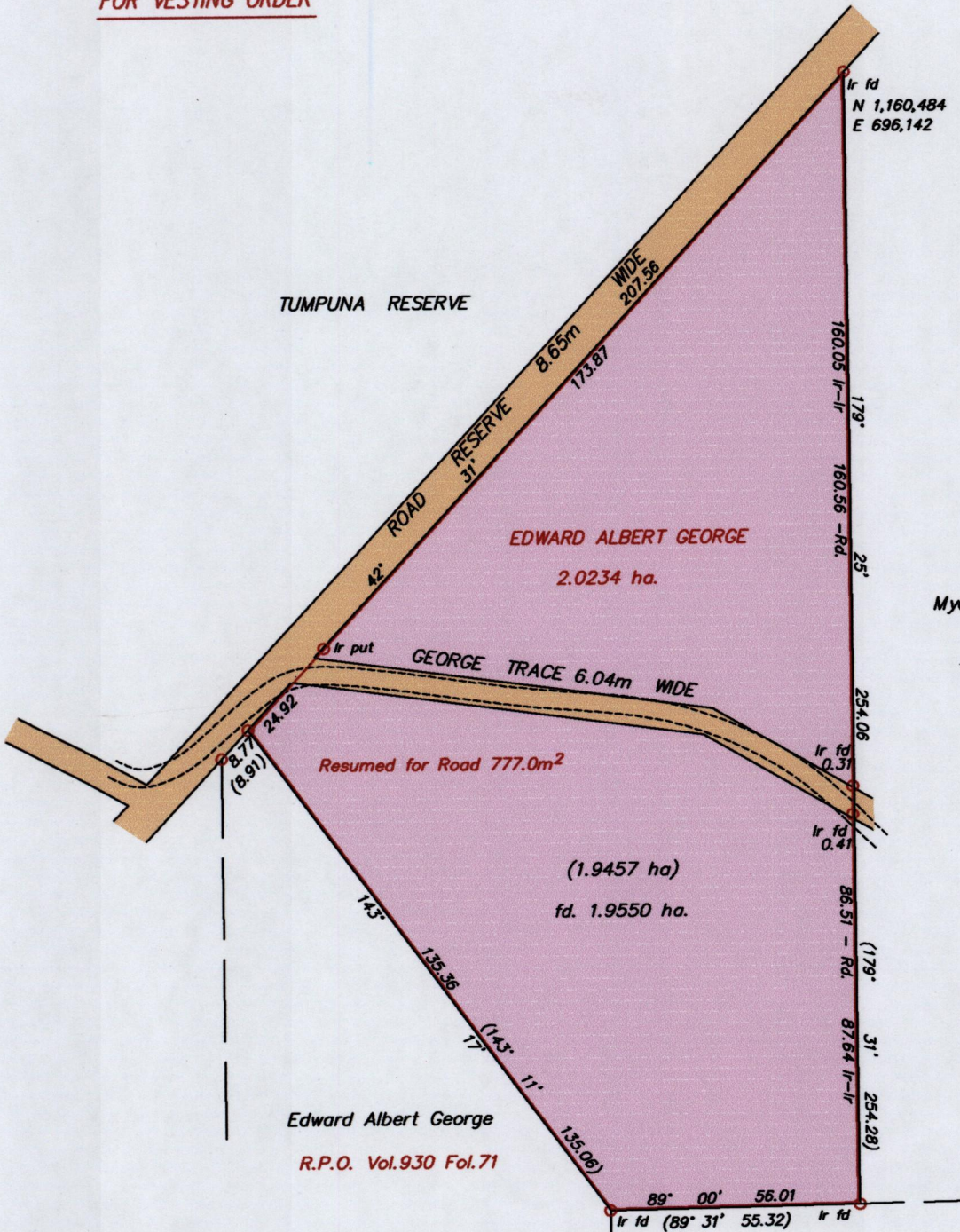
R.P.O. Vol. 914 Fol. 461

Ward of Tamana

C.T. Vol..... Fol.....

County of St. Andrew

FOR VESTING ORDER



See Plan D.H. 17  
W. & H. S.O. No.10/1954  
S.O. No.138/1938  
S.O. No.13/1939

Approved by *[Signature]*  
Director of Surveys  
2008.8.12

Simon de Leon

Co-ordinate are based on GPS finding  
WGS 84 U.T.M. Zone 20  
-/+ 2.00m

SCALE 1/1500  
Distances are in metres

○ Denotes Iron put unless otherwise stated  
Bearings are U.T.M. Grid based on Solar Observations  
Note : To obtain Cassini bearings add 18 minutes

Plan of a Parcel of land coloured pink in the Ward of Tamana  
Containing one point nine five five zero hectares  
Redefined by me, with due authority in October 2007 for Timothy Crick  
In accordance with Regulation 25 (1) of the Land Surveyors' Regulations 1998,  
I certify that this plan is correct.

Checked by *[Signature]* *[Signature]*

Entered on..... Trinidad and Tobago Land Surveyor *[Signature]* July 2008

