

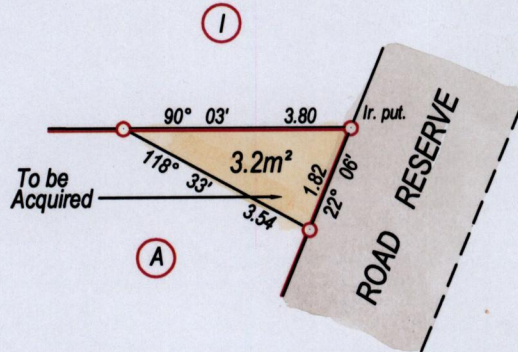
1427

49

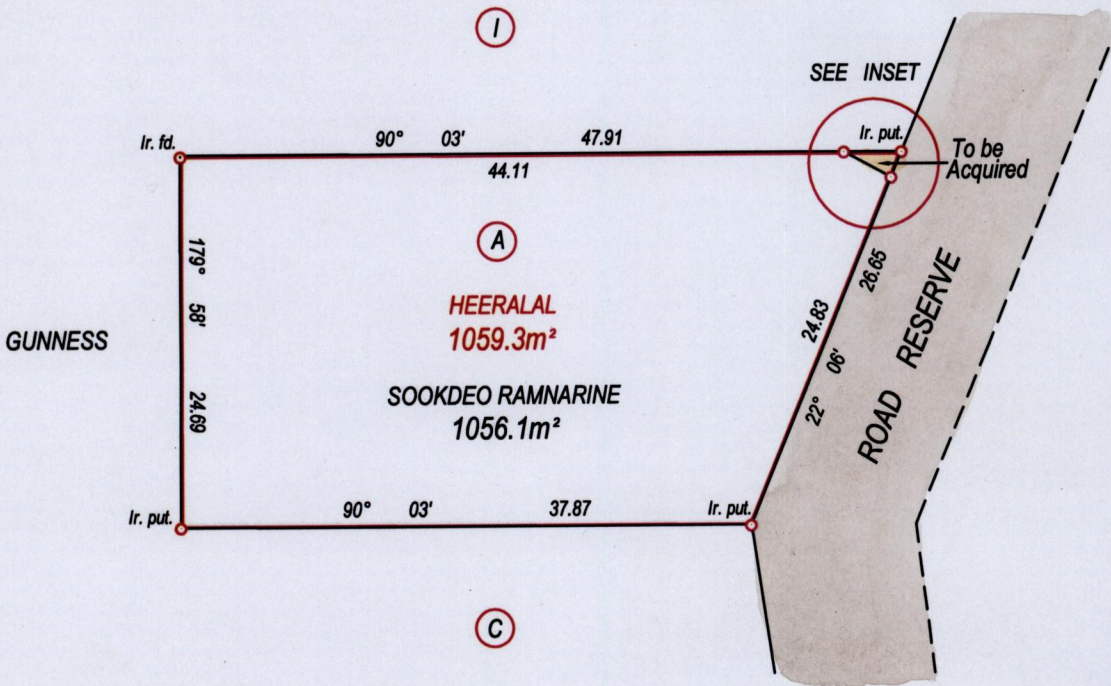
R.P.O. Vol. 114 Fol. 633
C.T. Vol. 1861 Fol. 19

Cadastral Sheet G 12 P, $\frac{63E}{4/c/3}$
Ward of Siparia
County of St. Patrick

INSET



SCALE : 1/125



Approved
[Signature]
 Director of Surveys 2006.1.26

SCALE : 1/500
 Distances are in metres

To obtain compass bearings subtract 3 minute

Plan of a parcel of land coloured raw sienna in the Ward of Siparia
 Containing three point two square metres
 Surveyed by Mr Seeram Kalliecharan, with due authority, in March 1983
 to be acquired for Waterline.
 In accordance with Regulation 25(1) of the Land Surveyors' Regulations 1998,
 I certify that this plan is correct.

Checked by *[Signature]* 25.1.06
 Entered on.....

[Signature]

Trinidad & Tobago Land Surveyor..... 6th Jan. 2006