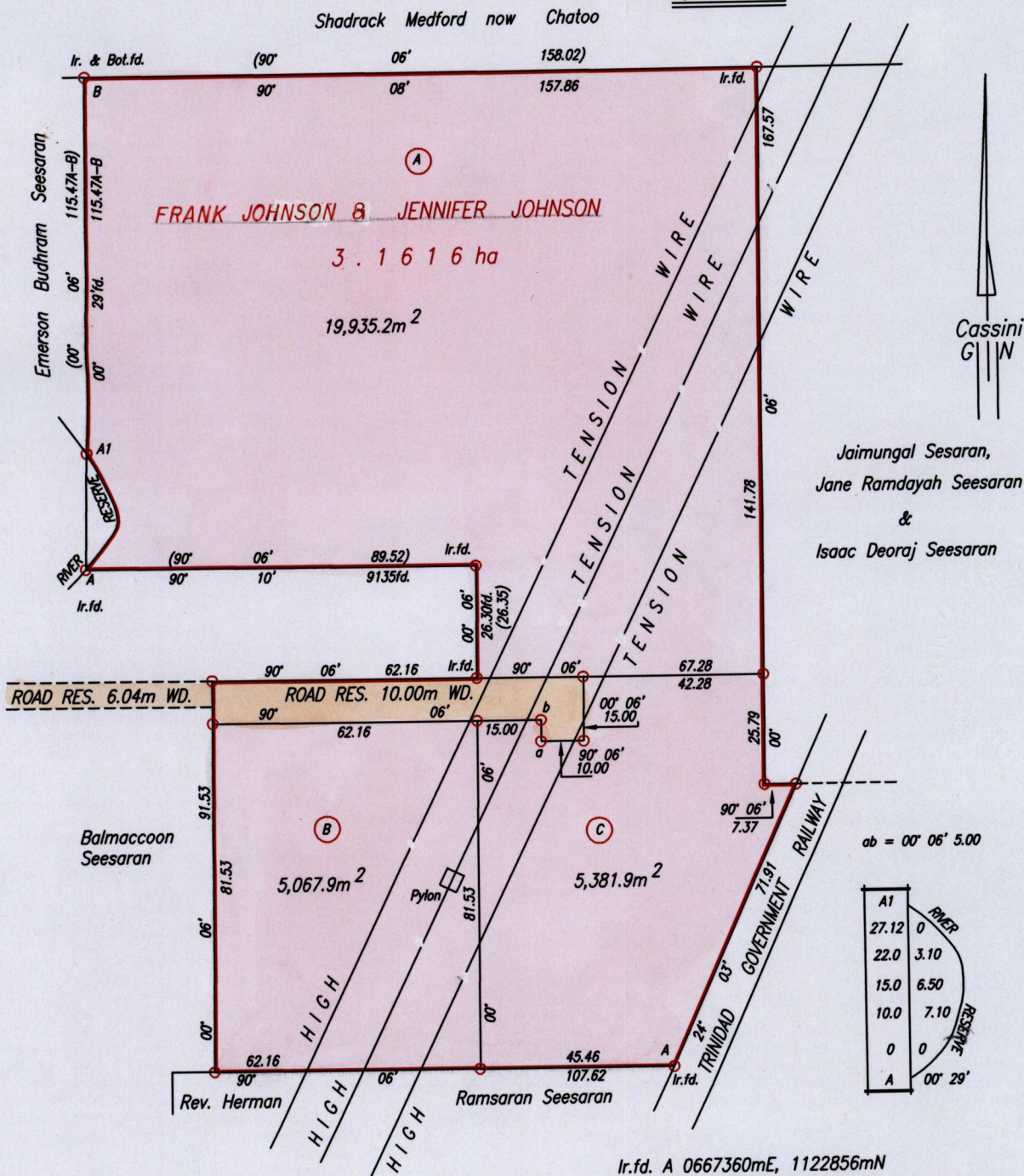


R.P.O. Vol. 78 Fol. 449  
C.T. Vol. 2704 Fol. 281  
Vide Bk. 985 fol 213

Cadastral Sheet G.13.M. 63E  
4/c  
Ward of Siparia  
County of St.Patrick.  
Syne Village



Ir.f.d. A 0667360mE, 1122856mN  
(U.T.M. 20, WGS 84 (+/-5m))

○ Denotes Iron put except otherwise stated  
SCALE 1:1500  
Distances are in metres

Approved *[Signature]*  
Director of Surveys

Bearings are Cassini Grid based on Solar Observations  
PLAN of 3 Parcels of land coloured pink in the Ward of Siparia  
Containing together three point zero three eight five hectares.  
Surveyed by me, with due authority, in November, 2007  
In accordance with Regulation 25 (1) of the Land Surveyors' Regulations 1998,  
I certify that this plan is correct.

Checked by *[Signature]* *[Signature]*

Entered on . . . . . Trinidad & Tobago Land Surveyor. . . . . 23rd April . . . . . 2008.

