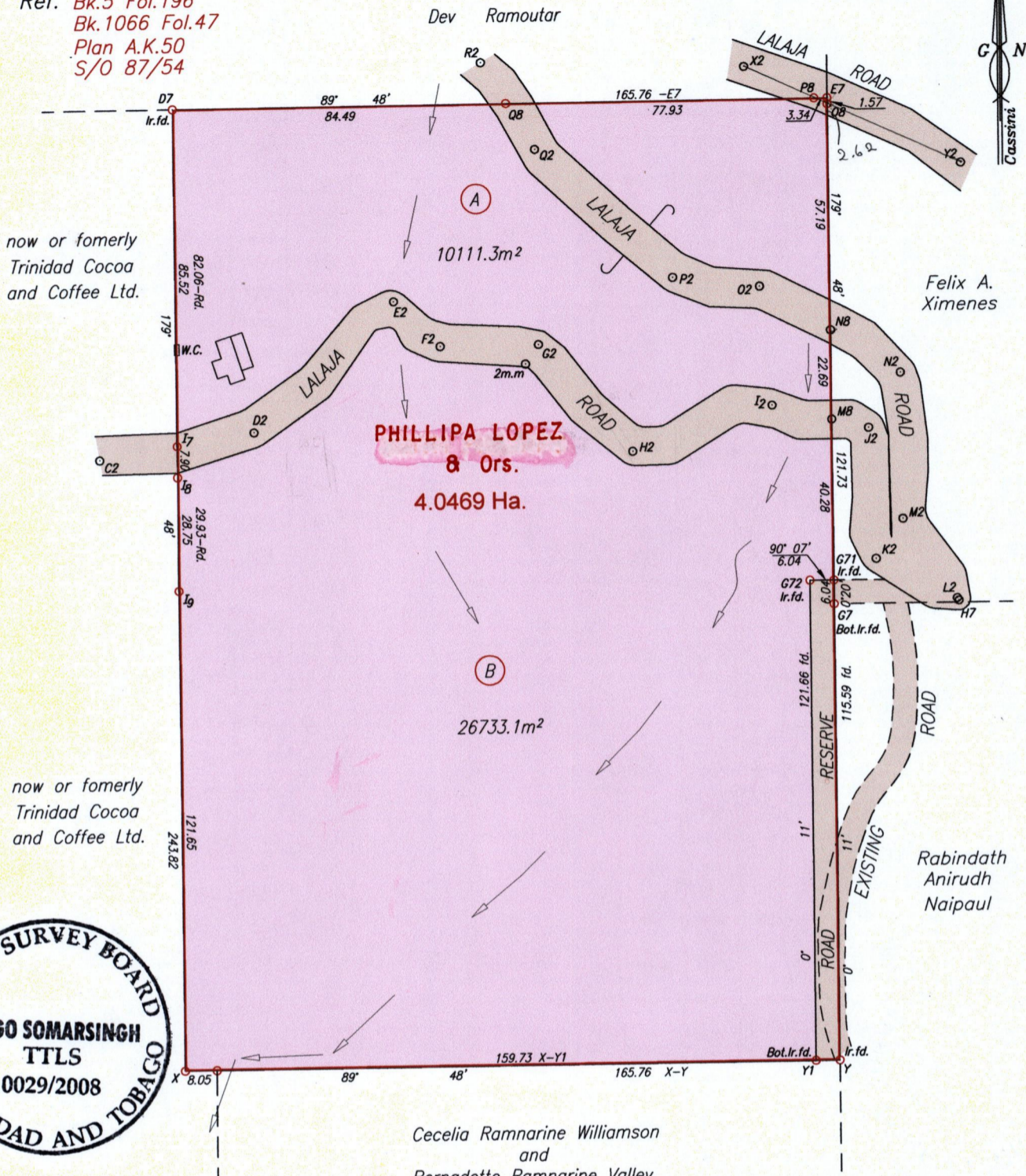


R.P.O. Vol. 11 Fol. 181
C.T. Vol. 4677 Fol. 69

Cadastral Sheet B.14.L. 14C
Ward of Arima 3/c
County of St. George

Ref. Bk.5 Fol.196
Bk.1066 Fol.47
Plan A.K.50
S/O 87/54



now or formerly
Trinidad Cocoa
and Coffee Ltd.

now or formerly
Trinidad Cocoa
and Coffee Ltd.



Station	Bearing	Distance
C2 - I7	80° 32'	19.88
I7 - D2	80° 32'	19.79
C2 - D2	80° 32'	39.67
D2 - E2	47° 26'	48.42
E2 - F2	134° 27'	16.44
F2 - G2	89° 41'	24.90

Station	Bearing	Distance
G2 - H2	139° 15'	36.23
H2 - I2	72° 29'	37.02
I2 - M8	103° 49'	15.42
M8 - J2	103° 49'	9.53
I2 - J2	103° 49'	24.95
J2 - K2	177° 21'	33.15
K2 - L2	116° 37'	22.79
L2 - H7	146° 16'	0.74
H7 - G7	269° 48'	31.46 fd.
L2 - M2	326° 16'	24.38
M2 - N2	359° 35'	36.98
N2 - O2	302° 20'	41.66

2m.m N 1184000 Hand held GPS
E 687804 U.T.M. +/- 4m

Station	Bearing	Distance
N2 - N8	302° 20'	20.63
N8 - O2	302° 20'	21.03
O2 - P2	276° 34'	22.07
P2 - Q2	313° 33'	47.70
Q2 - Q8	328° 40'	13.86
Q2 - R2	328° 55'	26.15
Q8 - R2	328° 40'	12.29
X2 - P8	114° 58'	19.54
P8 - O8	114° 58'	3.69
X2 - O8	114° 58'	23.23
X2 - Y2	114° 58'	59.91
G2 - 2m.m	213° 10'	5.93

Approved *[Signature]*
Director of Surveys
2008-9-11

← Earthen Drain
○ Denotes Iron put except otherwise stated

Bearings are Cassini Grid based on Solar Observations
PLAN of 2 Parcels of land coloured pink in the Ward of Arima
Containing together three point six eight four four hectares
Surveyed by me, with due authority in April 2006
In accordance with Regulation 25 (1) of the Land Surveyors' Regulations 1998.
I certify that this plan is correct.

Checked by
Entered on

[Signature]
Trinidad & Tobago Land Surveyor 10/04/2008

SCALE 1/1500
Distances are in metres

