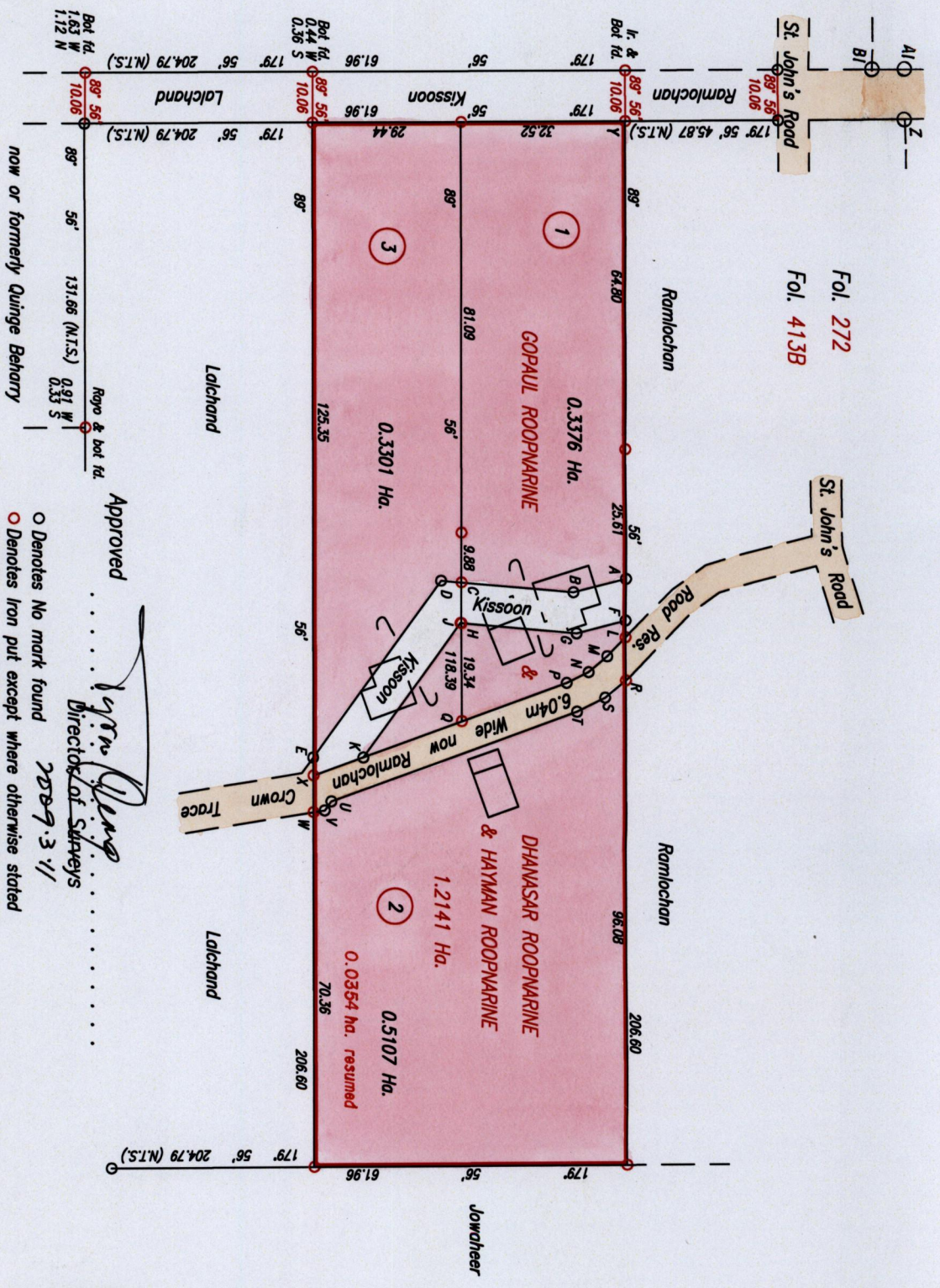


R.P.O. Vol. 40
C.T. Vol. 2923

- References
S.O. 16/1898
S.O. 345/14
Bk. 254 Fol.44
Bk. 721 Fol.128
Bk. 707 Fol.107
Bk. 856 Fol.43 & 44

Y - Z 359° 56' 209.62 (N.T.S.)
Z - A1 289° 56' 10.06
A1 - B1 179° 56' 53.51 (N.T.S.)



Approved
[Signature]
Director of Surveys
2009-3-11

○ Denotes No mark found
○ Denotes Iron put except where otherwise stated
Bearings are based on Solar Observations
PLAN of 3 Parcels of land coloured pink in the Ward of Charuma
Containing together one point one seven eight four hectares
Surveyed by me, with due authority, in June 2000 & October 2003
In accordance with Regulation 25 (1) of the Land Surveyors' Regulations 1998,
I certify that this plan is correct.

Checked by: *[Signature]*

[Signature]

Entered on: Trinidad & Tobago Land Surveyor. 20th February 2006.

LEGEND

A - B	185° 41'	10.67
B - C	185° 14'	22.28
C - D	185° 14'	4.05
D - E	126° 06'	43.05
F - G	185° 41'	10.01
G - H	185° 14'	22.92
H - J	185° 14'	0.23
J - K	126° 06'	32.65
L - M	134° 12'	5.19
M - N	140° 12'	4.84
N - P	154° 10'	4.84
P - Q	180° 11'	22.12
Q - K	180° 11'	20.72
R - S	140° 24'	5.29
S - T	153° 58'	6.21
T - U	180° 11'	51.76
U - V	126° 06'	2.22
V - W	170° 56'	2.30
A - F	89° 56'	8.30
F - L	89° 56'	3.30
L - R	89° 56'	8.51
C - H	89° 56'	8.08
K - X	180° 11'	10.56
E - X	89° 56'	3.61
X - W	89° 56'	7.28

Lot 1 to be amalgamated to Lot 1A
Lot 3 to be amalgamated to Lot 3A

SCALE 1:1250
Distances are in metres

