

1427 127/198

1988

R.P.O. Vol. 711
C.T. Vol. 2630

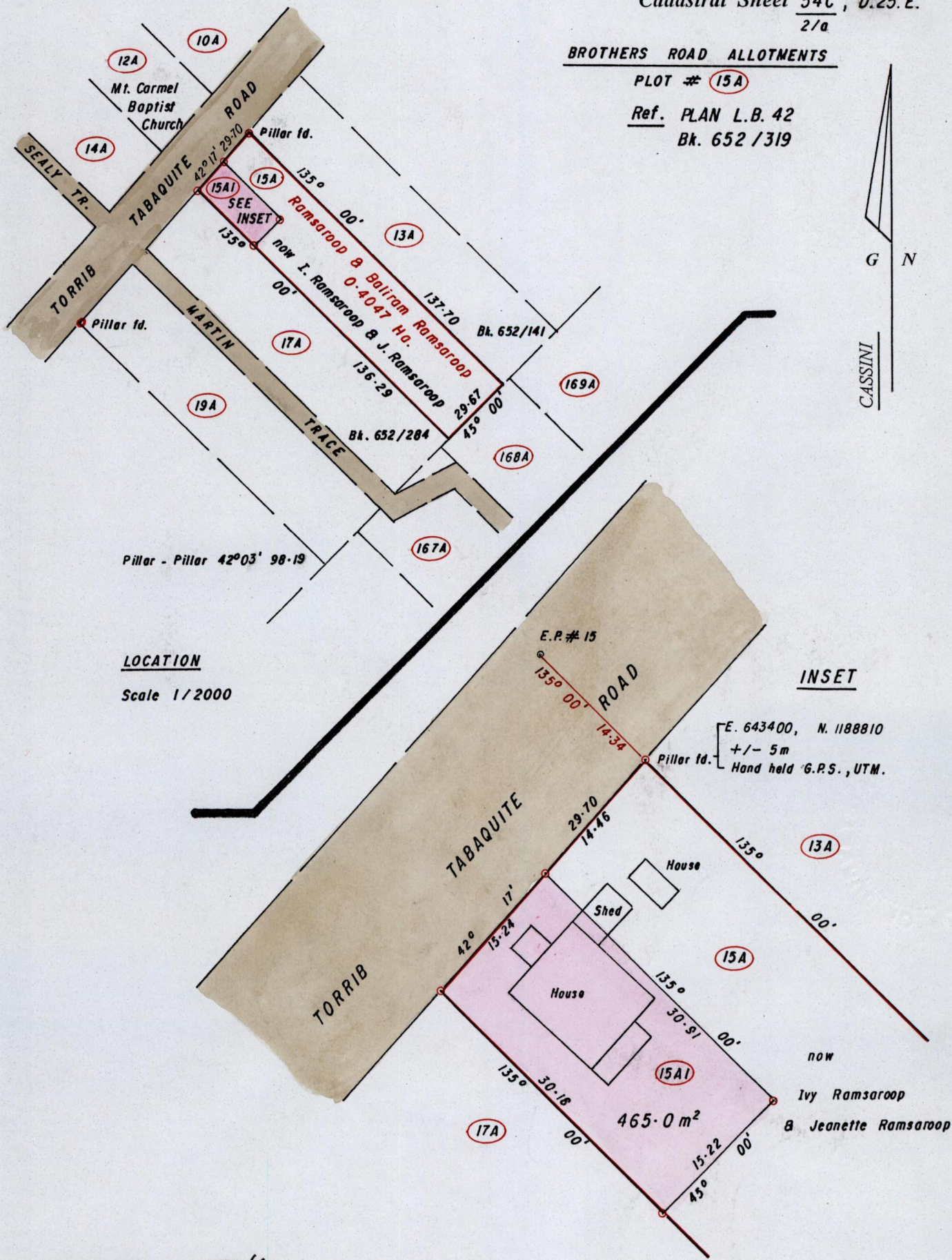
Fol. 107
Fol. 235

Ward of Charuma
County of Nariva
Cadastral Sheet 54C, D.25.E.
2/a

BROTHERS ROAD ALLOTMENTS

PLOT # 15A

Ref. PLAN L.B. 42
Bk. 652/319



LOCATION
Scale 1/2000

INSET

E.P. # 15
E. 643400, N. 1188810
+/- 5m
Hand held G.P.S., UTM.

Approved *[Signature]*
Director of Surveys
2009.1.15

○ Denotes Iron put unless otherwise stated
Bearings are Cassini Grid based on Solar Obs.
SCALE 1/500 (INSET)
Distances are in METRES

Note: To Obtain compass bearings add/subtract minutes

PLAN of a Parcel of land coloured PINK in the Ward of Charuma
Containing four hundred and sixty five point zero square metres
Surveyed by me, with due authority, in December 2007
In accordance with Regulation 25 (1) of the Land Surveyors' Regulations 1998,
I certify that this plan is correct.

Checked by *[Signature]*
[Signature]
Trinidad and Tobago Land Surveyor.....200

