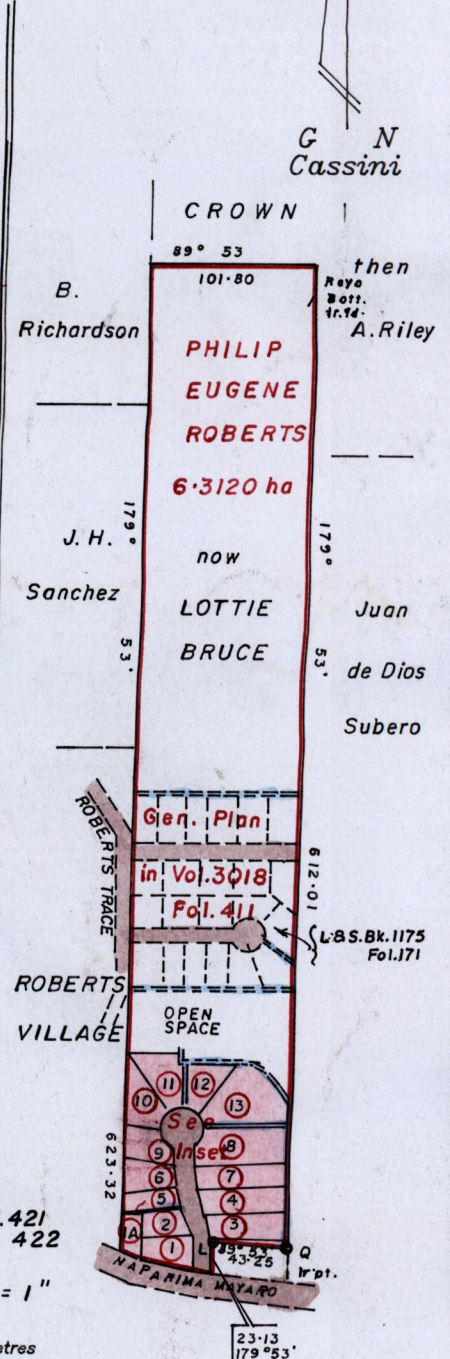
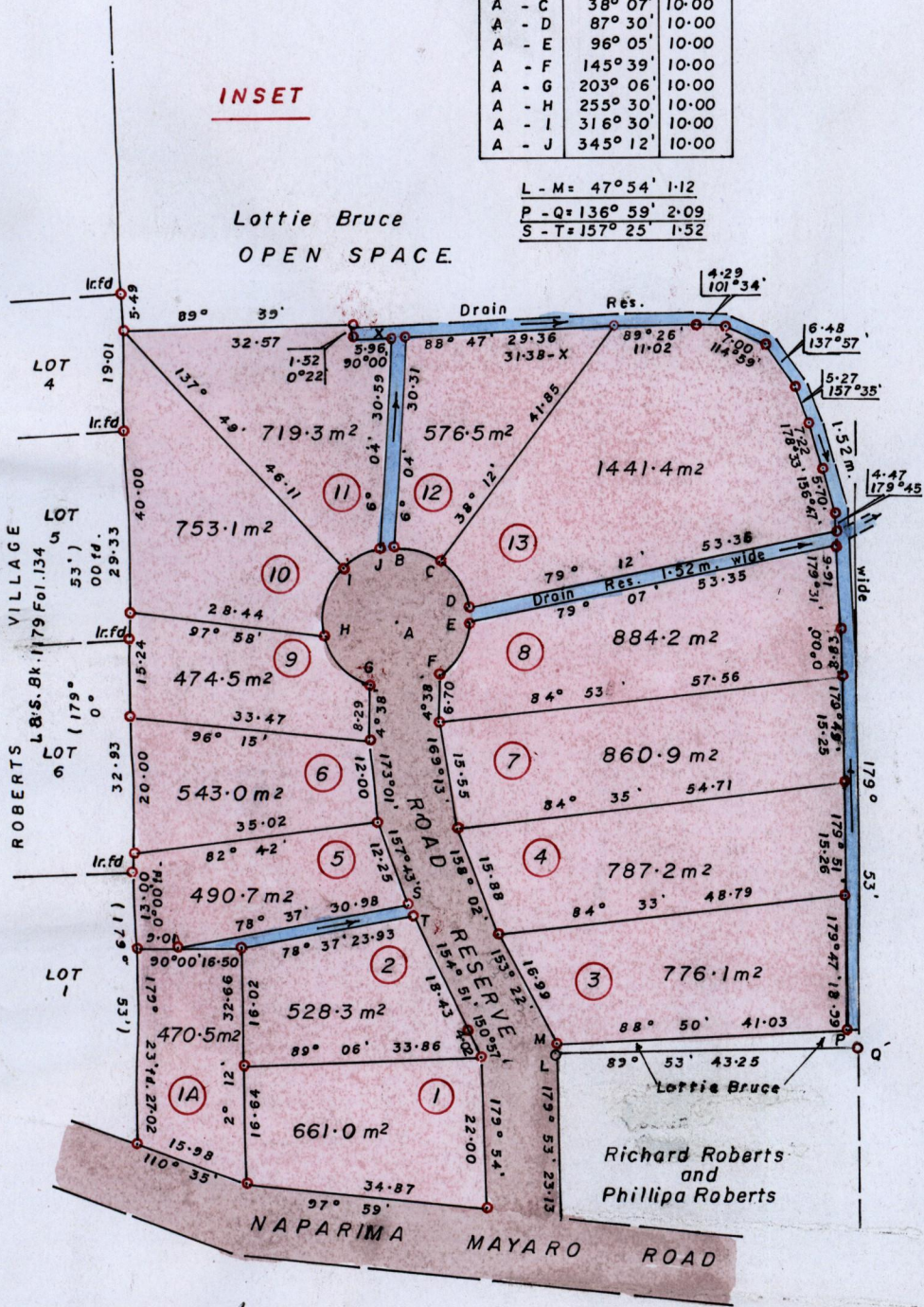


Sta.	Bear.	Dist.
A - B	357° 05'	10.00
A - C	38° 07'	10.00
A - D	87° 30'	10.00
A - E	96° 05'	10.00
A - F	145° 39'	10.00
A - G	203° 06'	10.00
A - H	255° 30'	10.00
A - I	316° 30'	10.00
A - J	345° 12'	10.00

L - M = 47° 54' 1.12
 P - Q = 136° 59' 2.09
 S - T = 157° 25' 1.52

Lottie Bruce
 OPEN SPACE



Approved *[Signature]*
 Director of Surveys
 2008-9-11

SCALE: 1/1000
 Distances are in metres

c.f. L&S.Bk. 1033 fol. 421 & 422

SCALE: 6 chns = 1"

Distances are in metres

Iron put at each corner except otherwise indicated
 Note: To obtain compass bearings ~~subtract~~ ^{add} 7 minutes.

14
 PLAN of ~~the~~ Parcels of land coloured pink in the Ward of Ortoire
 Containing together nine thousand nine hundred and sixty six point seven square metres.

Surveyed by me with due authority in July 2007

In accordance with Reg 25(1) of the Land Surveyors' Regulations 1998,
 I certify that this plan is correct.

Checked by *[Signature]* 9/9/08

Entered.....

Trinidad & Tobago Land Surveyor. *[Signature]* 2007

