

1427

1136

R.P.O. Vol. 29

Fol. 99

Cadastral Sheet G.5.P., G.10. D., H.1.M., H.6.A. 54F
3/d,4/c

C.T. Vol. 3207

Fol. 107

Ward of Savana Grande.

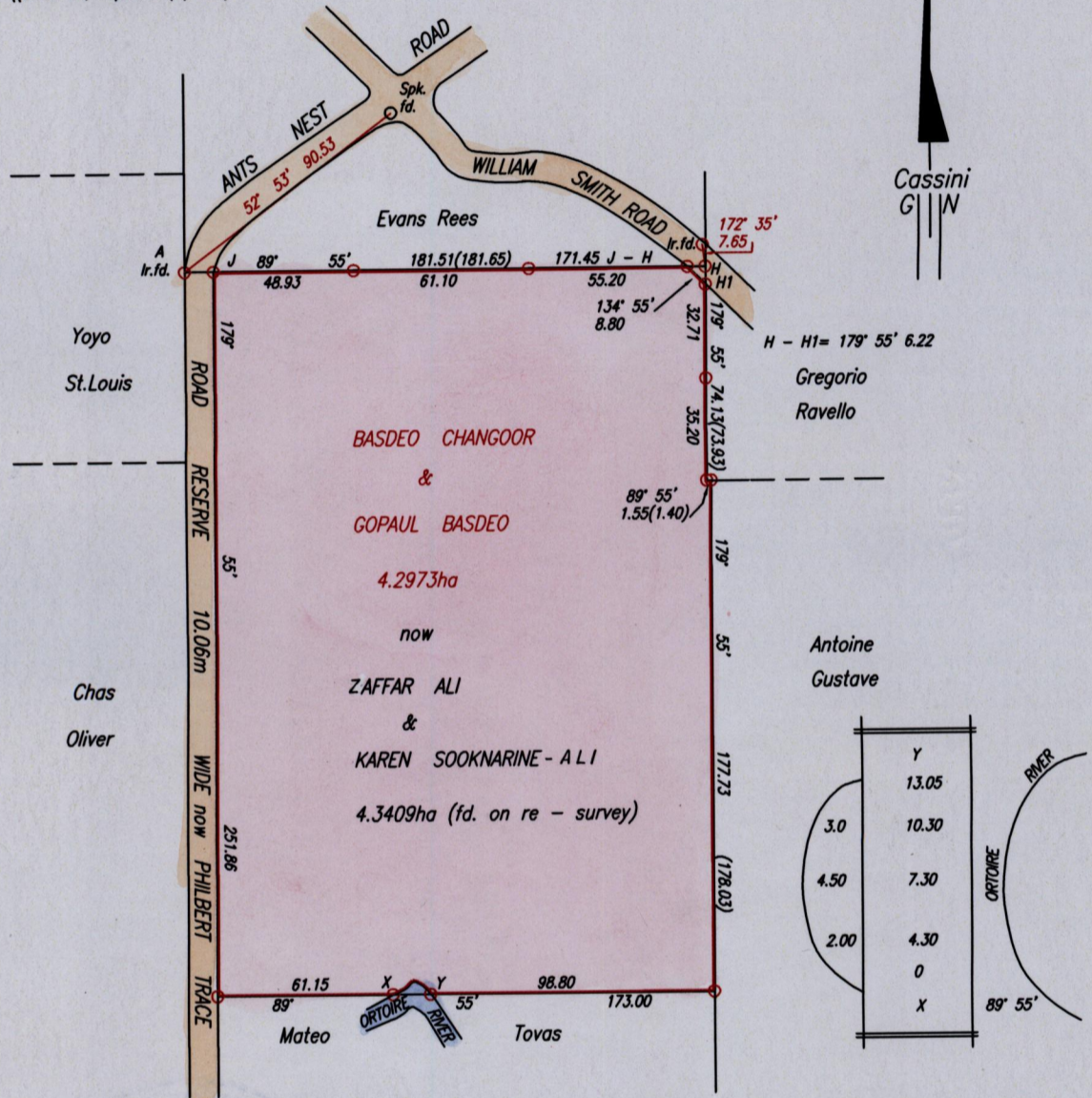
Vide Bk. 713 fol. 112

County of Victoria

Vide Bk. 1249 fol. 271

Mantacool

Ir.put J 688352mE, 1133841mN
((U.T.M. 20, Naparima (+/-6m))



Approved

[Signature]
Director of Surveys

2008.10.12

Coordinates obtained from hand held GPS.

SCALE 1:2500

Distances are in metres

○ Denotes Iron put except otherwise stated

Bearings are Cassini Grid based on Solar Observations

PLAN of a Parcel of land coloured pink in the Ward of Savana Grande

Containing four point three four zero nine hectares.

Redefined by me, with due authority, on 29th. September, 2008

In accordance with Regulation 25 (1) of the Land Surveyors' Regulations 1998,

I certify that this plan is correct.

Checked by

[Signature]

[Signature]

Entered on

Trinidad & Tobago Land Surveyor. 20th October 2008.

