

1427

179

R.P.O. Vol. 111 Fol. 121

C.T. Vol. 4978 Fol. 101

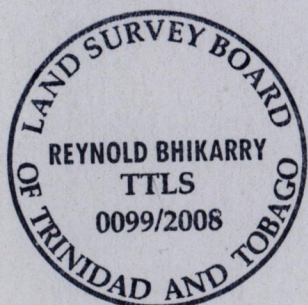
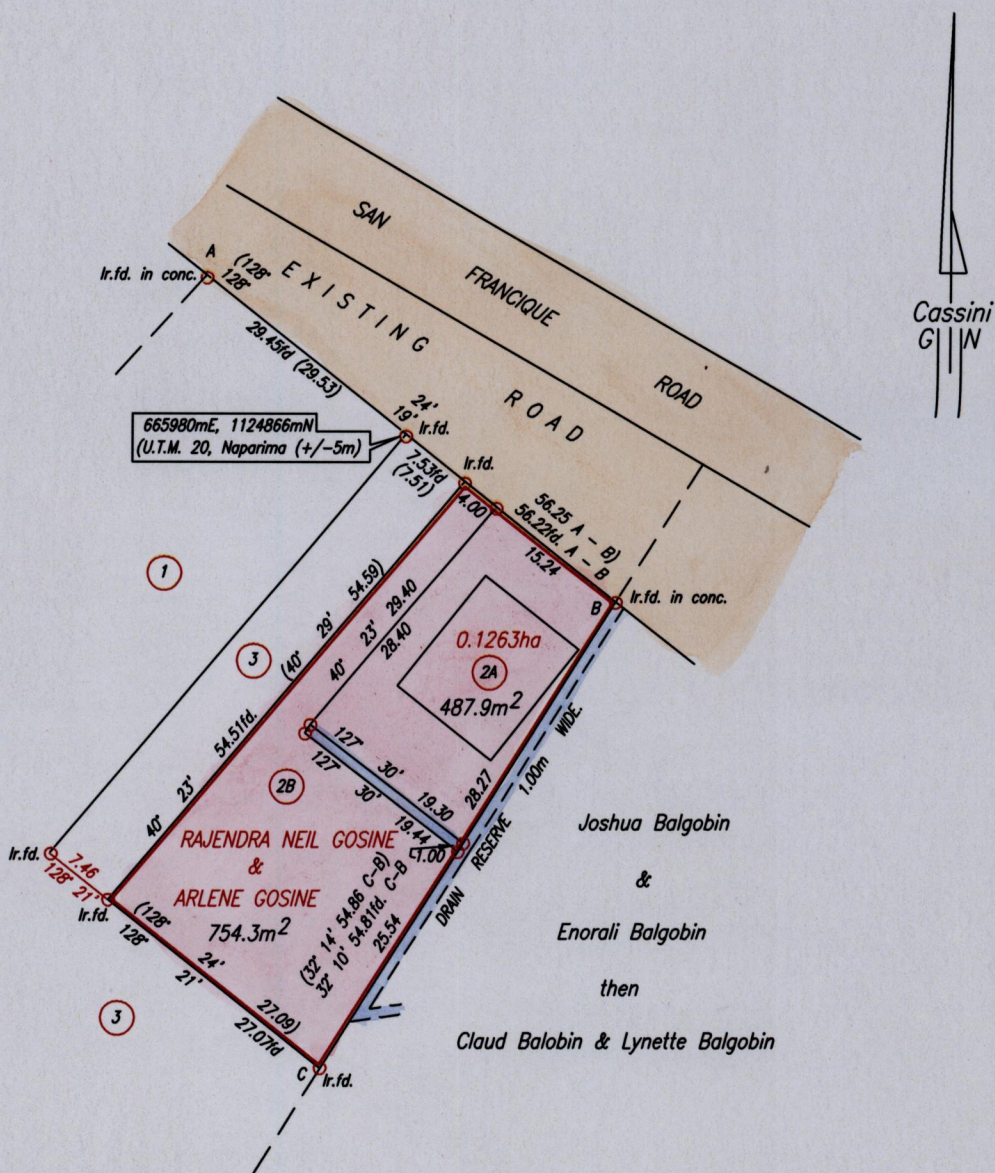
Bk. 1003 fol 164

Cadastral Sheet G.12.H. 63E
1/d,3/b

Ward of Siparia

County of St.Patrick.

Penal



Approved

[Signature]
 Director of Surveys
 2008.12.08

Denotes Drain Reserve 1.00m Wide.

Coordinates obtained from hand held GPS.

○ Denotes Iron put except otherwise stated

Bearings are Cassini Grid based on Solar Observations

PLAN of 2 Parcels of land coloured pink in the Ward of Siparia

Containing together one thousand, two hundred and forty two point two square metres.

Surveyed by me, with due authority, in September, 2007

In accordance with Regulation 25 (1) of the Land Surveyors' Regulations 1998,

I certify that this plan is correct.

Checked by

[Signature]
 4/11/08

[Signature]
 Reynold Bhikarry

Entered on

Trinidad & Tobago Land Surveyor. 24th June 2008.

SCALE 1:750

Distances are in metres