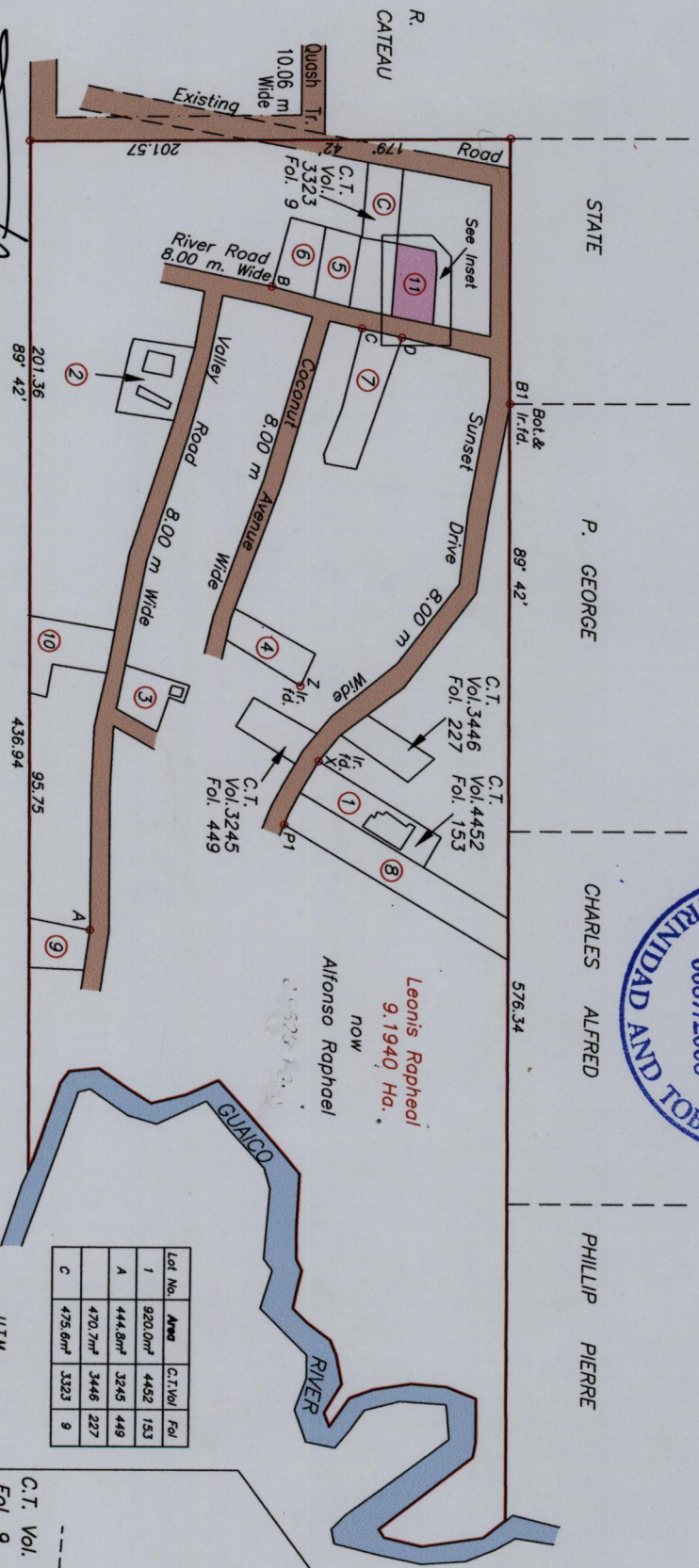




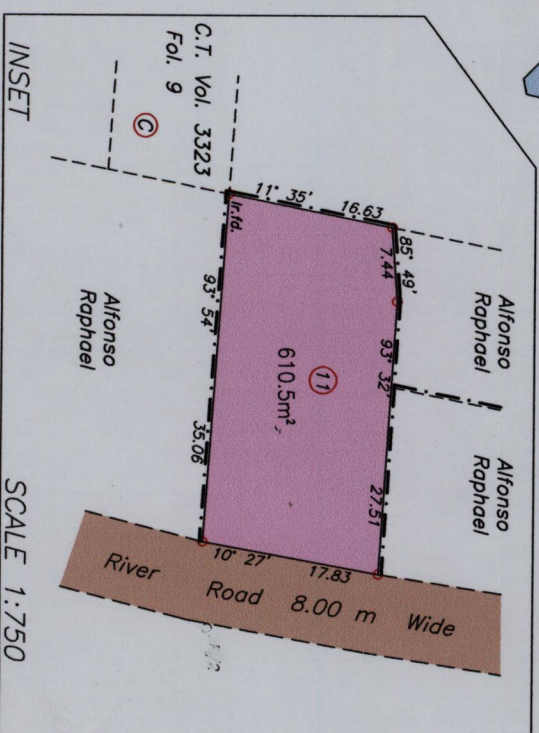
Cadastral Sheet 25F
 2/a & 2/b, C.22.J.
 Ward of Manzanilla
 County of St Andrew

Orig. in Bk. 174 Fol. 35
 Bk. 1279 Fol. 227
 Bk. 1197 Fol. 123
 Vide Plan C.A. 13
 Plan J.A. 33



Lot No.	Area	C.T. Vol	Fol
1	920.0m ²	4452	153
A	444.8m ²	3245	449
	470.7m ²	3446	227
C	475.6m ²	3323	9

U.T.M.	Reliability Error ± 3.0 M
B1	0705819
	1171556



SCALE 1:750

SCALE 1:3000

Distances are in Metres

Approved *[Signature]*
 Director of Surveys
 2008.12.08

MOSES HARRISON

Denotes chain link wire fence

Bearings are Cassini Grid based on Solar Obs.
 Denotes Iron Put unless otherwise stated

Plan of a Parcel of land coloured pink in the Ward of Manzanilla
 Containing six hundred ten point five square metres
 Surveyed by me, with due authority, in March 2006
 In accordance with Regulation 25(1) of the Land Surveyors' Regulations 1998,
 I certify that this plan is correct.

Checked by *[Signature]*

Entered on

[Signature]

Trinidad & Tobago Land Surveyor 3rd Dec. 2008