

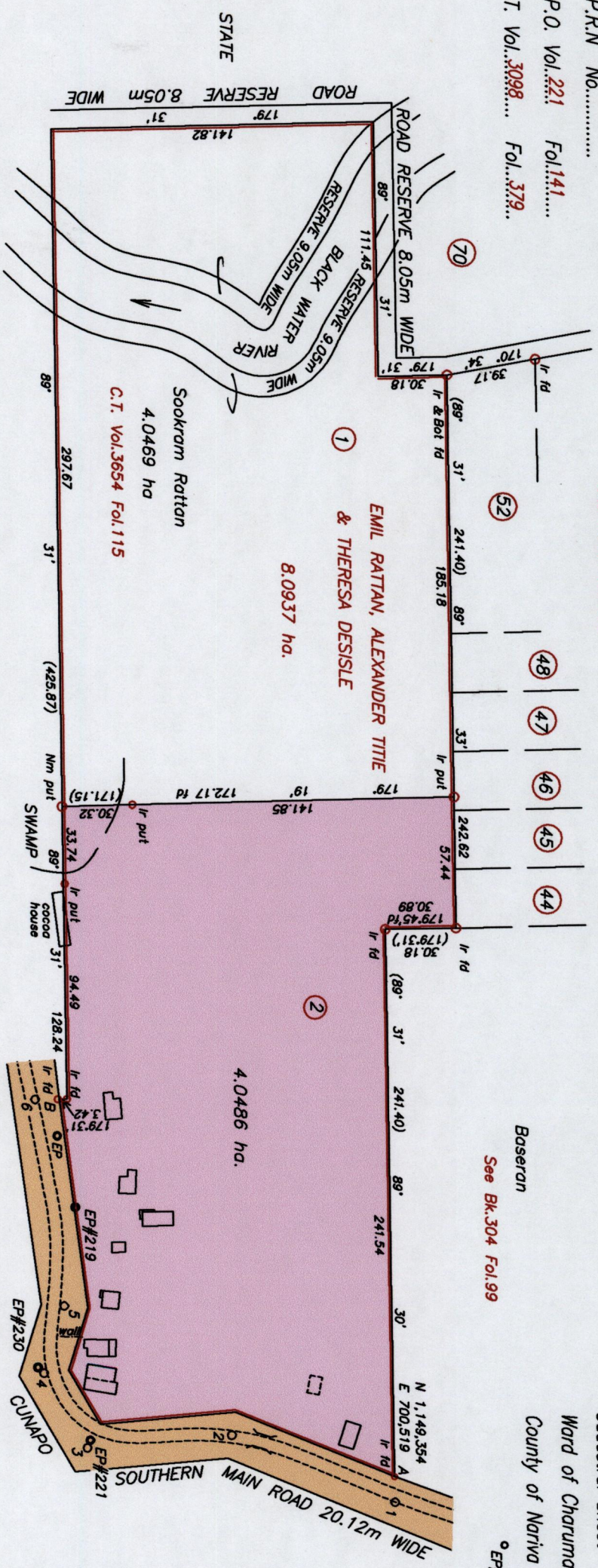
164

1427

U.P.R.N No.....
R.P.O. Vol. 221 Fol. 141
C.T. Vol. 3098 Fol. 379

Ablack Settlement
See PLAN K.D. 28

Cadastral Sheet (E.16 G.) 45E
Ward of Charuma
County of Nariva
2/0



Approved: *[Signature]*
Director of Surveys
2008/11/25

○ Denotes Iron put unless otherwise stated

Bearings are U.T.M. Grid based on Solar Observations
Note: To obtain Cassini bearings add 18 minutes
Plan of a Parcel of land coloured pink in the Ward of Charuma
Containing four point zero four eight six hectares
Surveyed by me, with due authority in September 2008

In accordance with Regulation 25 (1) of the Land Surveyors' Regulations 1998 I certify that this plan is correct.

Checked by: *[Signature]*
Entered on:

Trinidad and Tobago Land Surveyor: *[Signature]* 2008

SCALE 1/2500
Distances are in metres
Co-ordinate are based on GPS finding
WGS 84 U.T.M. Zone 20
-/+ 2.00m



See Bk. 304 Fol. 38
S.O.# 1080/08

A-1	89° 31'	11.27
1-2	203° 10'	77.65
2-3	175° 37'	63.77
3-4	240° 31'	38.42
4-5	287° 18'	30.98
5-6	262° 24'	92.13
6-B	359° 45'	10.62

