

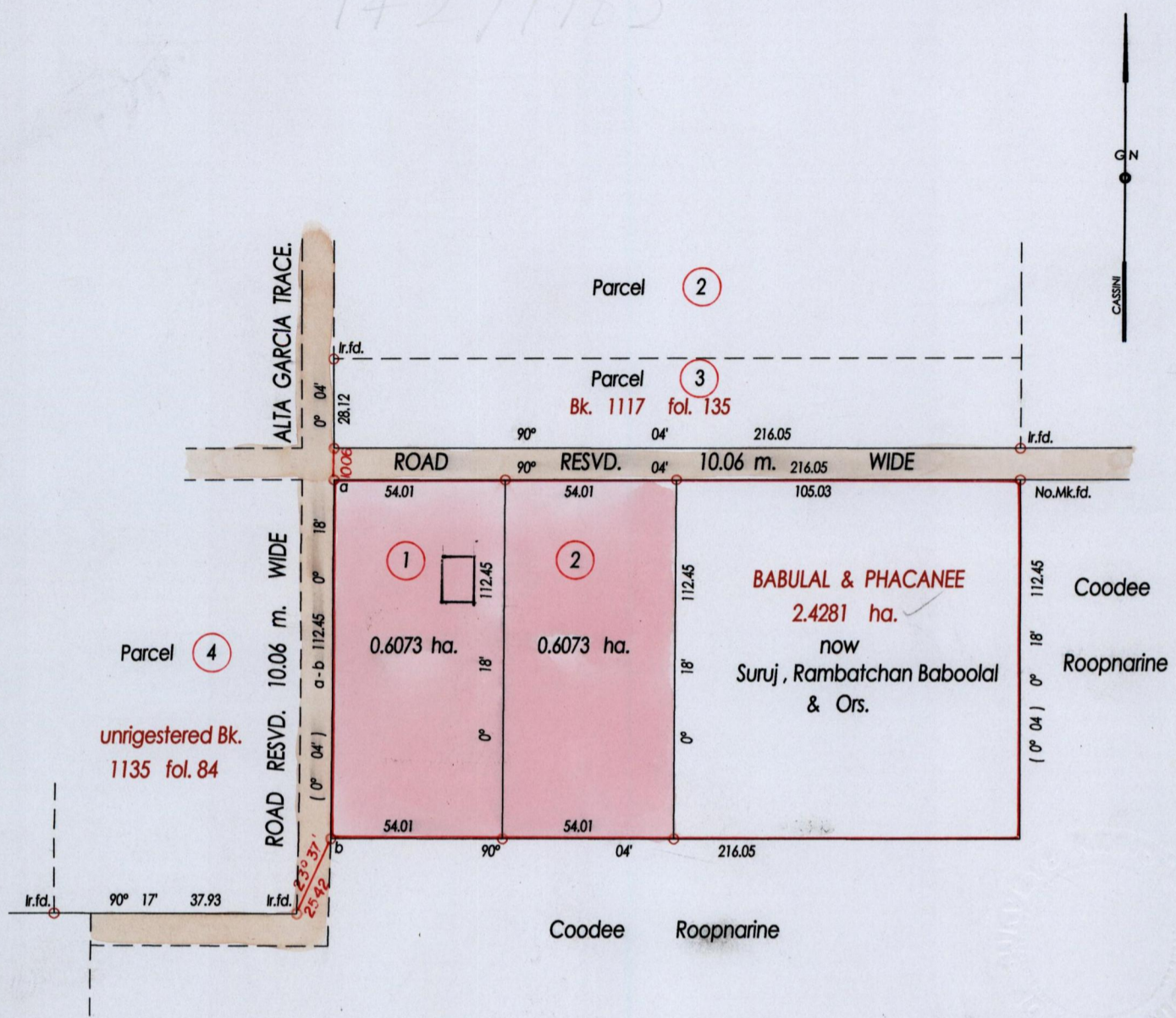
1427

162

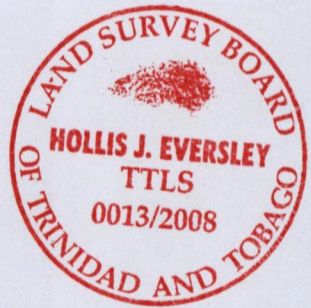
R. P. O. Vol. 159 fol. 387  
C. T. Vol. 4829 fol. 259

Ward of Siparia  
County of St. Patrick  
Cadastral Sheet G. 12 L. 63 E.  
4/d

1427/162



b=N. 1124336 E. 666432  
U.T.M. ZONE 20 Naparima  
Hand Held G.P.S.



Bk. 477 fol. 124

Approved *[Signature]*  
Director of Surveys  
2008-11-25

o Denotes Iron Put Except Stated Otherwise

SCALE 1 : 2000

Bearings are Cassini Grid based on Solar Observations Distances are in Metres  
PLAN of 2 Parcels of land coloured pink in the Ward of Siparia  
Containing together one point two one four six hectares  
Surveyed by me, with due authority in, Sept. 2008

In accordance with Regulation 25 (1) of the Land Surveyors' Regulations 1998,  
I certify that this plan is correct.

Entered on .....  
Checked by *[Signature]* Trinidad & Tobago Land Surveyor . 10<sup>th</sup> Oct. 2008