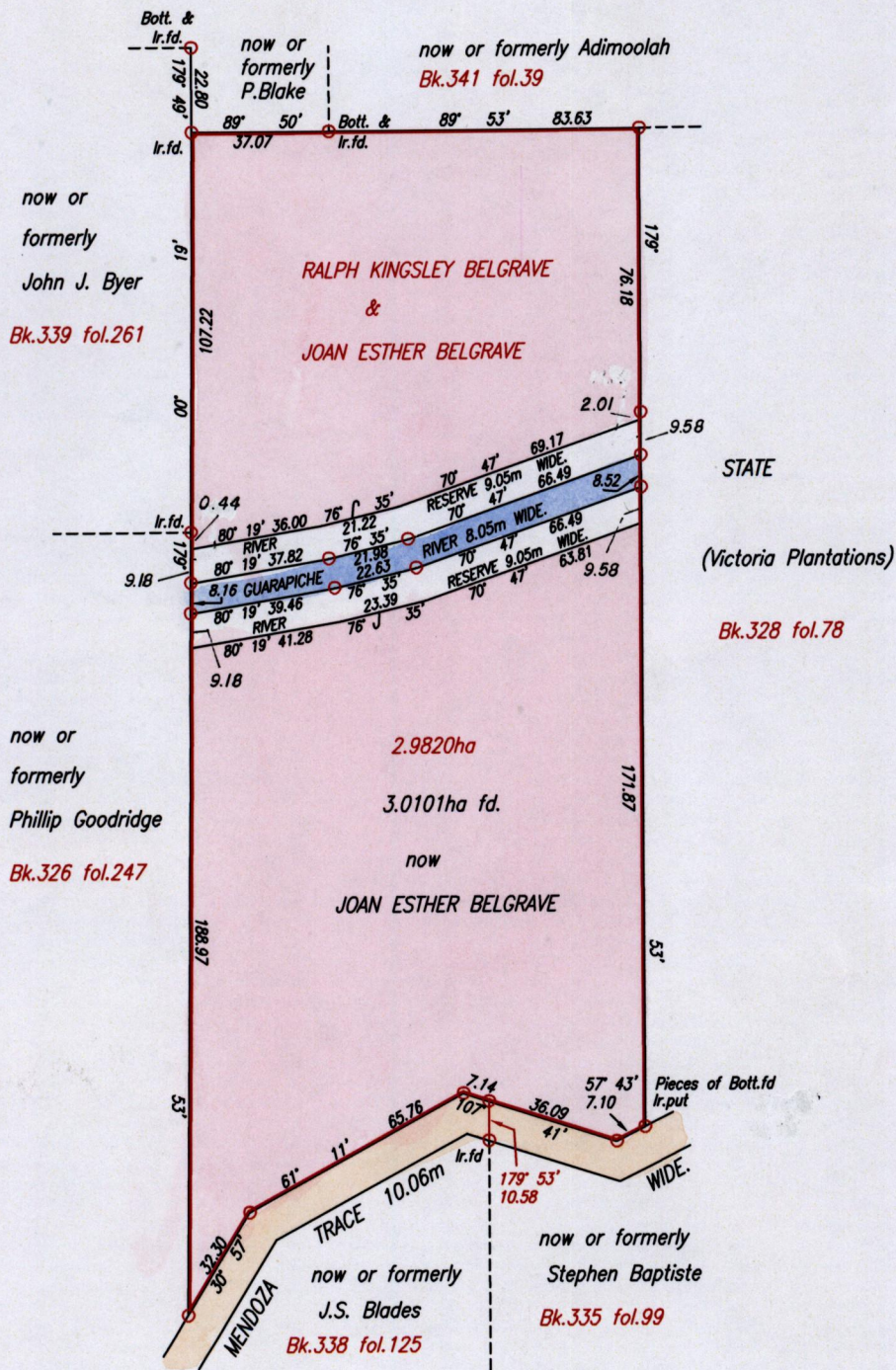
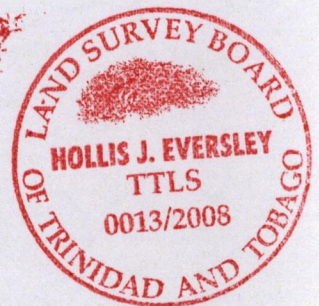


R.P.O. Vol. 68 Fol. 345  
C.T. Vol. 2454 Fol. 543  
Original Bk.335 fol.209

Cadastral Sheet H.1.A 54C  
Ward of Ortoire 4/d  
County of Victoria



Approved *[Signature]*  
Director of Surveys  
2008-11-25



○ Denotes Iron put except otherwise stated.

SCALE 1:2000  
Distances are in Metres

Bearings are Cassini Grid based on Solar Observations.

PLAN of a Parcel of land coloured pink in the Ward of Ortoire  
Containing three point zero one zero one hectares.

Redfined by me, with due authority, in July & August, 2006

In accordance with Regulation 25(1) of the Land Surveyors' Regulations 1998,  
I certify that this plan is correct.

Checked by *[Signature]* *[Signature]*

Entered . . . . . Trinidad & Tobago Land Surveyor . . . . . *[Signature]* . . . . . 2008