

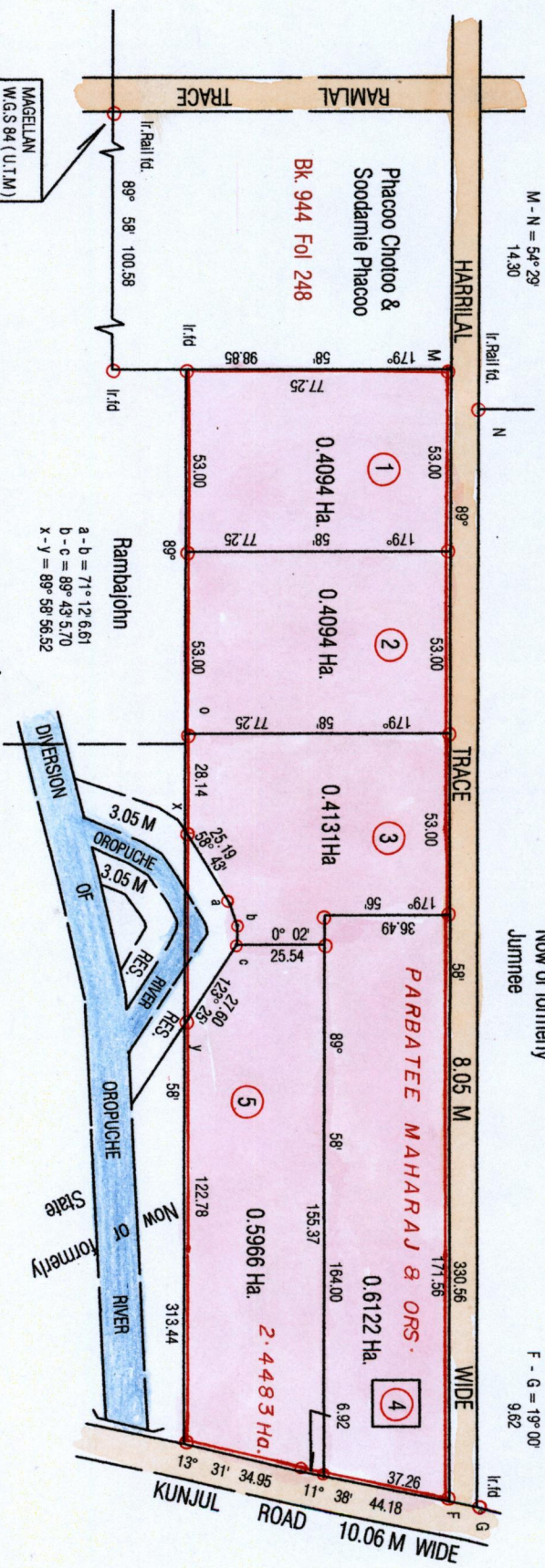
146

R.P.O Vol. 107 Fol 635
C.T Vol. 2915 Fol 439

BK. 339 Fol 17

Ward of Savana Grande
County of Victoria
Cadastral Sheet G 14 D 64 D
2 / b

G N
Cassini



$a - b = 71^{\circ} 12' 6.61$
 $b - c = 89^{\circ} 43' 5.70$
 $x - y = 89^{\circ} 58' 56.52$

Approved *[Signature]*
 Director of Surveyors
 2008-11-17

○ Denotes iron put except otherwise stated

SCALE 1 / 2000

Note: To obtain compass bearings add/subtract minutes Distances are in metres

PLAN of 5 Parcel s of land coloured Pink in the Ward of Savana Grande

Containing two point four four zero seven hectares

Surveyed by me, with due authority, in May 2006

In accordance with Regulation 25 (1) of the Land Surveyors' Regulations, 1998 I certify that this plan is correct.

Checked by *[Signature]* 2008-11-17

Entered

[Signature]
 Trinidad and Tobago Land Surveyor
 2008



1427

LOT	C.T. Vol. & Folio	Names
(1)	Vol. 5158 Fol. 411	Rajendra Maharaj
(2)	Vol. 5158 Fol. 413	Parbatee Maharaj
(3)	C.T. Vol. 5158 Fol. 415	Mohanee Maharaj
(4)	Vol. 5158 Fol. 417	Colowtee Maharaj - Seecharan
(5)	Vol. 5158 Fol. 419	Lilowtee Maharaj.

