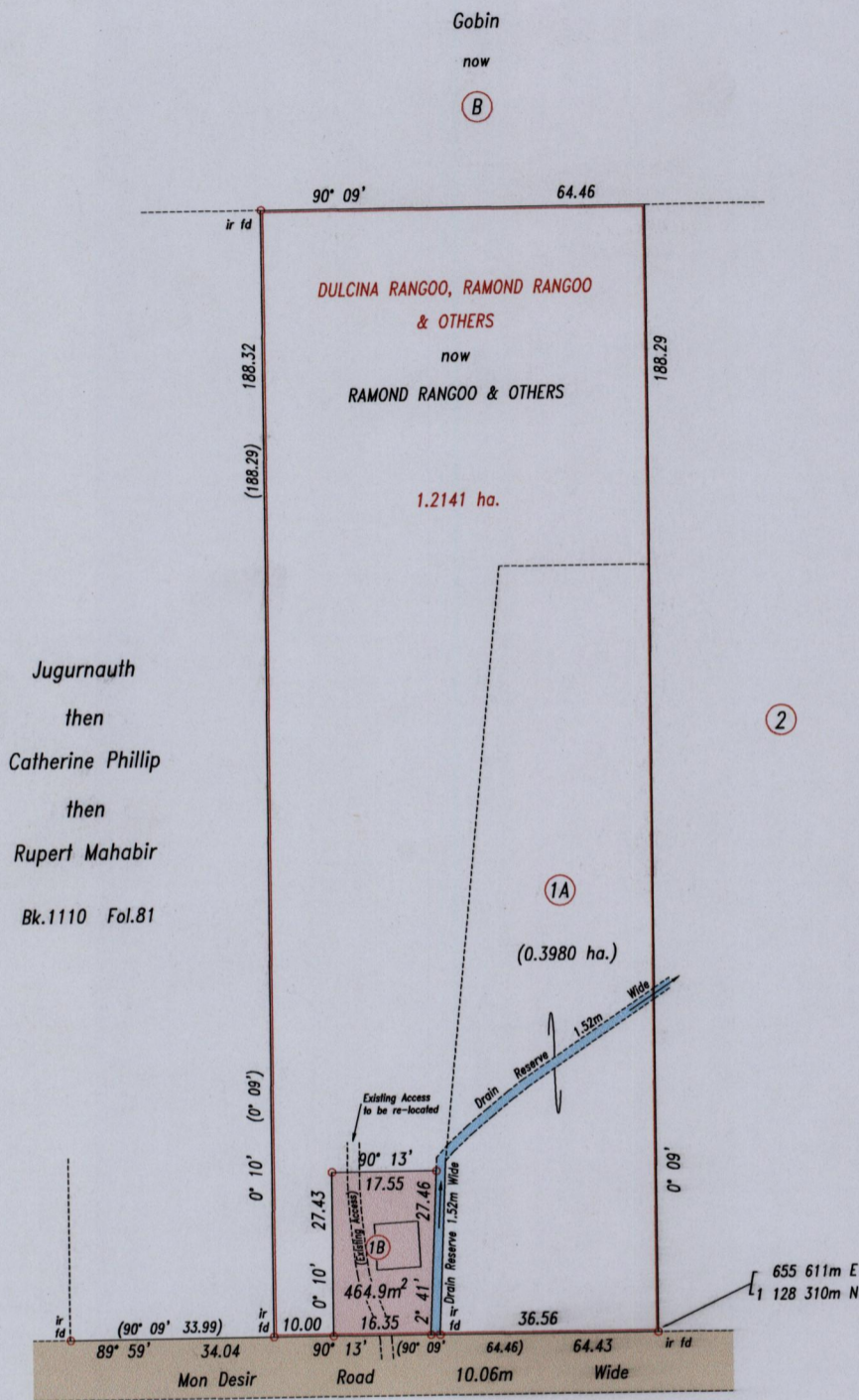


1427

136

R.P.O. Vol. 10 Fol. 393
C.T. Vol. 2965 Fol. 9
U.P.I.N. No.:

Cadastral Sheet G.6.N. 62C/4/c
County of St. Patrick
Ward of La Brea



Jugurnauth
then
Catherine Phillip
then
Rupert Mahabir
Bk.1110 Fol.81

Coordinate Information
Source: GPS (Hand Held)
Error Statement: +/- 5m
Datum: Naparima, UTM (Zone 20)

Reference: Bk.1148 Fol.152

Approved *Lynn Roopchand*
Director of Surveys
2008.11.11

SCALE 1: 1250

Distances are in metres

Denotes iron put except otherwise stated

Bearings are Cassini Grid based on Solar Observations

PLAN of a parcel of land coloured pink in the Ward of La Brea
Containing four hundred and sixty four point nine square metres
Surveyed by me, with due authority, in September 2006

In accordance with Regulation 25(1) of the Land Surveyors' Regulations 1998, I certify that this plan is correct.

Checked by *Lynn 21/11/08*
Entered

L.A. Roper
Trinidad & Tobago Land Surveyor 23/9/2008

