

1427

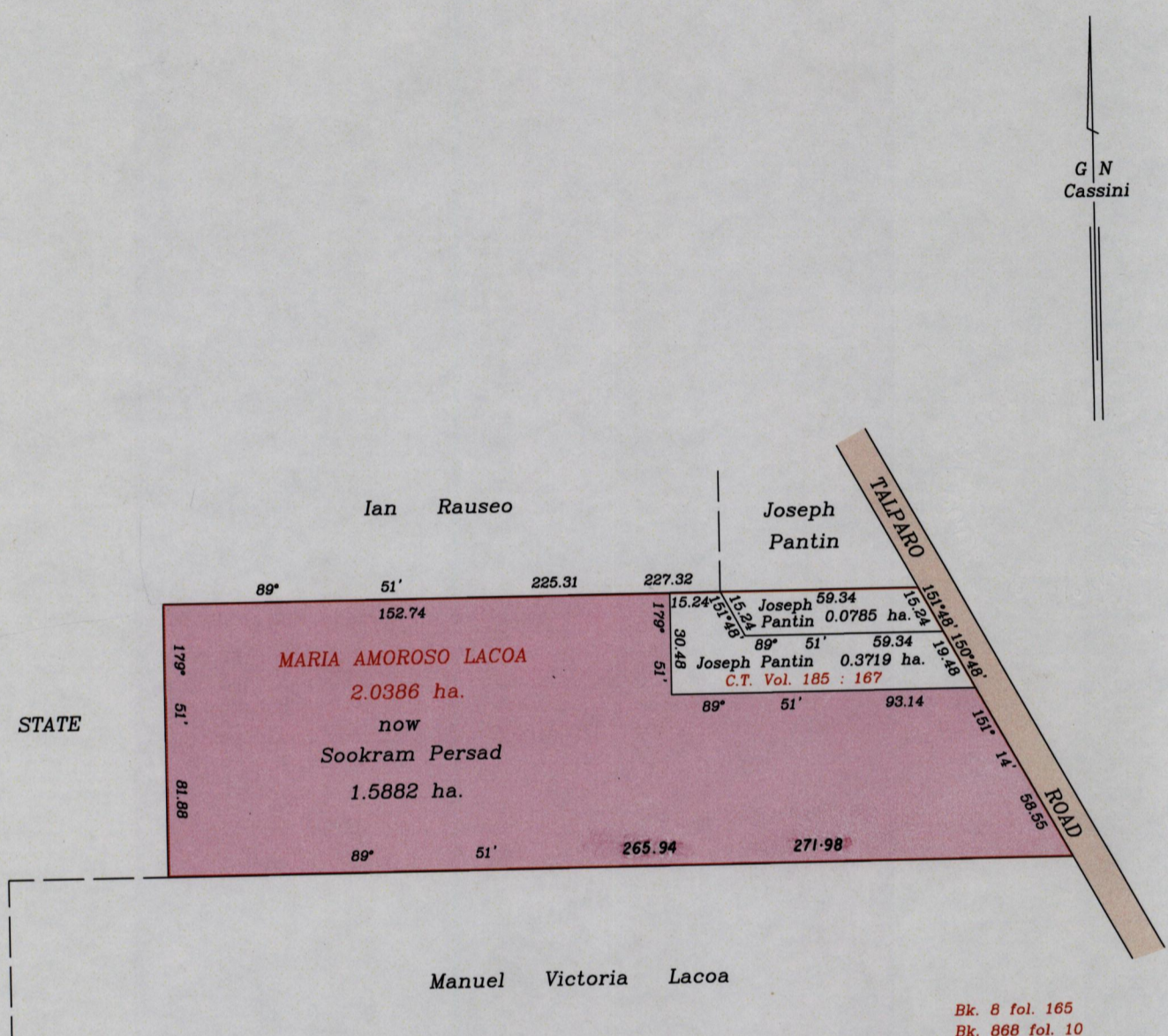
134

REMAINING PORTION

R.P.O. Vol. 17 Fol. 346
C.T. Vol. 70 Fol. 479
C.T. Vol. 71 Fol. 575

Cadastral Sheet D.5.1 ^{24F}/_{4/c}
Ward of San Rafael
County of St. George

G N
Cassini



Bk. 8 fol. 165
Bk. 868 fol. 10

Joseph Pantin 0.0785 ha.
C.T. Vol. 1895 : 117



Approved.....
Winston Ramcharan
Director of Surveys
2008-11-21

SCALE 1 / 2000
Distances are in metres.

To obtain compass bearings add 9 minutes
This is a true copy of a diagram of two point zero three eight six hectares originally granted to MARIA AMOROSO LACOA, shewing a portion coloured pink and containing one point five eight eight two hectares being the remainder after two previous transfer of other portions of the land, the dividing lines having been run. In accordance with Regulation 25 (1) of the Land Surveyors' Regulations 1998, I certify that this plan is correct.

Checked by.....
Entered on

Winston Ramcharan
Trinidad & Tobago Land Surveyor 5th November 2008