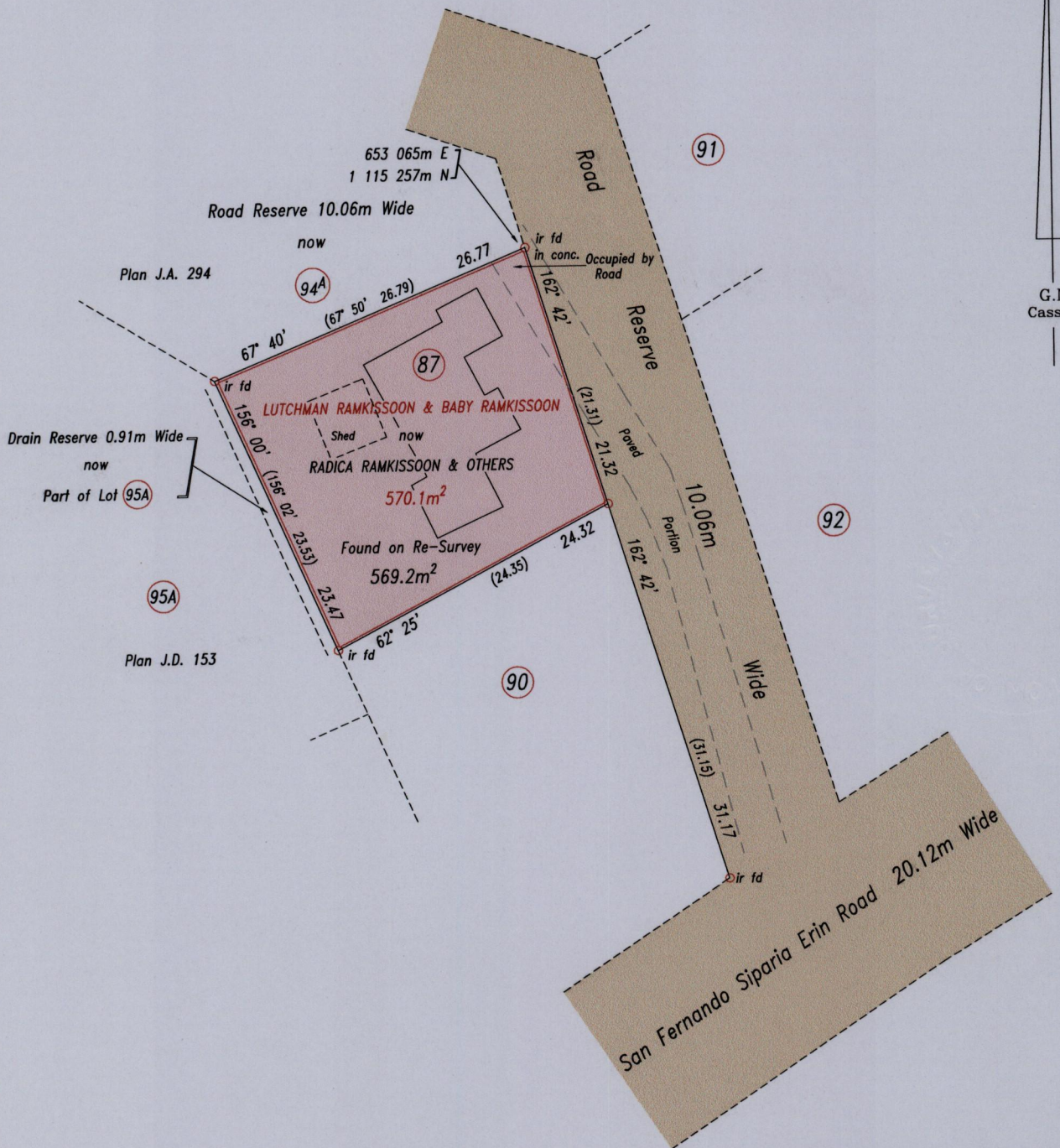


R.P.O. Vol. Fol.  
C.T. Vol. 4272 Fol. 171  
U.P.I.N. No.:

Ward of Erin  
County of St. Patrick  
Cadastral Sheet G.21.A. 72F  
1/a

Parcel Address: #1232A Lorenzotte Village, Palo Seco.



Coordinate Data
Source: GPS (Hand Held)
Error Statement: +/- 5m
Datum: Naparima, UTM (Zone 20).

Approved  
  
 Director of Surveys  
 2008-11-11

Reference: Plan P.C. 152

SCALE 1: 500

Distances are in metres

○ Denotes iron put except otherwise stated

Bearings are Cassini Grid based on Solar Observations

PLAN of a parcel of land coloured pink in the Ward of Erin  
Containing five hundred and sixty nine point two square metres  
Surveyed by me, with due authority, in October 2008

In accordance with Regulation 25(1) of the Land Surveyors' Regulations 1998, I certify that this plan is correct.

Checked by   
 Entered .....

Trinidad & Tobago Land Surveyor 22/10/2008

