

R.P.O. Vol. 235 Fol. 273

Ward of Siparia

C.T. Vol. 1056 Fol. 199

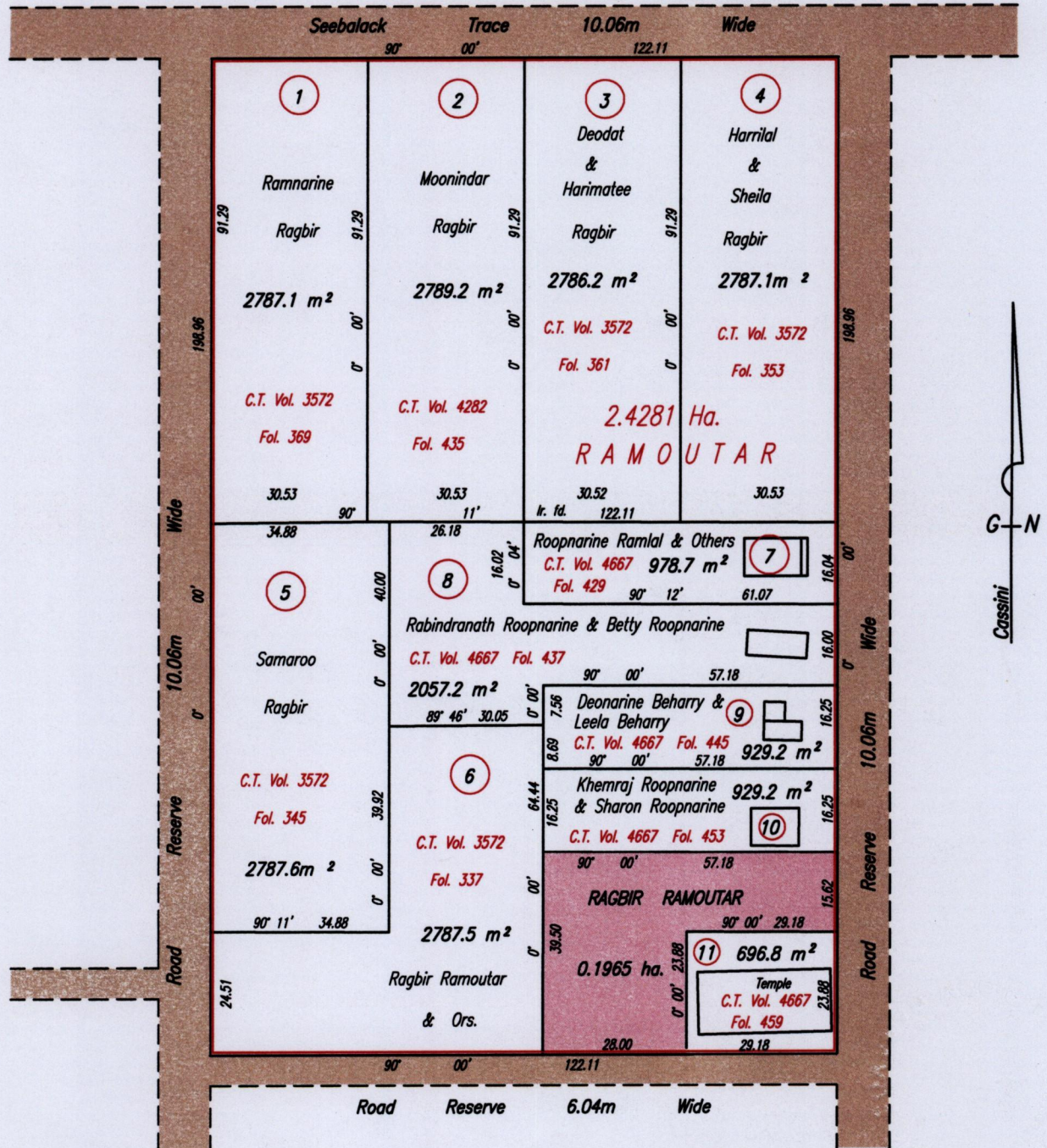
County of St. Patrick

Bk. 1211 fol. 28

Cadastral Sheet G.18.D. 73C
2/b

Bk. 1211 fol. 32

Bk. 1195 fol. 139



Approved *[Signature]*
 Director of Surveys.
 2008-11-7

SCALE 1:1250

Bearings are Cassini Grid based on Solar Observations.

Distances are in Metres.

This is a true copy of a diagram of two point four two eight one hectares originally transferred to RAMOUTAR, showing a portion coloured pink and containing Zero point One Nine Six Five hectare being the remainder after eleven previous transfers of another portion of land.

In accordance with regulation 25(1) of the Land Surveyors' Regulations 1998, I certify that this plan is correct.

Checked by *[Signature]*
 Entered

[Signature]
 Trinidad & Tobago Land Surveyor 28th January 2008

