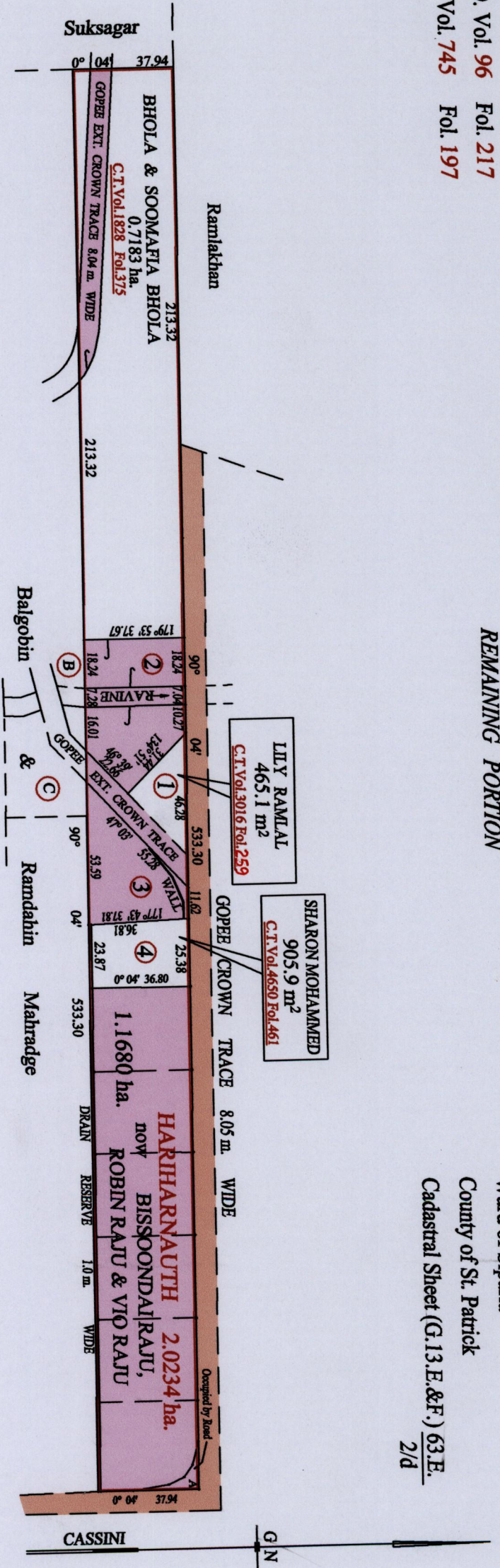


REMAINING PORTION

Ward of Siparia
County of St. Patrick
Cadastral Sheet (G.13.E.&F.) 63.E.
2/d



1427

Approved *[Signature]*
Director of Surveys
2008-00-17

SCALE: 1:2000

Vide Bk.1157 fol.117
Vide Bk.1010 fol.168

Note: Bearings are cassini grid based on solar observations Distances are in metres
This is a true copy of a diagram of two point zero two three four hectares, originally transferred to Hariharauth, shewing a portion coloured pink and containing one point one six eight zero hectares being the remainder after three (3) previous transfers of other portions of the land. In accordance with Regulation 25 (1) of the Land Surveyors' Regulations 1998, I certify that this plan is correct.

Checked by *[Signature]*

Entered on Trinidad & Tobago Land Surveyor 2012 2007

