

1427

10

REMAINING PORTION

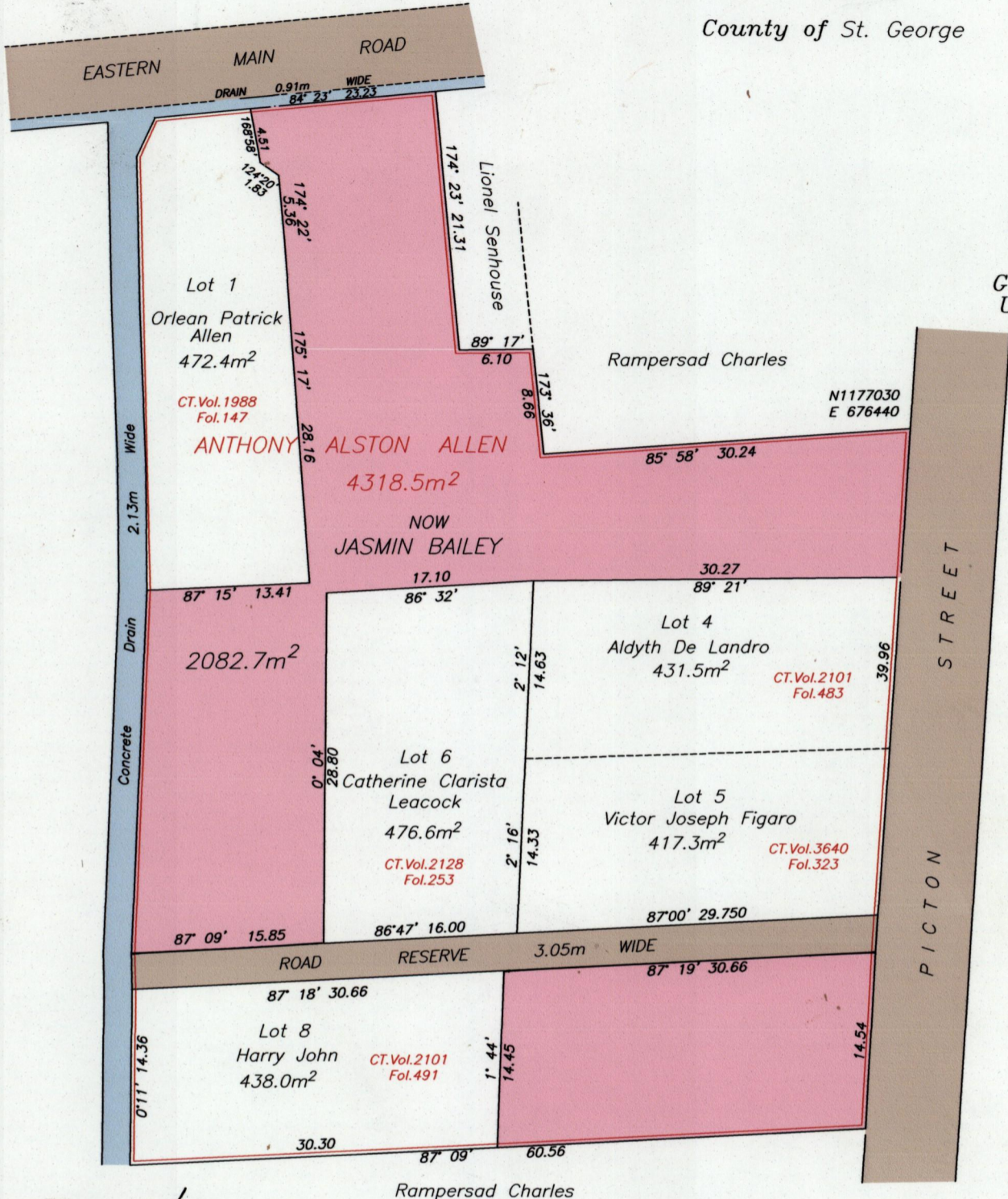
C.T. Vol. 1549 Fol. 113

1427/10

Cadastral Sheet B.18.N. 24A
1/b

Ward of Tacarigua

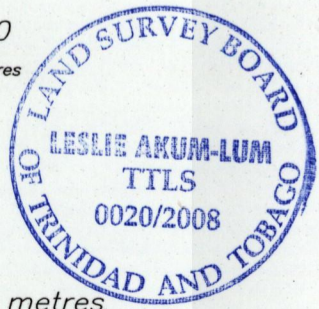
County of St. George



Approved: *[Signature]*
 Director of Surveys
 2008.8.25

Co-ordinates are UTM zone 20 Naparima Datum +/-5m scaled from L.&S. 1/10000 sheet.
 Bearings are U.T.M. grid based on Magnetic Needle
 Note: To obtain compass bearings add 22 minutes.

See Bk.1375/19
 See Plan R.A.57
 SCALE 1/500
 Distances are in metres



This is a true copy of a diagram of four three one eight point five square metres originally granted to Anthony Alston Allen, shewing a portion coloured pink and containing two zero eight two point seven square metres being the remainder after 4 previous transfers of other portions of the land. In accordance with 25 (1) of the Land Surveyors' Regulations 1998, I certify that this plan is correct.

Checked by: *[Signature]*
 Entered: Trinidad & Tobago Land Surveyor *[Signature]* 16th March 2008