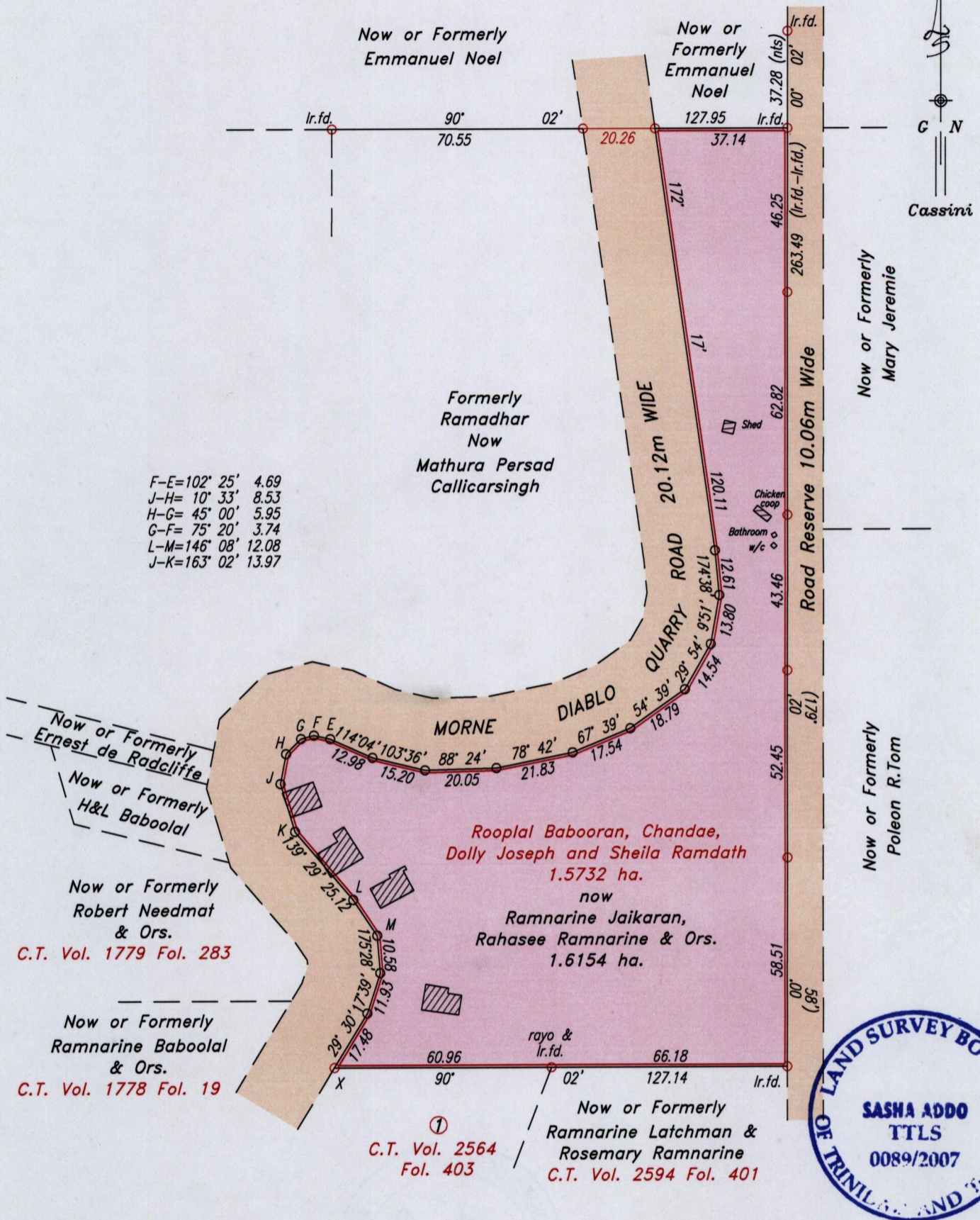


R.P.O Vol. 164 Fol. 517
C.T. Vol. 1792 Fol. 207

Ward of Siparia
County of St. Partick
Cadastral Sheet (G.18.F) 73C
3/a



Approved.....
 Director of Surveys
 2008-1-23

See Bk. 753 Fol 327
 Bk. 1003 Fol 182
 Bk. 980 Fol 154
 Bk. 1124 Fol 124
 SCALE 1:1500

○ Denotes Iron put except otherwise stated.

Note: Bearings are Cassini Grid based on solar observations. Distances are in metres.
 To obtain compass bearing subtract 02 minutes.

Plan of a Parcel of land coloured pink in the Ward of Siparia
 Containing one point six one five four hectares
 Surveyed by me, with due authority, in January 2006.

In accordance with Regulation 25(1) of the Land Surveyors' Regulations 1998,
 I certify that this plan is correct.

Checked by.....
 15/1/08

[Signature]

Entered
 Trinidad & Tobago Land Surveyor 19 Nov. 2007.