

1414

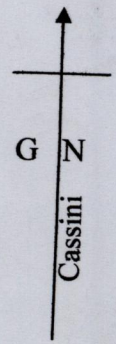
1414/5

95

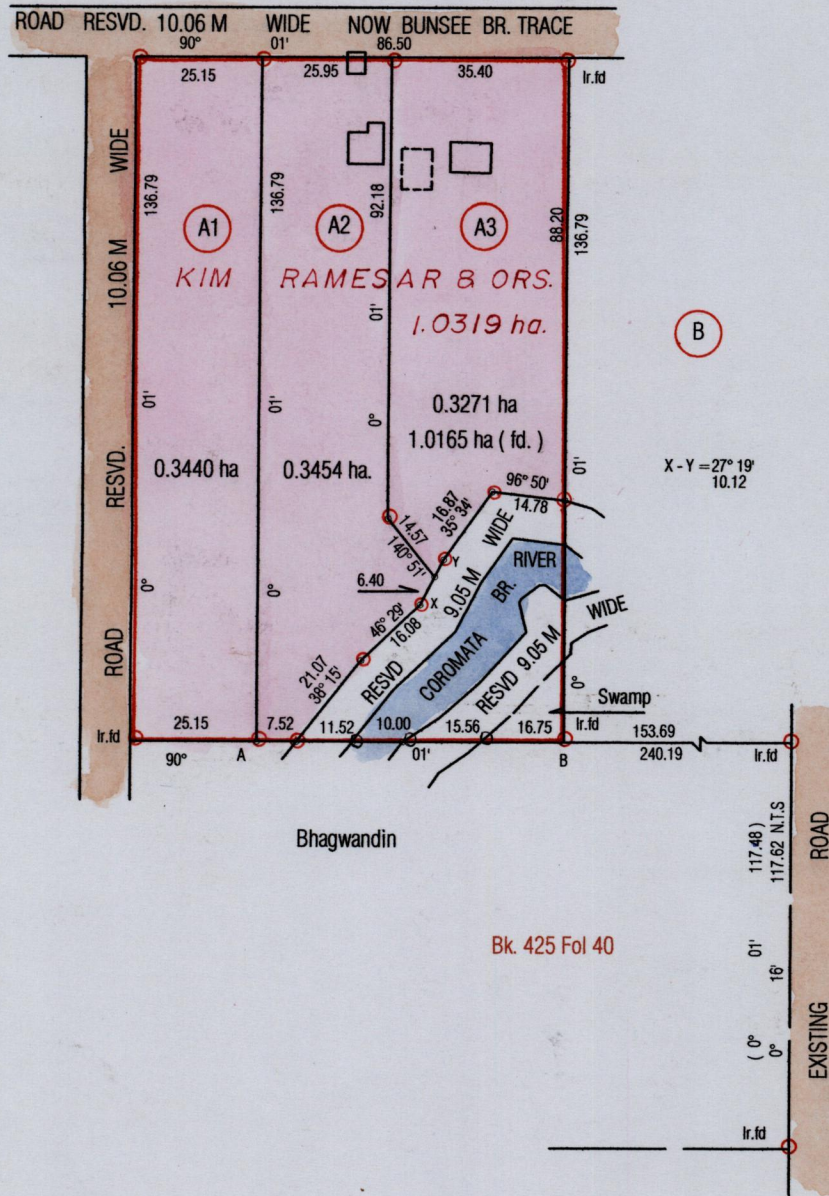
R.P.O Vol. 260 Fol 465

C.T Vol. 2413 Fol. 157

Ward of Siparia  
County of st Patrick  
Cadastral Sheet G 18L  $\frac{73 C}{4/a}$



Bk. 1103 Fol 28



Approved...  
Director of Surveys  
2008.1.23

○ Denotes iron put except otherwise stated  
Bearings are Cassini Grid based on Solar Obs  
Note: To obtain compass bearings add/subtract minutes Distances are in metres

SCALE : 1/ 1500

PLAN of 3 Parcels of land coloured pink in the Ward of Siparia

.Containing together one point zero one six five hectares

Surveyed by me, with due authority, in April 2005

In accordance with Regulation 25 (1) of the Land Surveyors' Regulations 1998,

I certify that this plan is correct.

Checked by... 2008.1.17

Entered ..... Trinidad and Tobago Land Surveyor... 25 Feb 2007... 2007

