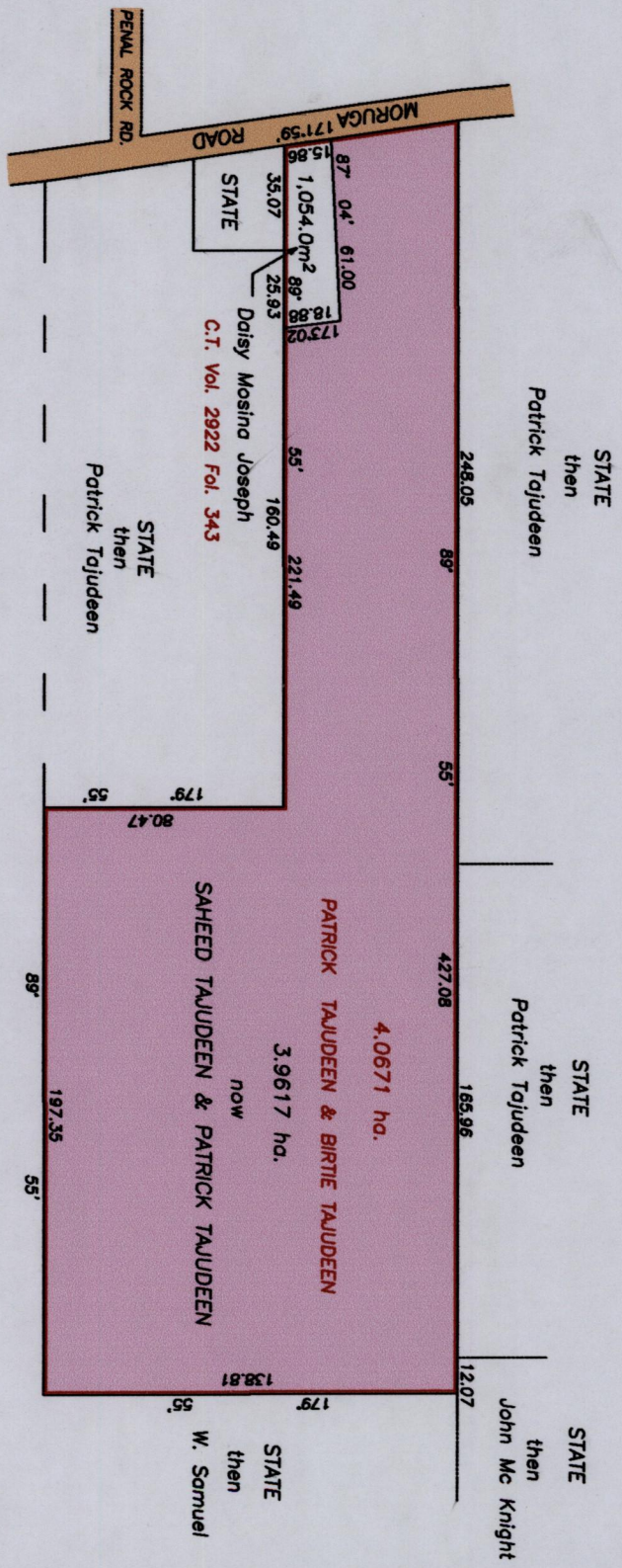


1414

U.P.R.N. NO.
R.P.O. Vol. 130 Fol. 243
C.T. Vol. 1490 Fol. 379

REMAINING PORTION

Cadastral Sheet (G.20.H&G) 74 C
Ward of Moruga
County of Victoria
1/c



See Bk. 317 Fol. 151
Bk. 343 Fol. 6
Bk. 1141 Fol. 166

Approved by *[Signature]*
Director of Surveys

Note : To obtain compass bearings add 05 minutes

This is a true copy of a diagram of four point zero six seven one hectares Originally granted to PATRICK TAUDEEN & BIRTIE TAUDEEN showing a portion coloured pink and containing three point nine six one seven hectares being the remainder after ONE previous transfer of another portion of land.

In accordance with Regulation 25 (1) of the Land Surveyors' Regulations 1998,
I certify that this plan is correct.

Checked by *[Signature]*

Entered on..... Trinidad and Tobago Land Surveyor..... 2007



SCALE 1/2500
Distances are in metres

1414