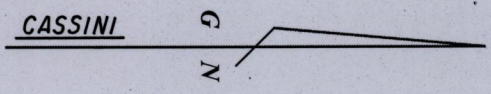
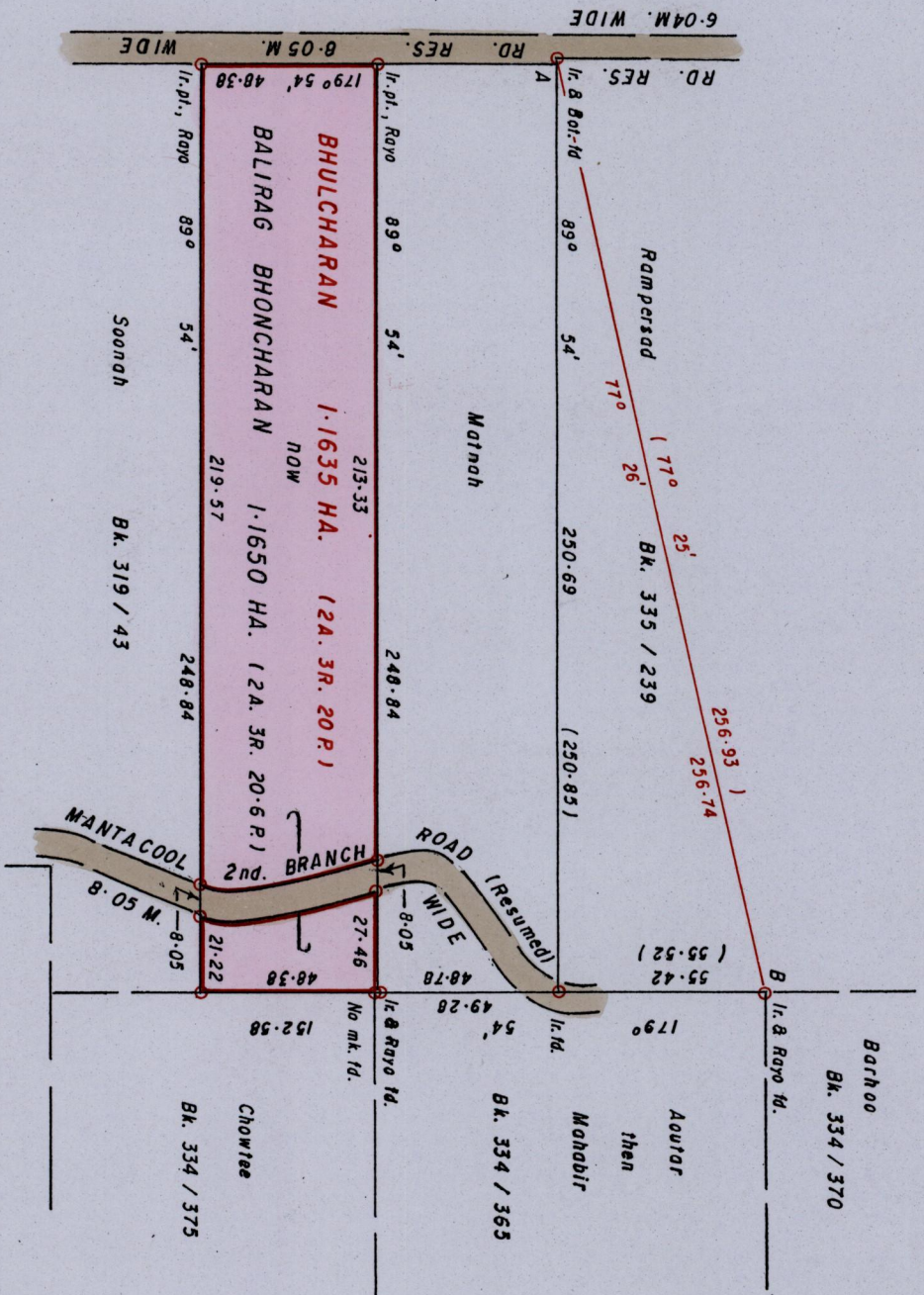


R.P.O. Vol 74 Fol 119
C.T. Vol 2386 Fol 19

Refs. Bk. 333 / 62
Bk. 711 / 216
Bk. 717 / 140
Plan K.E. 17



Ward of Ortoire
County of Victoria
Cadastral Sheet 54F, H.I.M.
4/c
GEORGE VILLAGE
TABLELAND

Approved *[Signature]*
Director of Surveys 2007.12.18

SCALE 1 / 2000
Distances are in METRES

○ Denotes Iron pui unless otherwise stated

Bearings are Cassini Grid based on Solar Obs.
PLAN of a Parcel of land coloured PINK in the Ward of Ortoire
Containing one point one six five zero hectares
Surveyed by me, with due authority, in September 2007 for Balirag Bhoncharan
In accordance with Regulation 25 (1) of the Land Surveyors' Regulations 1998. I certify that this plan is correct.
Checked by *[Signature]* 29/11/07
Entered
Trinidad and Tobago Land Surveyor 2007.