

1414

56

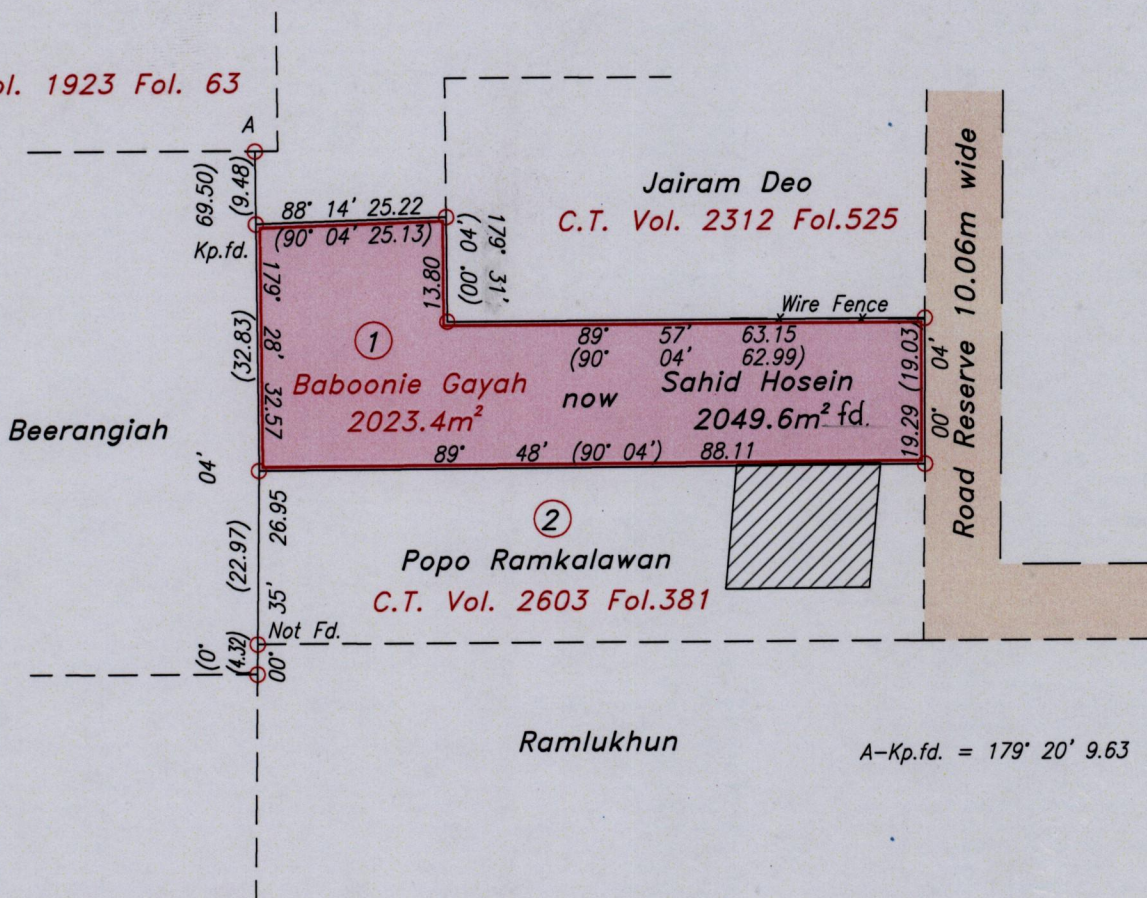
R.P.O Vol. 165 Fol. 153
C.T. Vol. 2603 Fol. 375

Ward of Siparia
County of St. Patrick
Cadastral Sheet (G.12.H). $\frac{63E}{2/c}$



GAYAH & JAGDAIAH & JAIRAM DEO

C.T. Vol. 1923 Fol. 63



Approved.....
Director of Surveys

Org. in Bk. 400 Fol. 217
Ref. Bk. 1014 Fol. 220
Bk. 1211 Fol. 11
SCALE 1:1000

○ Denotes Iron found except otherwise stated.

Note: Bearings are Cassini grid based on solar observations.

Distances are in metres.

To obtain compass bearing subtract 04 minutes.

Plan of a Parcel of land coloured pink in the Ward of Siparia.

Containing two thousand and forty nine point six square metres.

Surveyed by me, with due authority, in May 2007.

In accordance with Regulation 25(1) of the Land Surveyors' Regulations, 1998,

I certify that this plan is correct.

Checked by.....

.....
Trinidad & Tobago Land Surveyor

Entered



05/09/2007