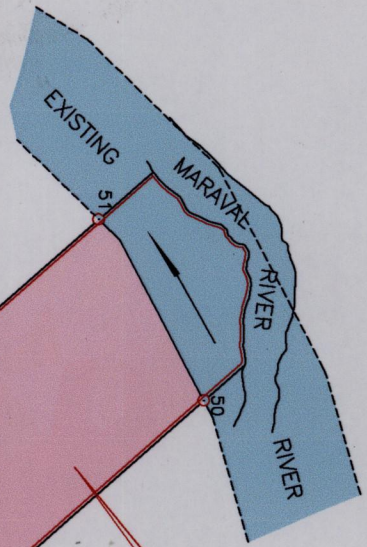


The Mayor, Aldermen and Councillors Citizens of the City of Port of Spain

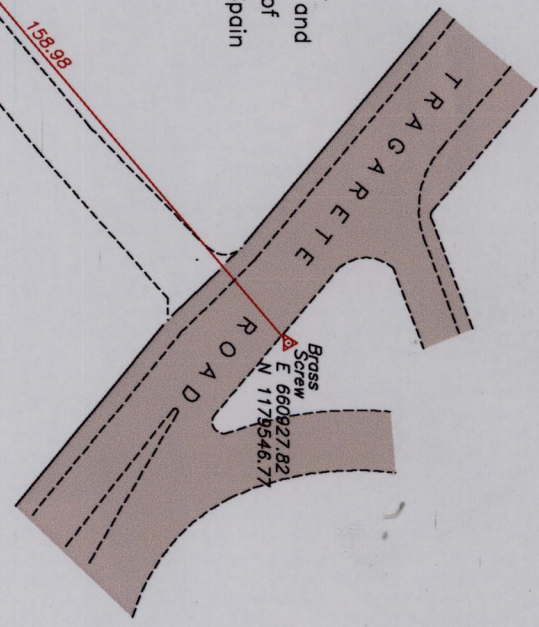
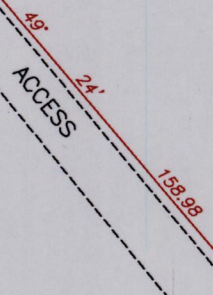


The Mayor, Aldermen and citizens of the city of Port of Spain

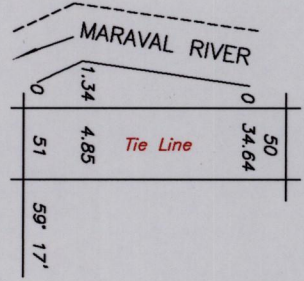
The Mayor, Aldermen and Councillors Citizens of the City of Port of Spain

The Mayor, Aldermen and Councillors Citizens of the City of Port of Spain

State then



Cadastral Sheet 13D A20E
City of Port of Spain
County of St. George



U.T.M.

Note: Denotes Ir.pt. except otherwise stated
To obtain Cassini bearings add 18 minutes

Approved: *[Signature]*
Director of Surveys
2007.11.14

PLAN of a Parcel of land coloured Pink in the City of Port of Spain

Containing zero point three nine three seven hectares

Surveyed by me with due authority in August 2004

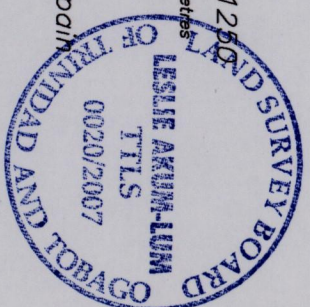
In accordance with Regulation 25 (1) of the Land Surveyors' Regulations 1998,

I certify that this plan is correct.

Checked by: *[Signature]*

[Signature]

Entered..... Trinidad & Tobago Land Surveyor *[Signature]* 2007



SCALE 1/1250
Distances are in metres