

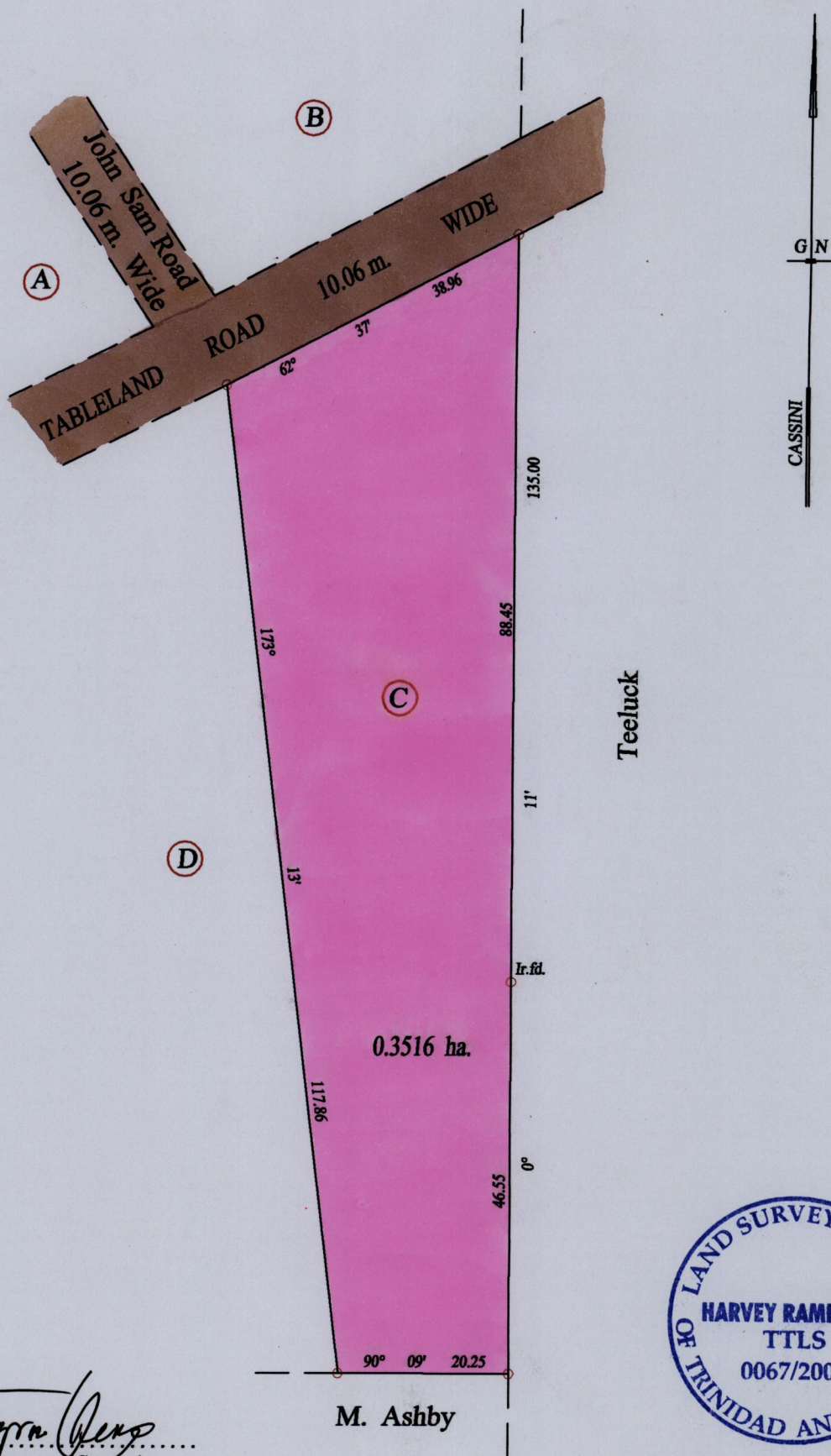
1414

R.P.O. Vol. 15 Fol. 69  
C.T. Vol. 683 Fol. 116<sup>a</sup>

1414/17

47

Ward of Ortoire  
County of Victoria  
Cadastral Sheet (H 1 E)  $\frac{54.F}{2/a}$



Approved *[Signature]*  
Director of Surveys  
2007.11.14

M. Ashby



○ Denotes Iron put except stated otherwise.

SCALE : 1:750

Note: Bearings are cassini grid based on solar observations Distances are in metres

PLAN of a Parcel of land coloured pink in the Ward of Ortoire

Containing zero point three five one six hectare

Surveyed by me, with due authority, in June 2005

In accordance with Regulation 25 (1) of the Land Surveyors' Regulations 1998,

I certify that this plan is correct.

Checked by *[Signature]* 30/10/07

Entered on ..... Trinidad & Tobago Land Surveyor ... 3:10 ..... 2007