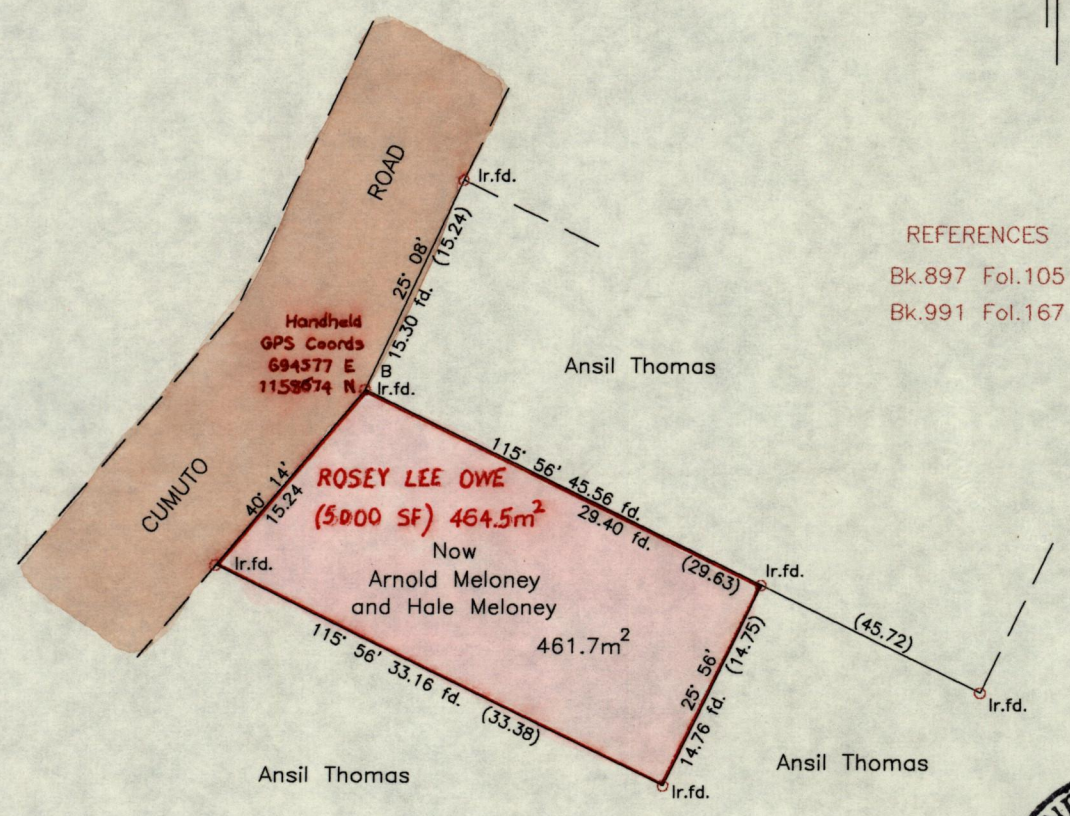
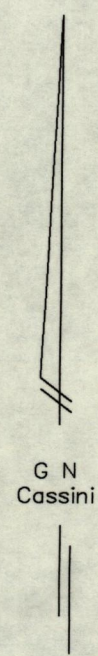
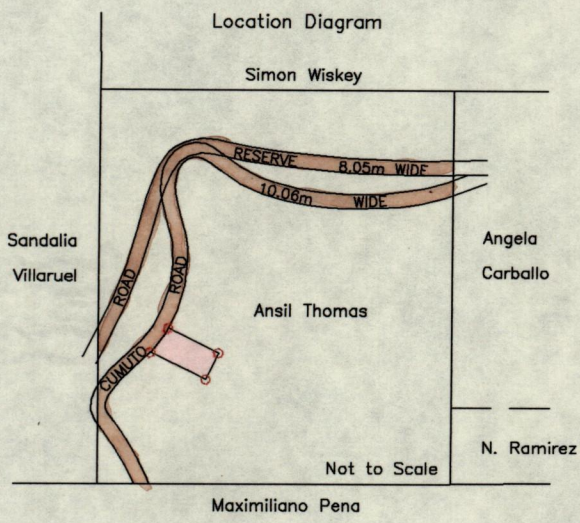


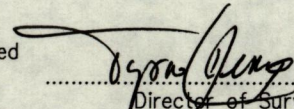
1414

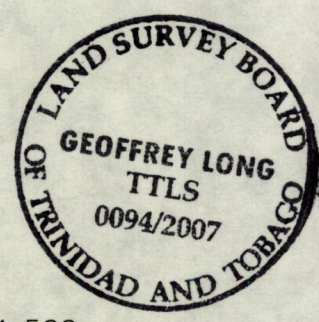
333

R.P.O. Vol. 44 Fol. 255
C.T. Vol.1211 Fol.187

35D
Cadastral Sheet 2\c (D.10.P.)
Ward of Tamana
County of St. Andrew



Approved 
Director of Surveys
2007.09.28



Notes: Bearings are Cassini Grid based on Solar Observations.
Coordinates obtained using handheld GPS (UTM 20, Naparima ± 5.0m)

SCALE 1:500
Distances are in metres

PLAN of a parcel of land coloured pink in the Ward of Tamana
Containing four hundred and sixty one point seven square metres
Surveyed by me, with due authority, in September 2007
In accordance with regulation 25(1) of The Land Surveyors' Regulations 1998,
I certify that this plan is correct

Checked by mm 17/10/07

Geoffrey Long
Trinidad and Tobago Land Surveyor, 28th September 2007

Entered on

460