

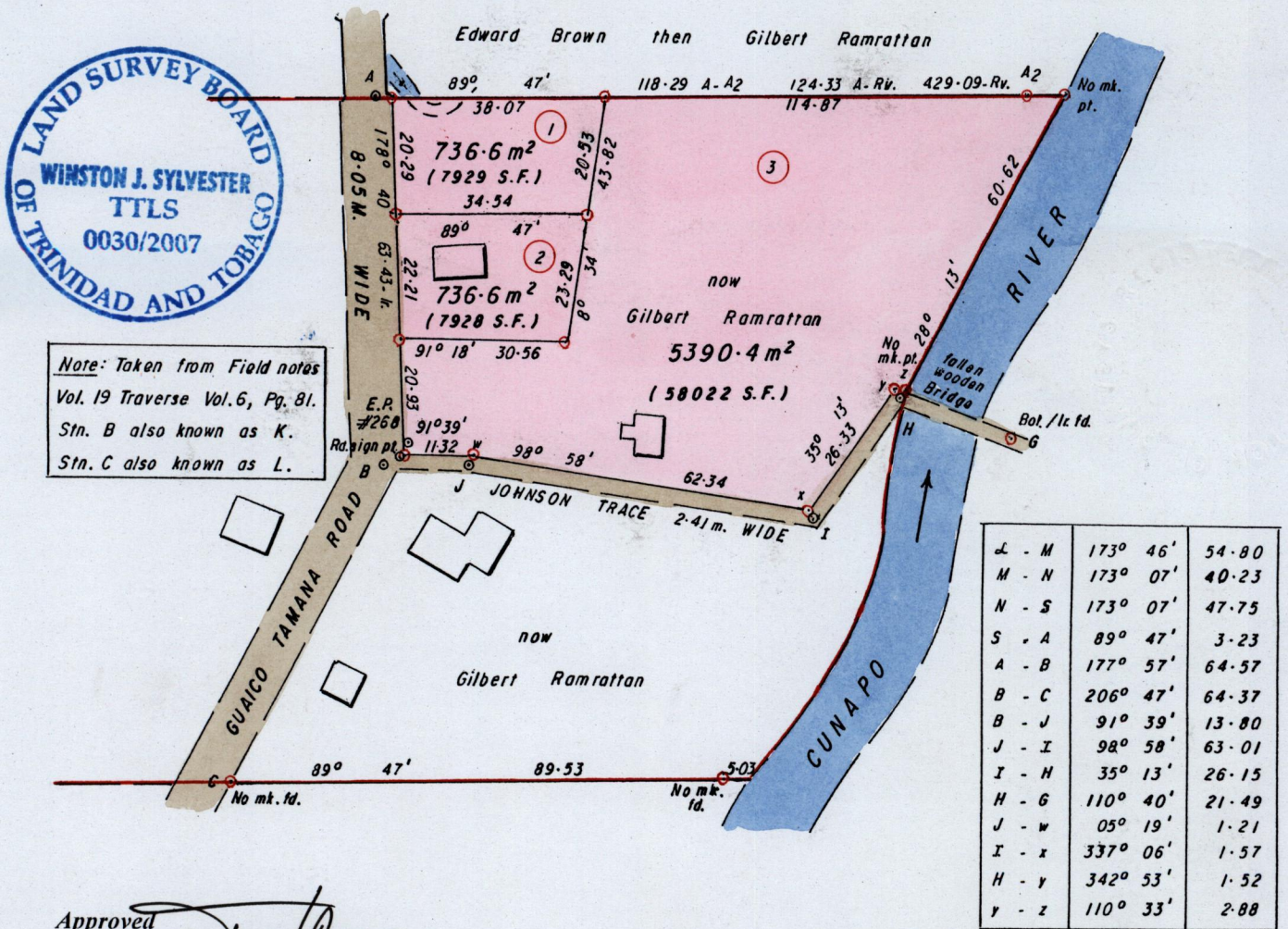
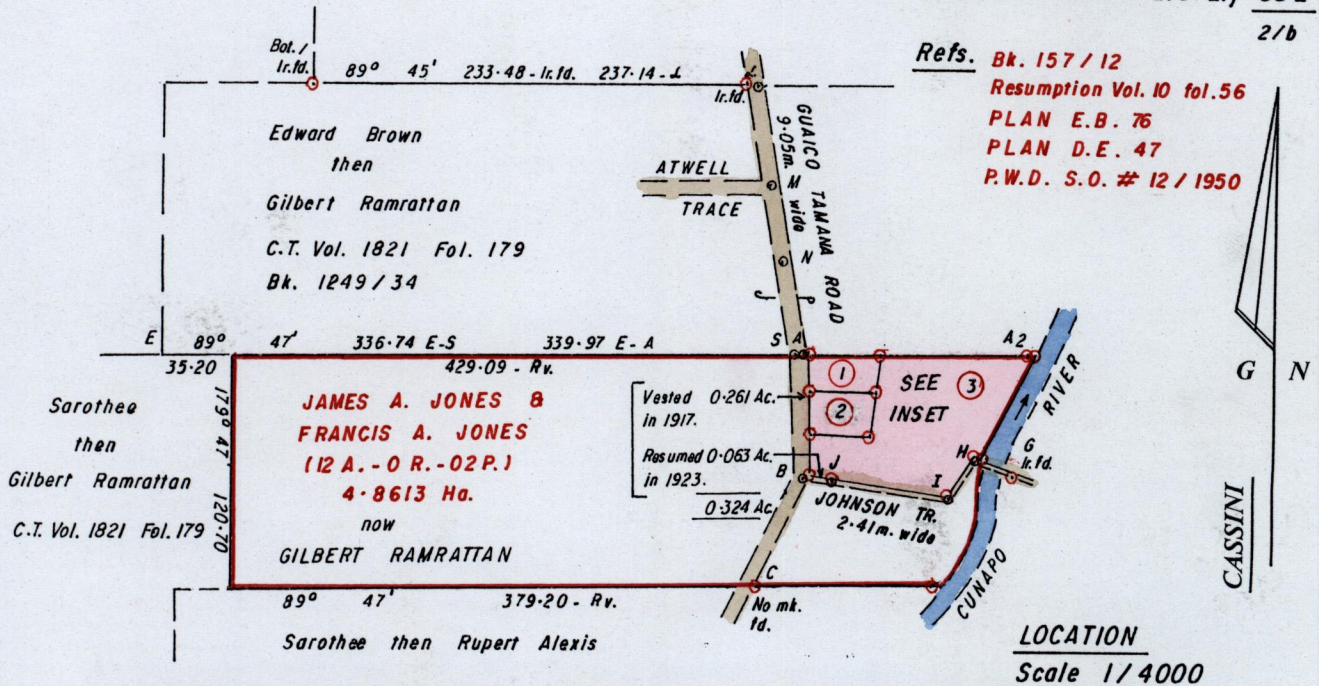
1414

19/4/36

36

R.P.O. Vol. 14 Fol. 581  
C.T. Vol. 995 Fol. 269

Wards of Tamana & Turure  
County of St. Andrew  
Cadastral Sheet E. 6. L., 35 E  
2/b



Approved  
*[Signature]*  
Director of Surveys  
2607.10.22

○ Denotes Iron put unless otherwise stated  
Bearings are Cassini Grid based on Solar Obs.  
SCALE 1 / 1250  
Distances are in METRES

Note: To Obtain compass bearings add/subtract minutes

PLAN of 3 Parcels of land coloured PINK in the Wards of Tamana & Turure  
Containing together six thousand eight hundred and sixty three point six square metres  
Surveyed by me, with due authority, in January 2007  
In accordance with Regulation 25 (1) of the Land Surveyors' Regulations 1998,  
I certify that this plan is correct.

Checked by *[Signature]* 16/10/07

*[Signature]*

Entered ..... Trinidad and Tobago Land Surveyor..... 4-03 ..... 2007.