

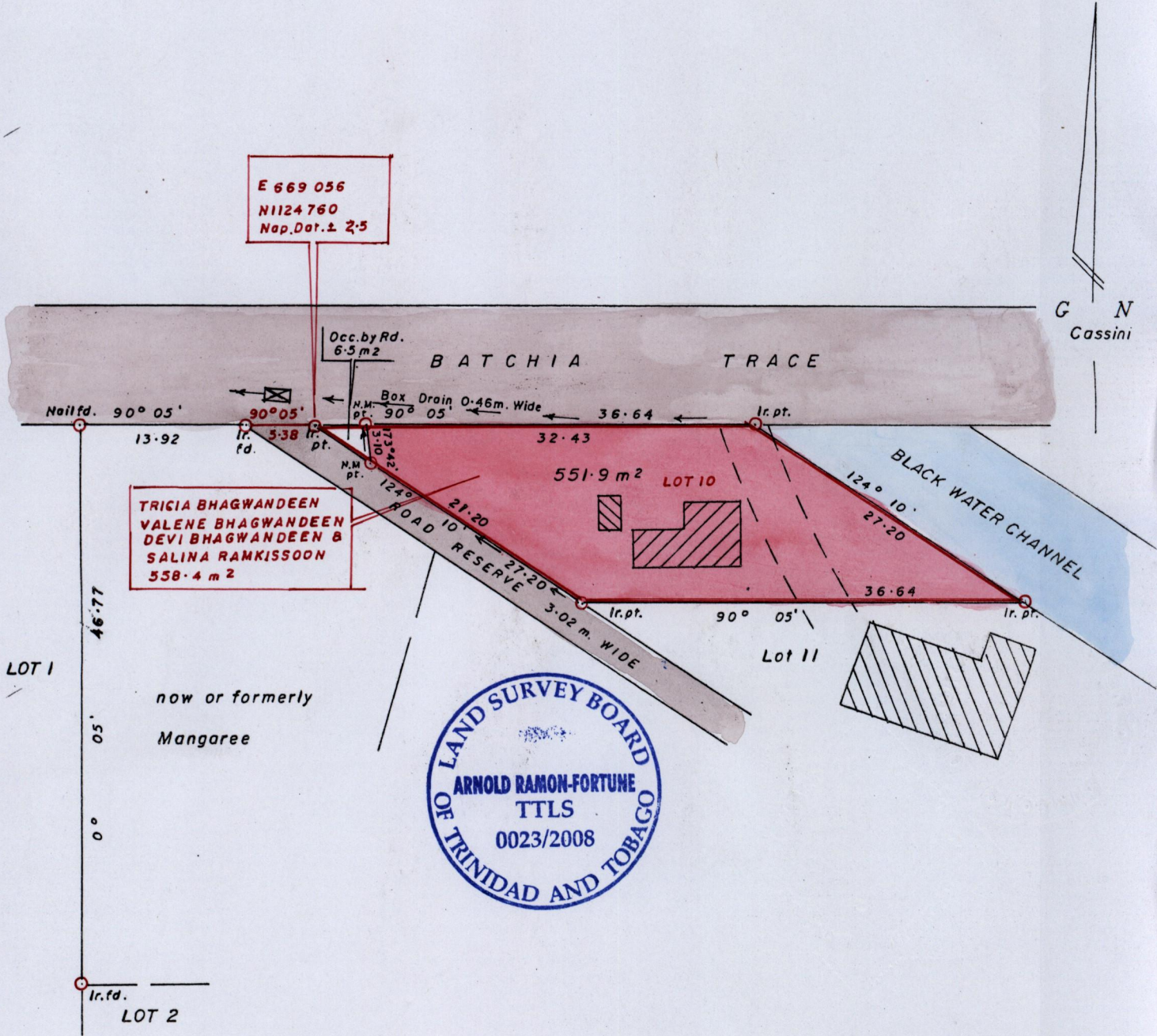
R.P.O. Vol. 75 Fol. 83
C.T. Vol. 4964 Fol. 323

1414

Ward of Siparia
County of St. Patrick

220

Cadastral Sheet G-13-F. 63F
1/a



TRICIA BHAGWANDEEN
VALENE BHAGWANDEEN
DEVI BHAGWANDEEN &
SALINA RAMKISSOON
558.4 m²

E 669 056
N1124 760
Nap. Dat. ± 2.5



Approved
[Signature]
Director of Surveys 2008.8.8

c.f. L & S. Bks. (i) 390 fol. 27
(ii) 818 fol. 179
(iii) 798 fol. 282

SCALE : 1 / 500

Note: To obtain compass bearings subtract 5 minutes.

Distances are in metres

PLAN of a Parcel of land coloured pink in the Ward of Siparia
Containing five hundred and fifty one point nine square metres
Surveyed by me with due authority in May 2008
In accordance with Reg 25(1) of the Land Surveyors' Regulations 1998 ,
I certify that this plan is correct.

Checked by *[Signature]* *[Signature]*

Entered..... Trinidad & Tobago Land Surveyor *[Signature]* 2008